

FOR LEASE 45,399 RSF

LEE VISTA BUSINESS CENTER - BUILDING E

7415 Emerald Dunes Drive
Orlando, FL 32822



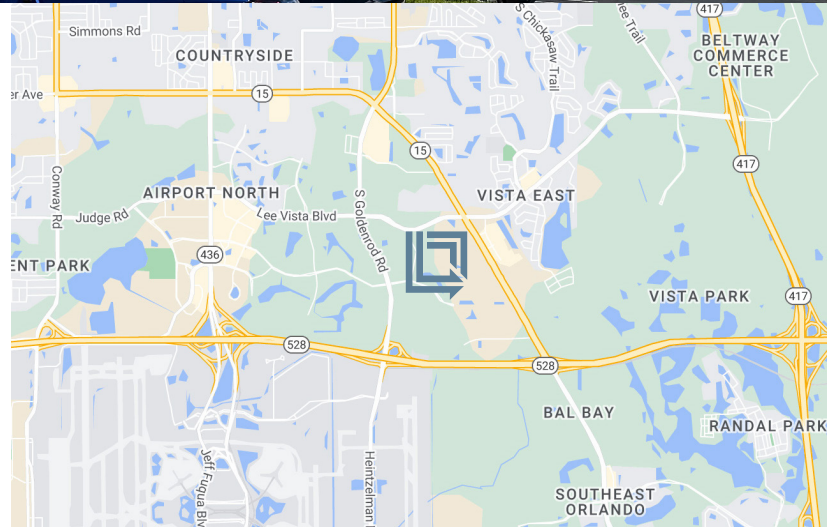
LBA Logistics

AVAILABLE NOW



REAR-LOAD DISTRIBUTION FACILITY

LeeVista Business Center is a 7.70 acre park which is located on the Beachline Expressway directly across from the Orlando International Airport and located off Lee Vista Boulevard between South Goldenrod Road and Narcoossee Road. Building E is 231,452 square feet, 30' Clear Height, and 180' Building Depth.



For Leasing Information Contact:

Tim Perry, CCIM, SIOR

Senior Vice President
321-278-0233
tperry@lee-associates.com

Bo Bradford, CCIM, SIOR

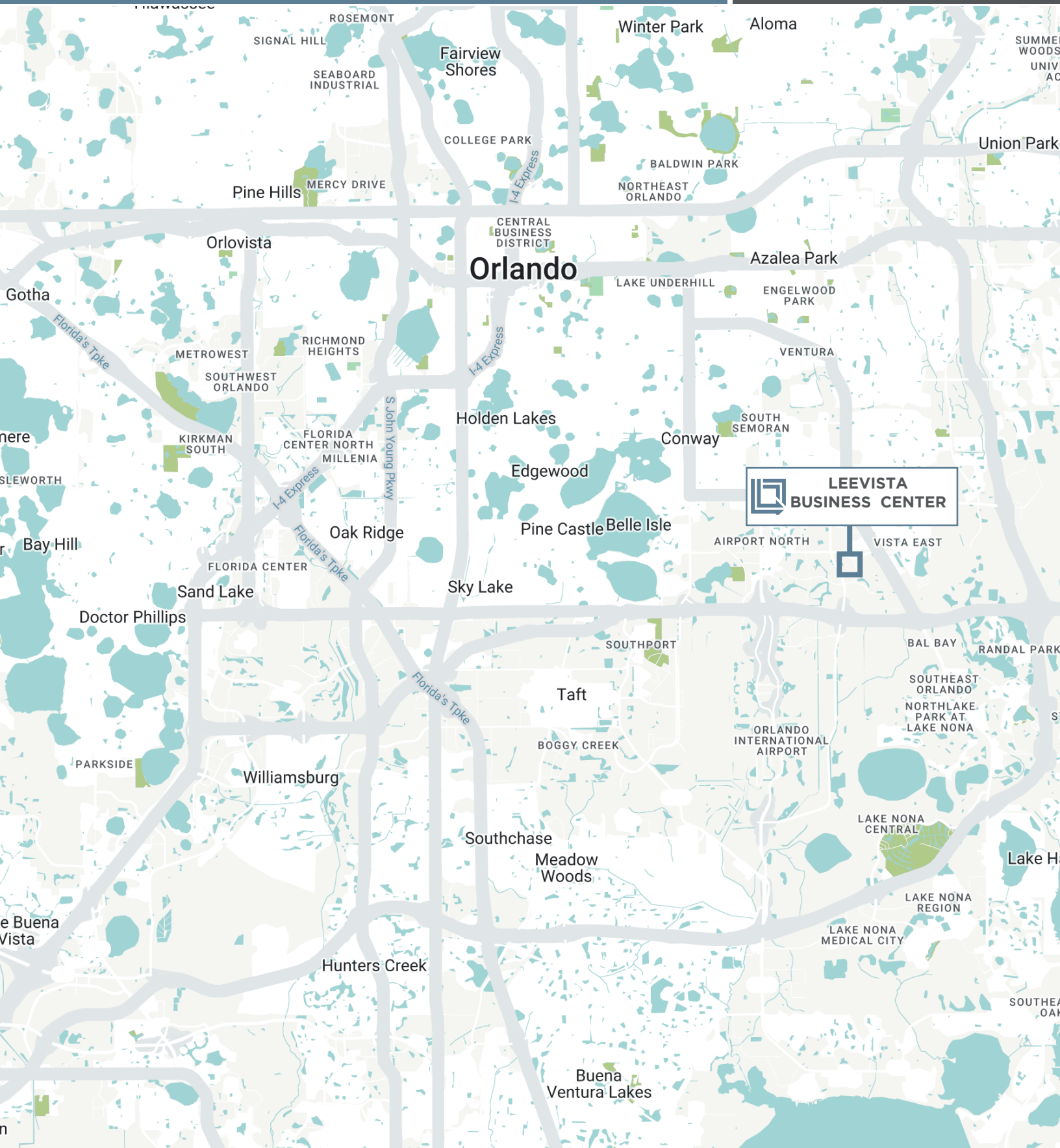
President
321-281-8502
bbradford@lee-associates.com

LEE VISTA BUSINESS CENTER BUILDING E

7415 Emerald Dunes Drive, Orlando, FL 32822



LBA Logistics

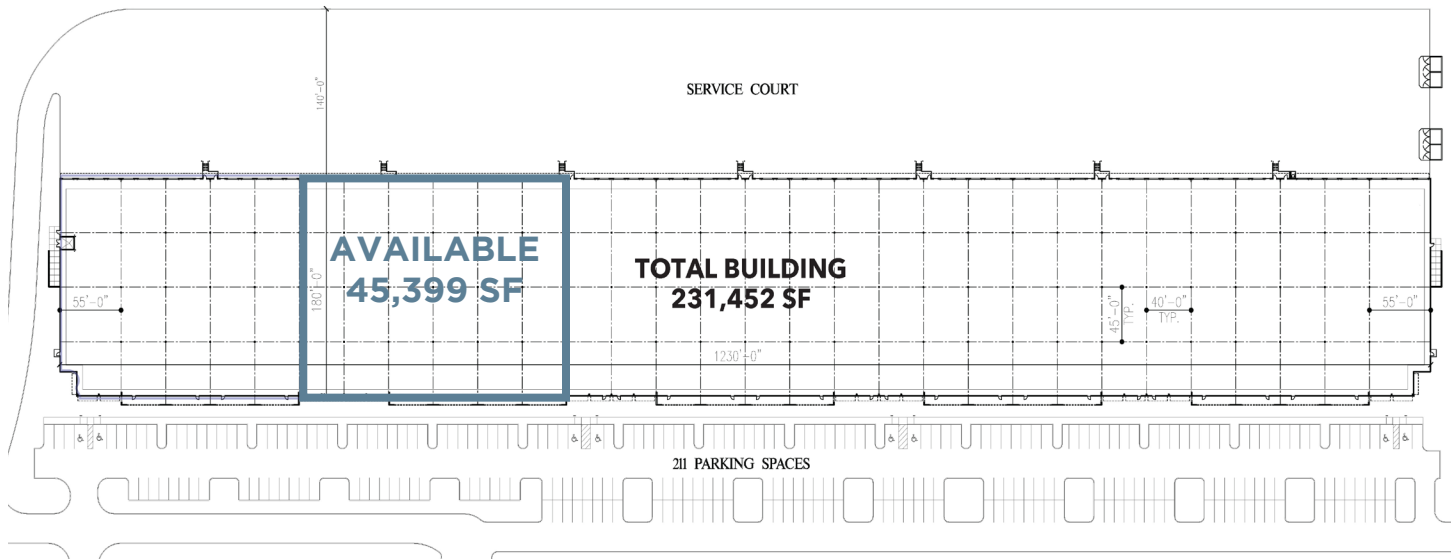


LEE VISTA BUSINESS CENTER BUILDING E

7415 Emerald Dunes Drive, Orlando, FL 32822



LBA Logistics



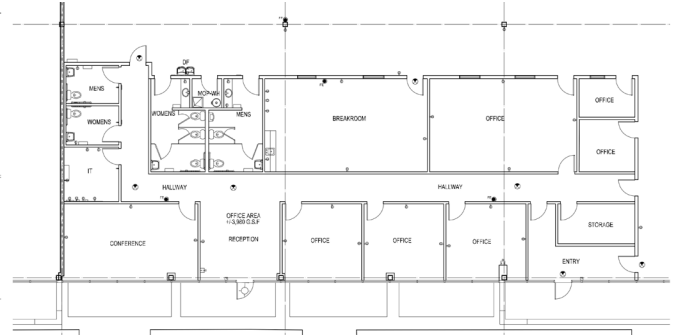
Property Summary

Building Size:	231,452 Square Feet
Building Depth:	180'
Ceiling Height:	30'
Column Spacing:	40'W x 45'D
Truck Court:	140' including a 60' concrete apron
Sprinkler:	ESFR System with Pump
Construction:	Architectural Tilt-Up Concrete with Tinted Glass and Aluminum Storefronts
Car Parking:	211 Spaces
Electrical Service:	3 phase, 480 volt, 2,000 amp Upon Tenant Verification

Listing Summary

Total Size Available:	45,399 SF
Office Size:	4,192 SF
Doors:	15 Dock High Doors with Pit Levelers and Four (4) HVLS fans
Onsite Trailer Storage:	Up to 17 positions available
Lease Rate:	\$11.95/SF NNN
Op Ex:	\$3.37/SF

7415 Emerald Dunes Drive, Orlando, FL 32822

[illegible]

FOR LEASE 40,165 RSF

LEE VISTA BUSINESS CENTER - BUILDING F

7433 Emerald Dunes Drive
Orlando, FL 32822



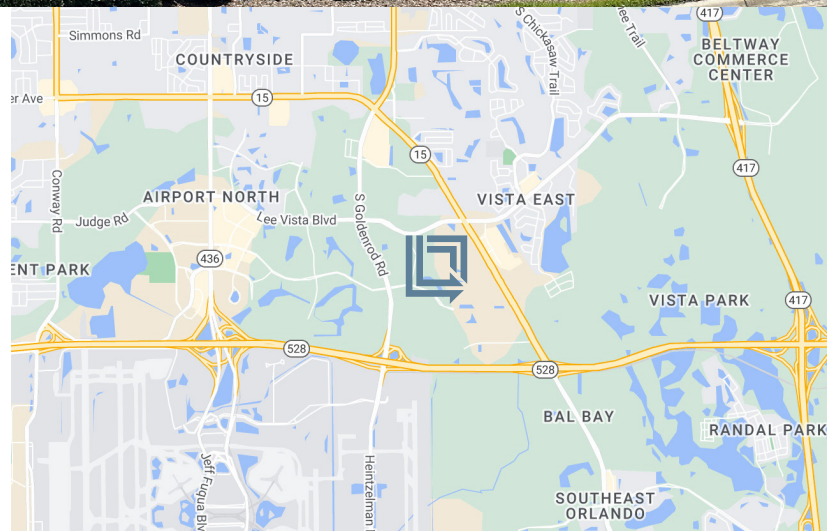
LBA Logistics

AVAILABLE NOW



REAR-LOAD DISTRIBUTION FACILITY

LeeVista Business Center is a 7.70 acre park which is located on the Beachline Expressway directly across from the Orlando International Airport and located off Lee Vista Boulevard between South Goldenrod Road and Narcoosee Road. Building F is 148,681 square feet, 30' Clear Height, and 160' Building Depth.



For Leasing Information Contact:

Tim Perry, CCIM, SIOR

Senior Vice President
321-278-0233
tperry@lee-associates.com

Bo Bradford, CCIM, SIOR

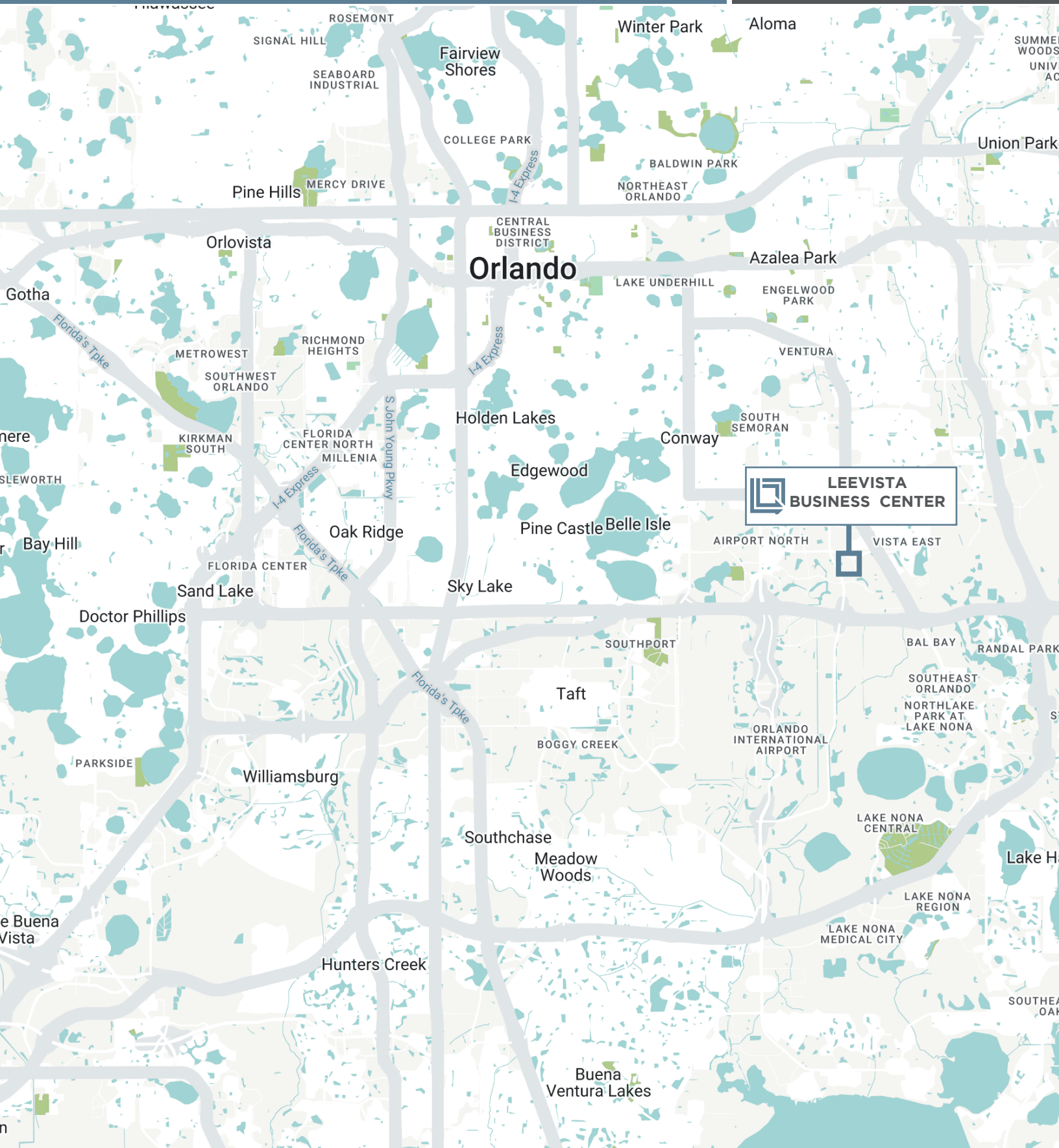
President
321-281-8502
bbradford@lee-associates.com

LEE VISTA BUSINESS CENTER BUILDING F

7433 Emerald Dunes Drive, Orlando, FL 32822



LBA Logistics

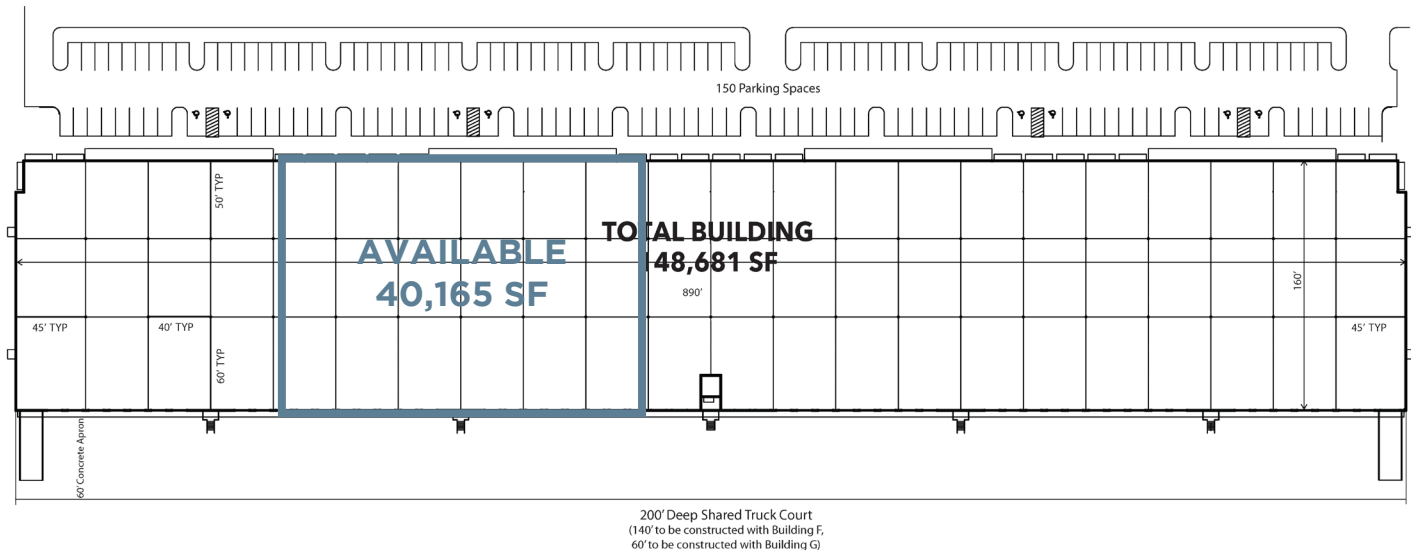


LEE VISTA BUSINESS CENTER BUILDING F

7433 Emerald Dunes Drive, Orlando, FL 32822



LBA Logistics



Property Summary

Building Size:	148,681 Square Feet
Building Depth:	160'
Ceiling Height:	30'
Column Spacing:	40'W x 50'D
Truck Court:	200' including a 60' concrete apron
Sprinkler:	ESFR System with Pump
Construction:	Architectural Tilt-Up Concrete with Tinted Glass and Aluminum Storefronts
Car Parking:	150 Spaces
Electrical Service:	3 phase 277/480 volts Upon Tenant Verification

Listing Summary

Total Size Available:	40,165 SF
Office Size:	2,912 SF
Doors:	15 Dock High Doors and 1 Ramp to Grade Level Five (5) Edge of Docks (EODs)
Onsite Trailer Storage:	Up to 17 positions available
Lease Rate:	\$11.95/SF NNN
Op Ex:	\$3.42/SF

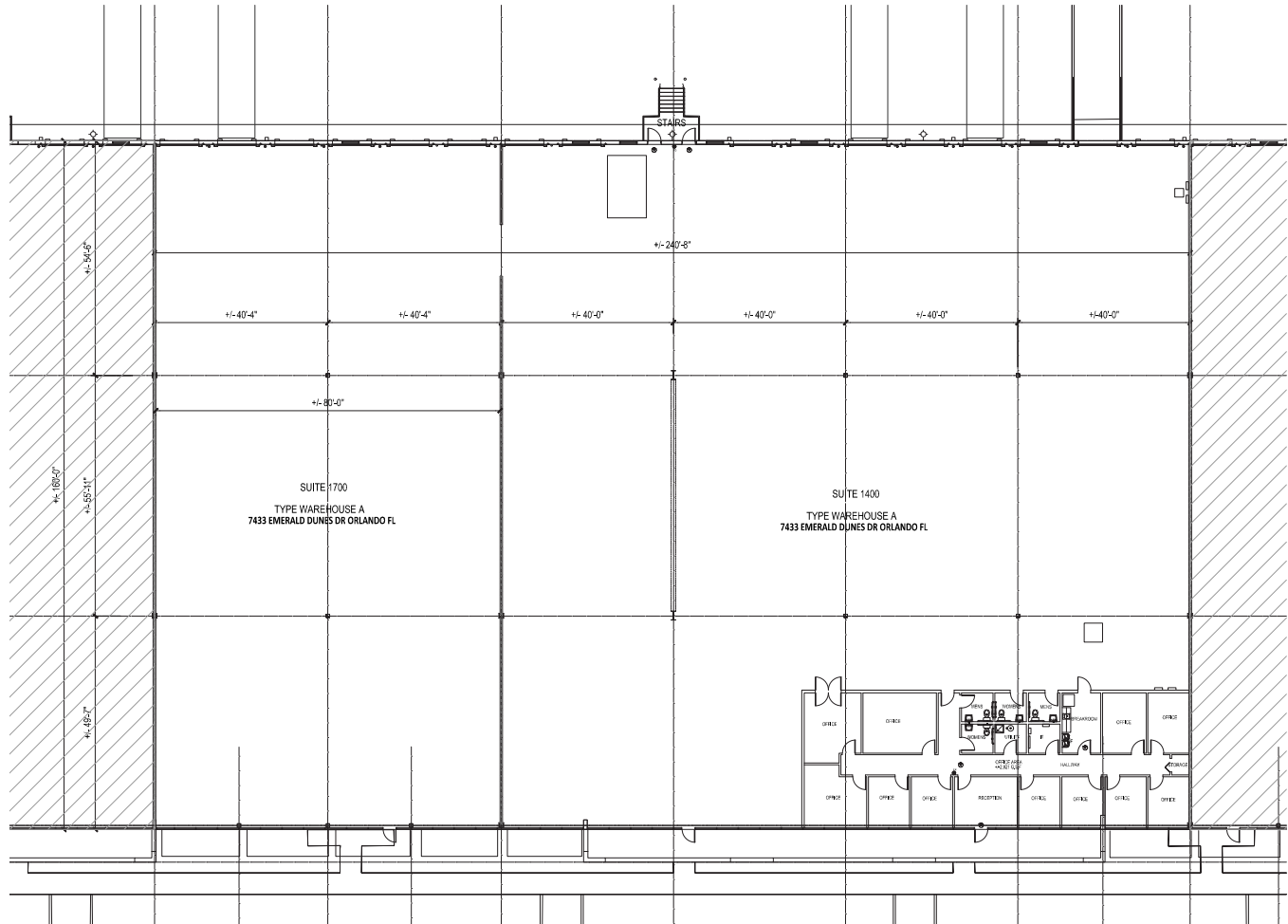
LEE VISTA BUSINESS CENTER BUILDING F

7433 Emerald Dunes Drive, Orlando, FL 32822



LBA Logistics

SUITE 1400



FOR LEASE 33,476 RSF

LEE VISTA BUSINESS CENTER - BUILDING D

7443 Emerald Dunes Drive
Orlando, FL 32822



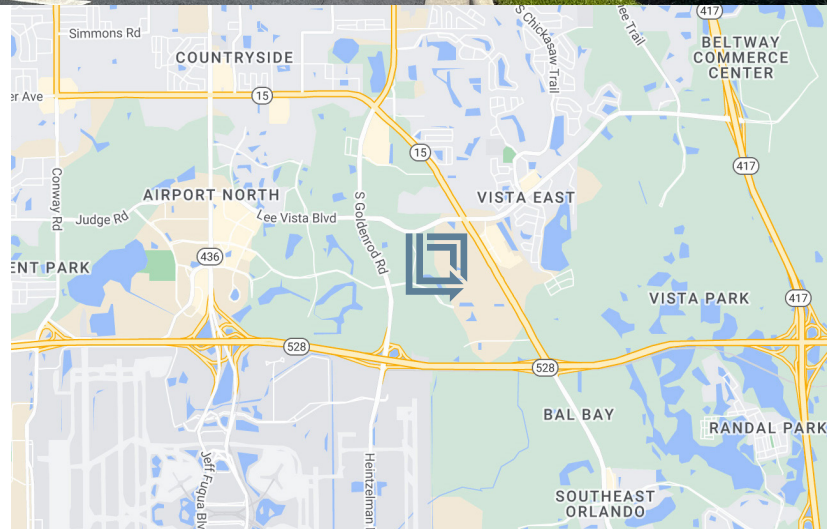
LBA Logistics

AVAILABLE NOW



REAR-LOAD DISTRIBUTION FACILITY

LeeVista Business Center is a 7.70 acre park which is located on the Beachline Expressway directly across from the Orlando International Airport and located off Lee Vista Boulevard between South Goldenrod Road and Narcoossee Road. Building D is 109,062 square feet, 24' Clear Height, and 160' Building Depth.



For Leasing Information Contact:

Tim Perry, CCIM, SIOR

Senior Vice President
321-278-0233
tperry@lee-associates.com

Bo Bradford, CCIM, SIOR

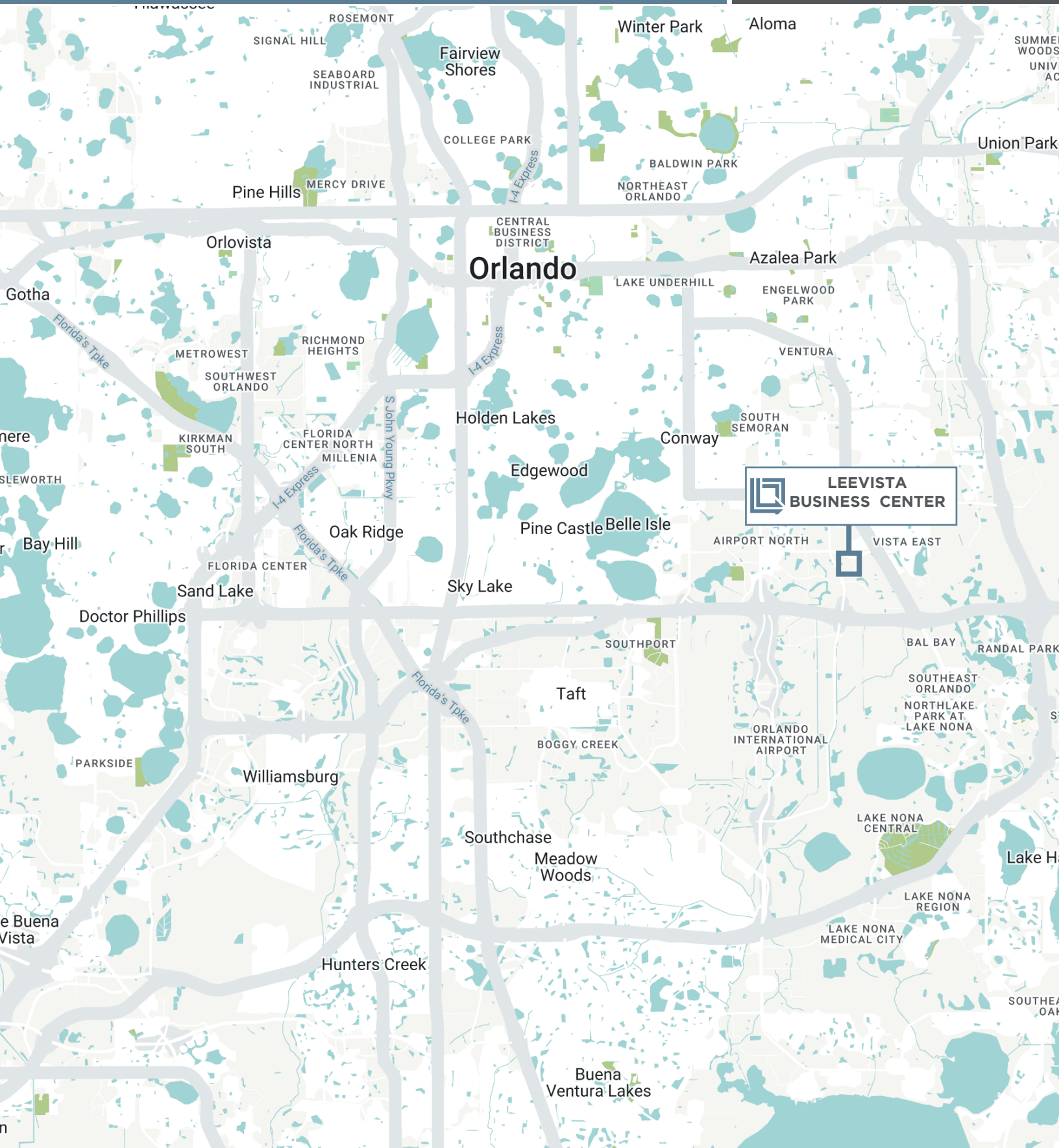
President
321-281-8502
bbradford@lee-associates.com

LEE VISTA BUSINESS CENTER BUILDING D

7443 Emerald Dunes Drive, Orlando, FL 32822



LBA Logistics

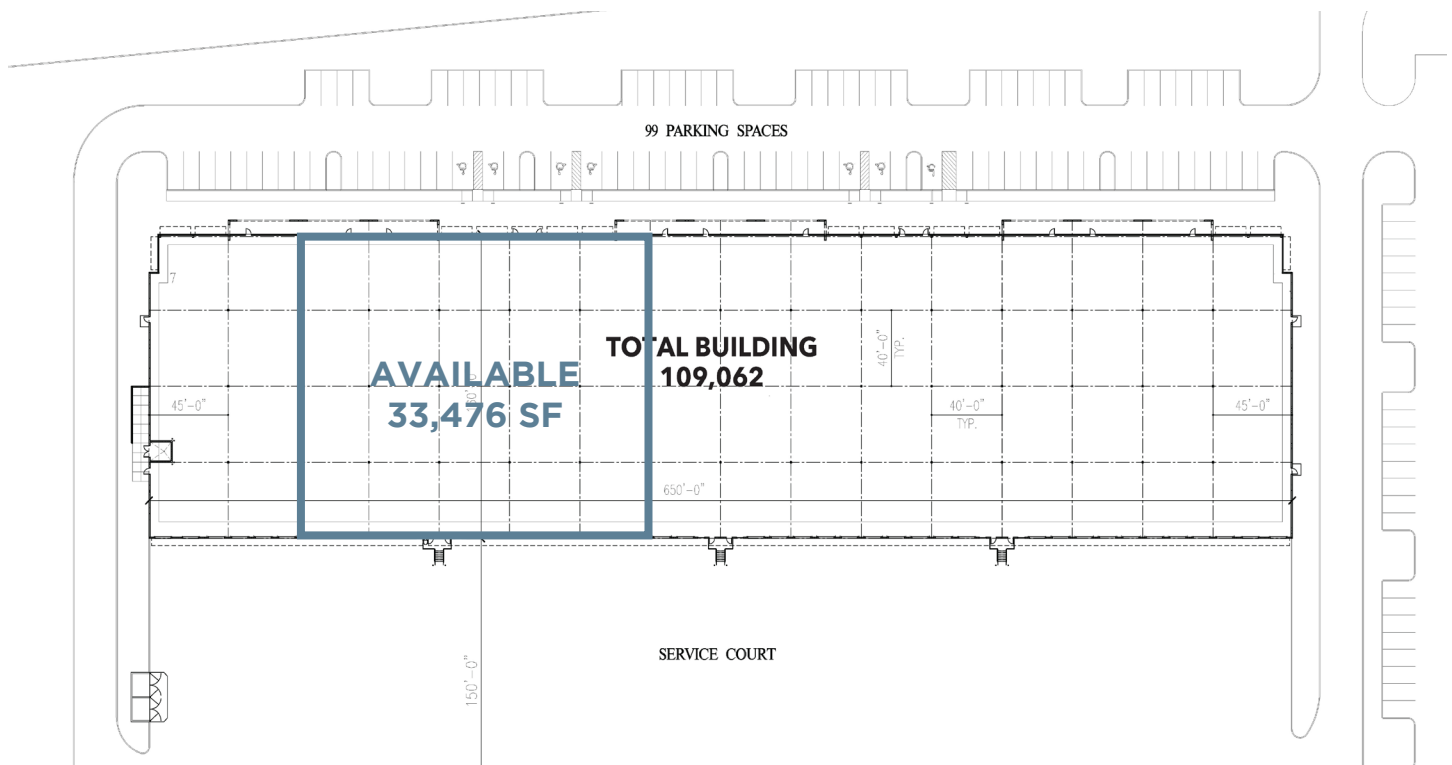


LEE VISTA BUSINESS CENTER BUILDING D

7443 Emerald Dunes Drive, Orlando, FL 32822



LBA Logistics



Property Summary

Building Size:	109,062 Square Feet
Building Depth:	160'
Ceiling Height:	24'
Column Spacing:	40'W x 40'D
Truck Court:	150' including a 60' concrete apron
Sprinkler:	ESFR System with Pump
Construction:	Architectural Tilt-Up Concrete with Tinted Glass and Aluminum Storefronts
Car Parking:	99 Spaces
Electrical Service:	3 phase, 480 volt, 2,000 amp Upon Tenant Verification

Listing Summary

Total Size Available:	33,476 SF
Office Size:	1,885 SF
Doors:	11 Dock High Doors 1 Oversized Door (20' x 12') with Ramp to Grade 2 Pit Levelers
Onsite Trailer Storage:	Up to 17 positions available
Lease Rate:	\$11.95/SF NNN
Op Ex:	\$3.52/SF

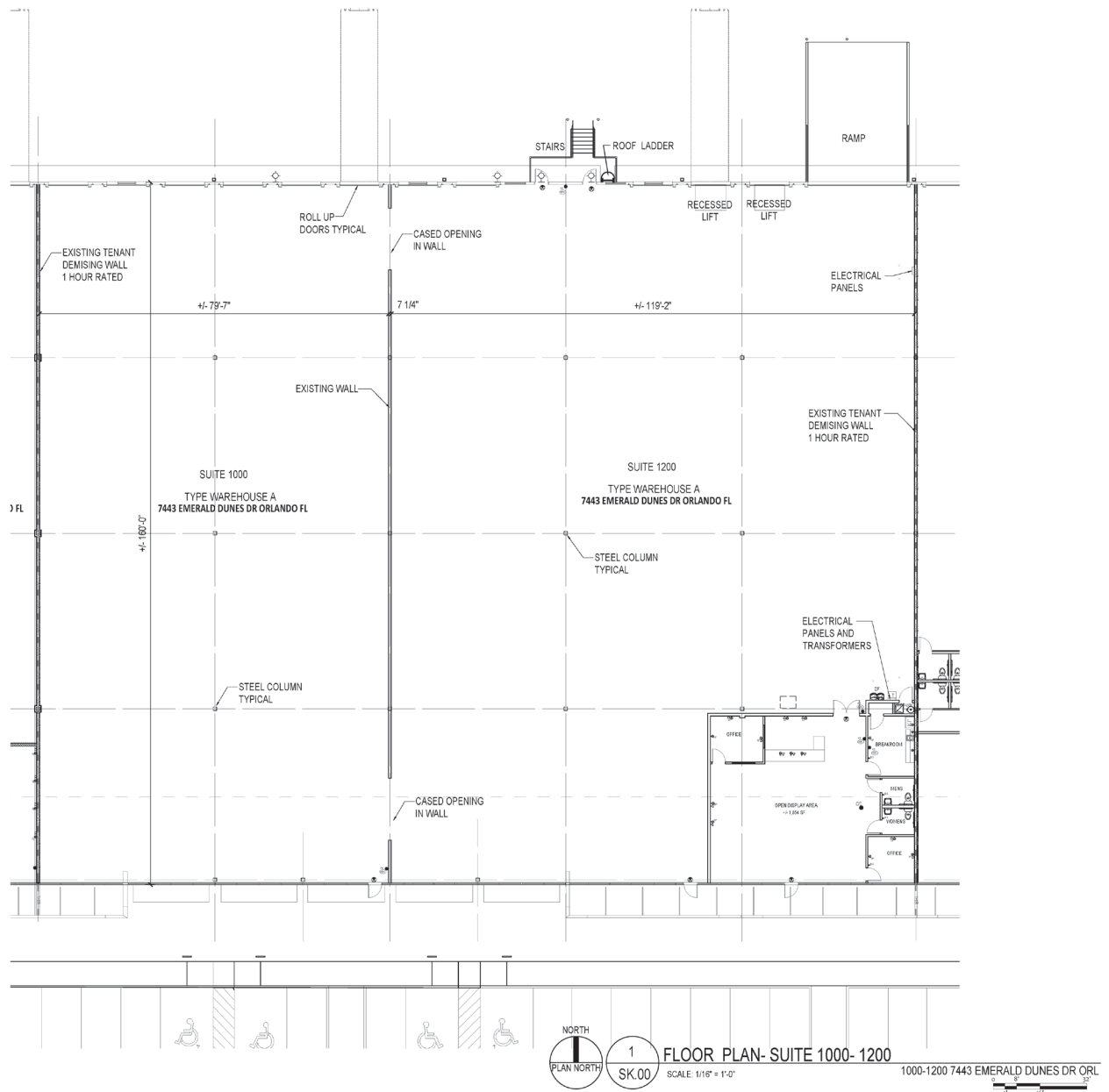
LEE VISTA BUSINESS CENTER BUILDING D

7443 Emerald Dunes Drive, Orlando, FL 32822



LBA Logistics

SUITE 1200



FOR LEASE 20,021 RSF

LEE VISTA BUSINESS CENTER - BUILDING G

7455 Emerald Dunes Drive
Orlando, FL 32822

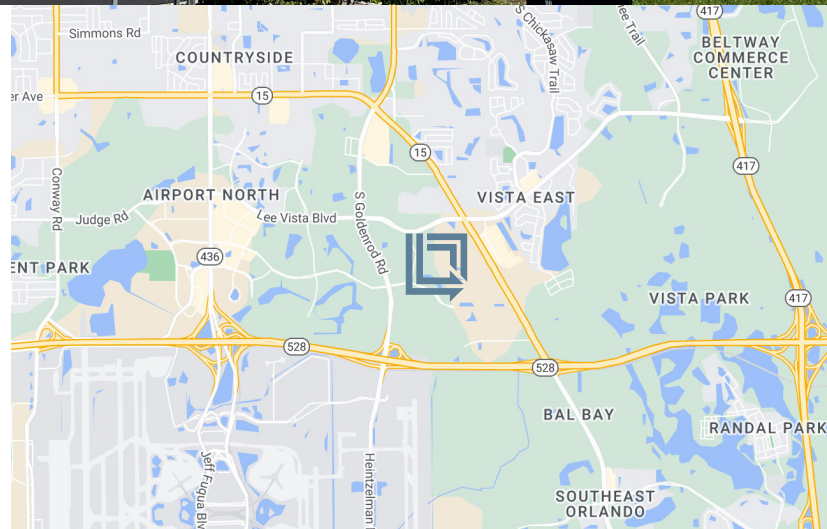


LBA Logistics



REAR-LOAD DISTRIBUTION FACILITY

LeeVista Business Center is a 7.70 acre park which is located on the Beachline Expressway directly across from the Orlando International Airport and located off Lee Vista Boulevard between South Goldenrod Road and Narcoossee Road. Building G is 163,774 square feet, 30' Clear Height, and 160' Building Depth.



For Leasing Information Contact:

Tim Perry, CCIM, SIOR

Senior Vice President
321-278-0233
tperry@lee-associates.com

Bo Bradford, CCIM, SIOR

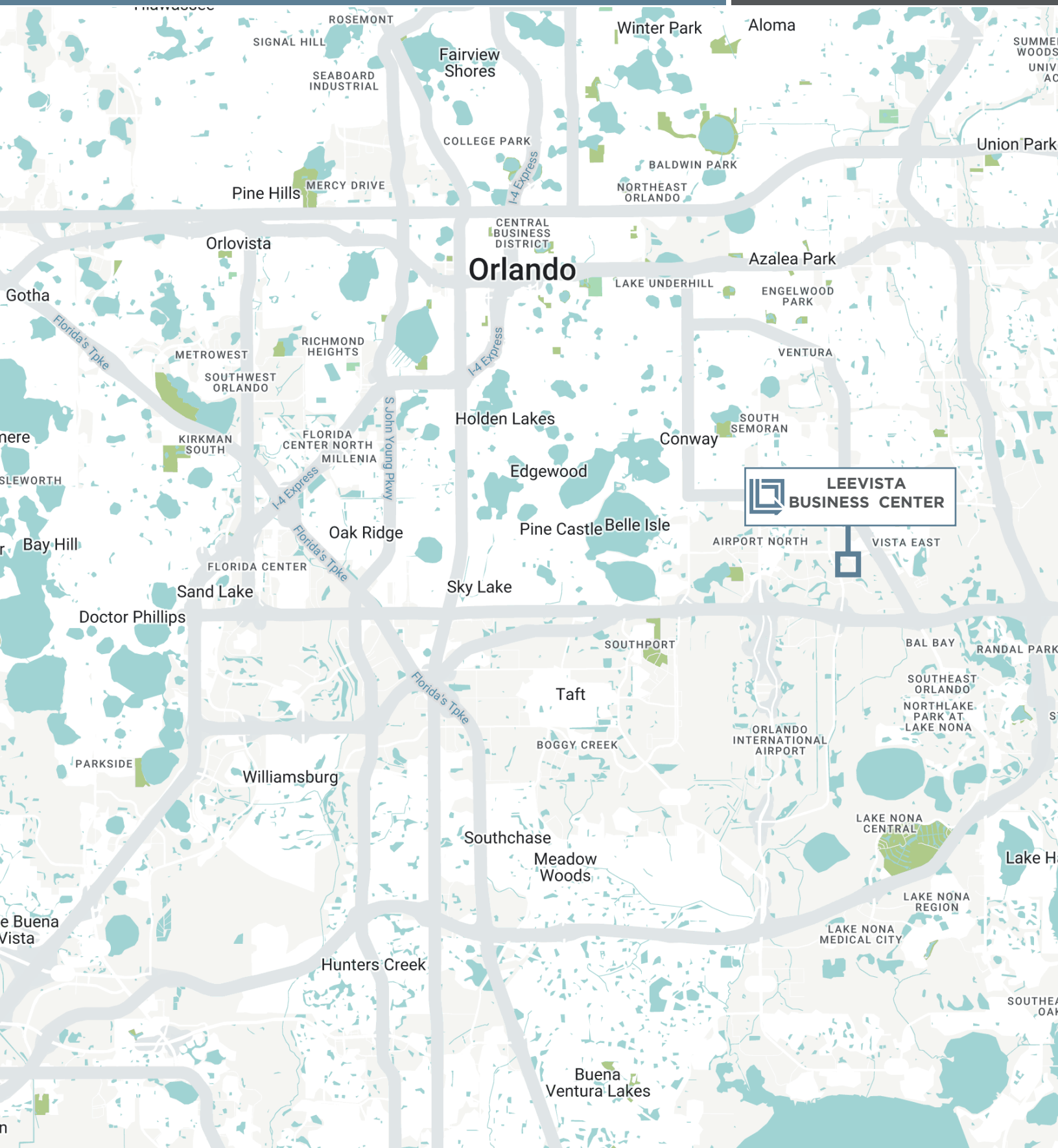
President
321-281-8502
bbradford@lee-associates.com

LEE VISTA BUSINESS CENTER BUILDING G

7455 Emerald Dunes Drive, Orlando, FL 32822



LBA Logistics

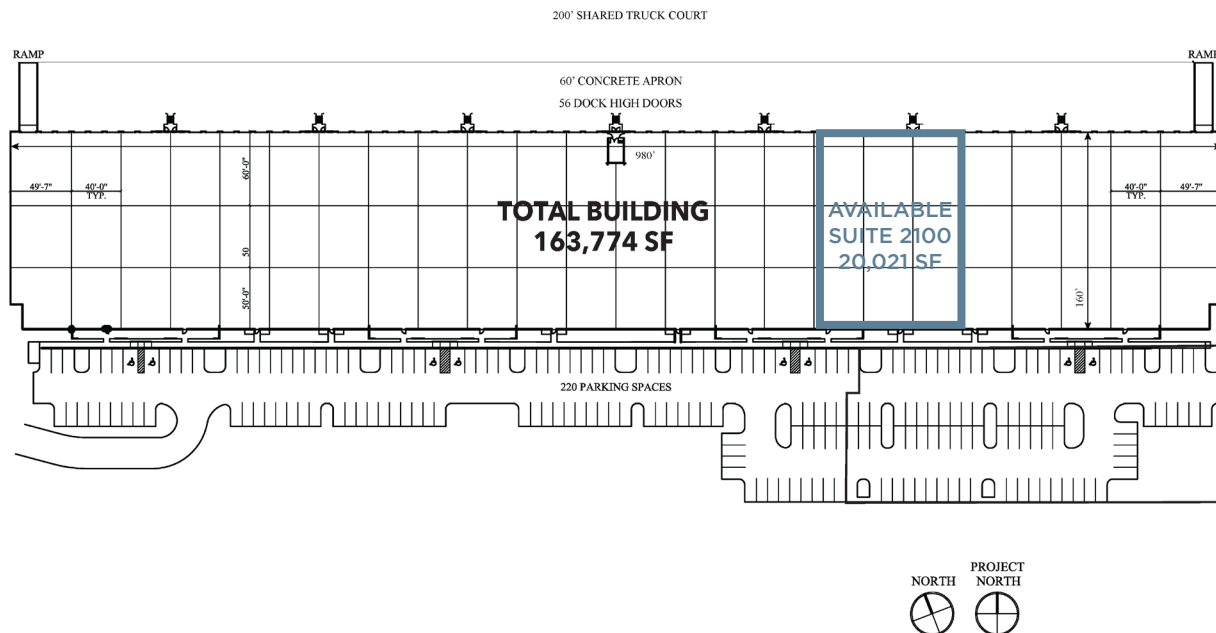


LEE VISTA BUSINESS CENTER BUILDING G

7455 Emerald Dunes Drive, Orlando, FL 32822



LBA Logistics



Property Summary

Building Size:	163,774 Square Feet
Building Depth:	160'
Ceiling Height:	30'
Column Spacing:	40'W x 50'D
Truck Court:	200' including a 60' concrete apron
Sprinkler:	ESFR System with Pump
Construction:	Architectural Tilt-Up Concrete with Tinted Glass and Aluminum Storefronts
Car Parking:	220 Spaces
Electrical Service:	3 phase 277/480 volts Upon Tenant Verification

Listing Summary

Available:	Suite 2100 20,021 SF
Office Size:	3,279 SF
Doors:	Seven (7) Dock High Doors
Onsite Trailer Storage:	Up to 17 positions available
Lease Rate:	\$13.50/SF NNN
Op Ex:	\$3.17/SF

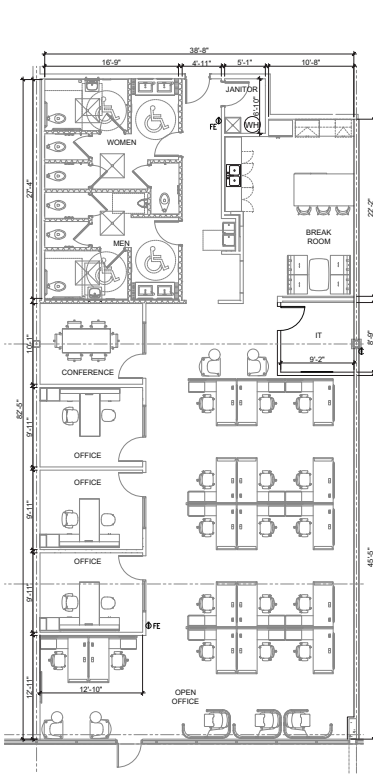
LEE VISTA BUSINESS CENTER BUILDING G

7455 Emerald Dunes Drive, Orlando, FL 32822

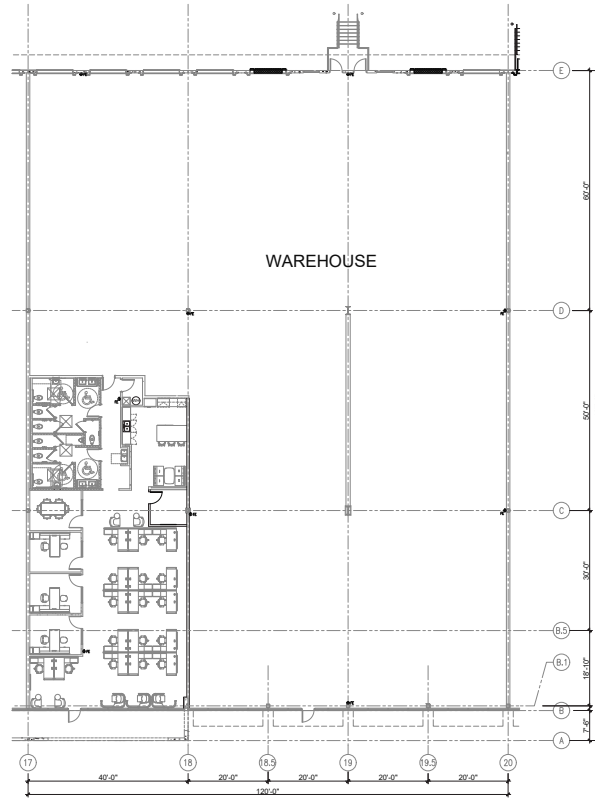


LBA Logistics

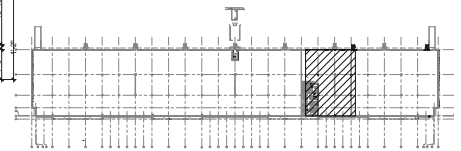
SUITE 2100



OFFICE FLOOR PLAN



OVERALL SUITE



KEY PLAN