

# FOR LEASE 22,398 RSF

## LEE VISTA BUSINESS CENTER - BUILDING E

7415 Emerald Dunes Drive  
Orlando, FL 32822



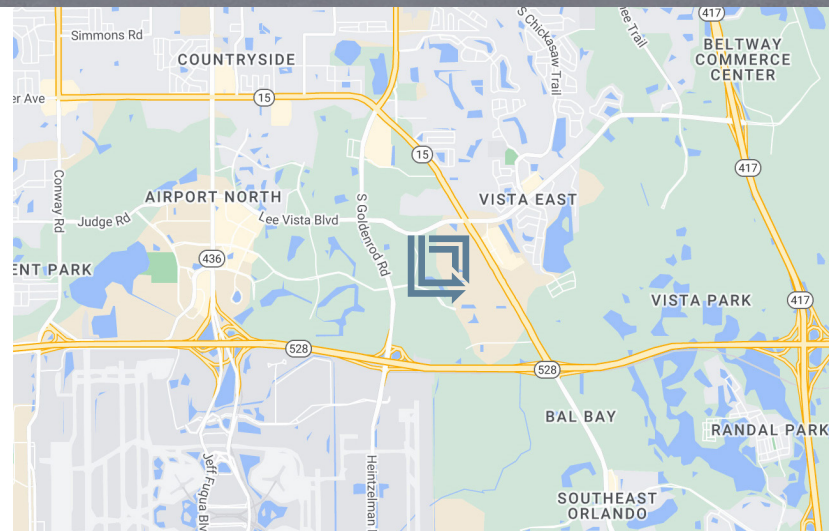
LBA Logistics

**AVAILABLE NOW**



### REAR-LOAD DISTRIBUTION FACILITY

LeeVista Business Center is a 7.70 acre park which is located on the Beachline Expressway directly across from the Orlando International Airport and located off Lee Vista Boulevard between South Goldenrod Road and Narcoosee Road. Building E is 231,452 square feet, 30' Clear Height, and 180' Building Depth.



#### For Leasing Information Contact:

**Tim Perry, CCIM, SIOR**

Senior Vice President  
321-278-0233  
tperry@lee-associates.com

**Ryan Griffith**

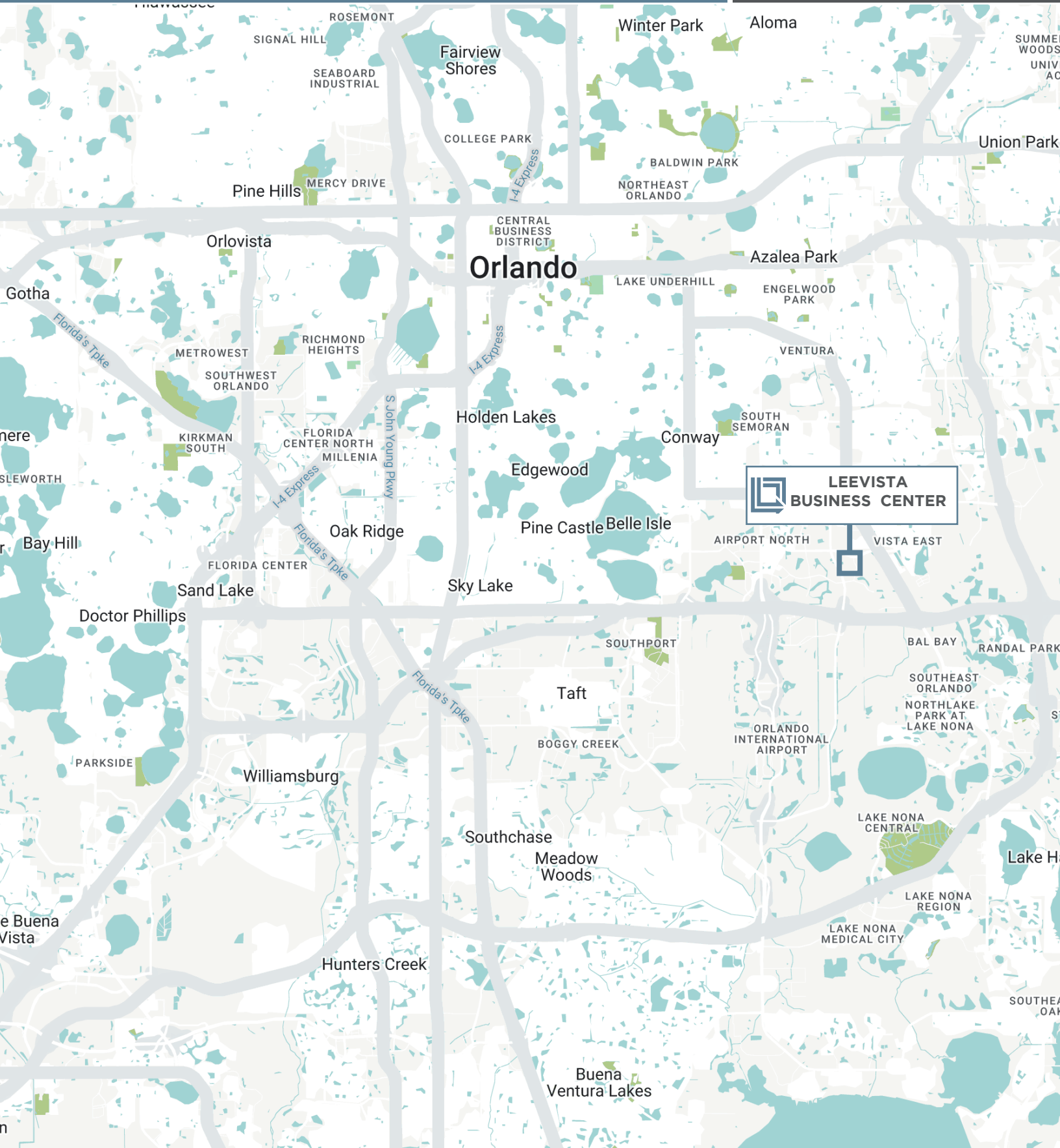
Senior Vice President/Principal  
321-281-8512  
rgriffith@lee-associates.com

# LEE VISTA BUSINESS CENTER BUILDING E

7415 Emerald Dunes Drive, Orlando, FL 32822



LBA Logistics

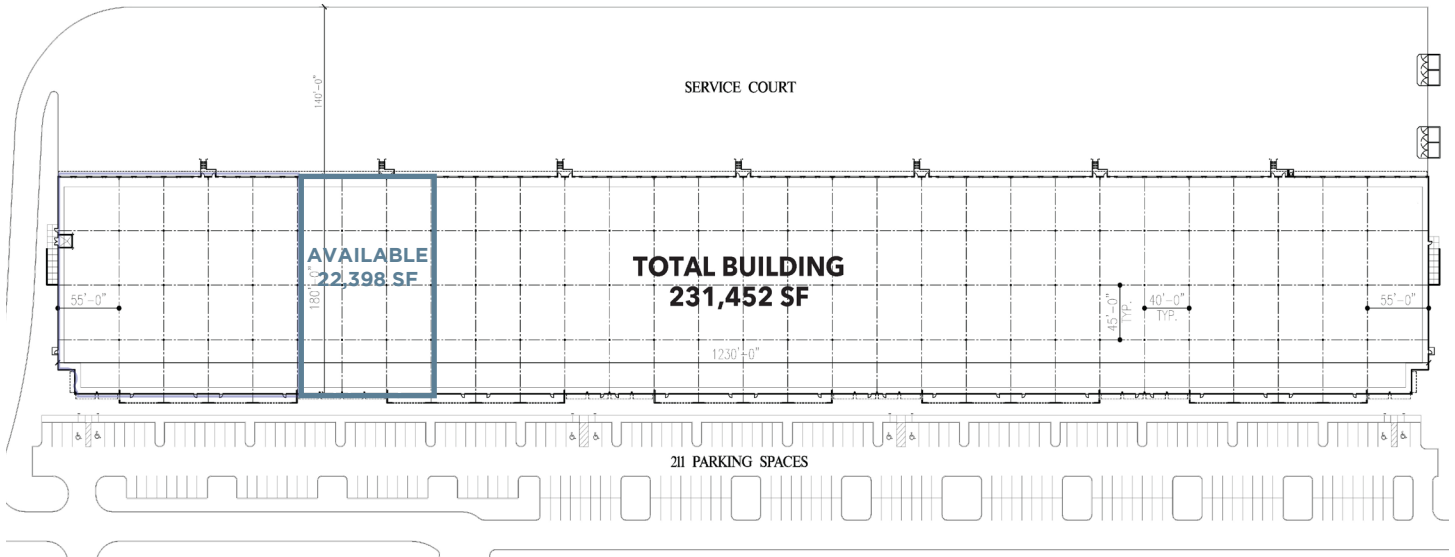


# LEE VISTA BUSINESS CENTER BUILDING E

7415 Emerald Dunes Drive, Orlando, FL 32822



LBA Logistics



## Property Summary

<b>Building Size:</b>	231,452 Square Feet
<b>Building Depth:</b>	180'
<b>Ceiling Height:</b>	30'
<b>Column Spacing:</b>	40'W x 45'D
<b>Truck Court:</b>	140' including a 60' concrete apron
<b>Sprinkler:</b>	ESFR System with Pump
<b>Construction:</b>	Architectural Tilt-Up Concrete with Tinted Glass and Aluminum Storefronts
<b>Car Parking:</b>	211 Spaces
<b>Electrical Service:</b>	3 phase, 480 volt, 800 amps

## Listing Summary

<b>Total Size Available:</b>	22,398 SF
<b>Office Size:</b>	4,136 SF
<b>Doors:</b>	7 Dock High Doors with Pit Levelers and One (1) HVLS fan
<b>Lease Rate:</b>	\$13.25/SF NNN
<b>Op Ex:</b>	\$5.07/SF

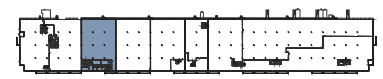
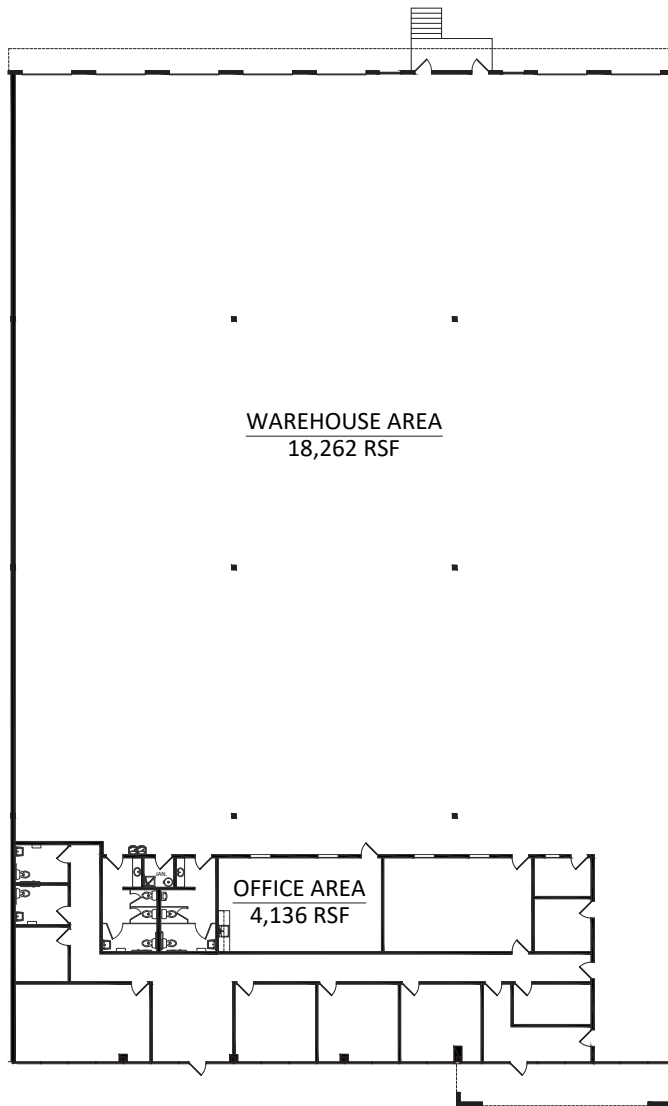
# LEE VISTA BUSINESS CENTER BUILDING E

7415 Emerald Dunes Drive, Orlando, FL 32822



LBA Logistics

## SUITE 600



FLOOR LOCATION PLAN



# FOR LEASE 120,894 RSF

## LEE VISTA BUSINESS CENTER - BUILDING F

7433 Emerald Dunes Drive  
Orlando, FL 32822



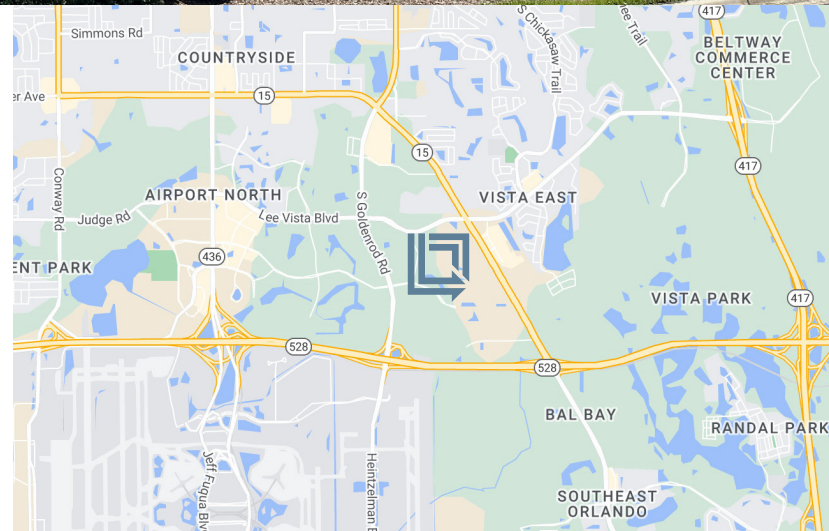
LBA Logistics

AVAILABLE NOW



### REAR-LOAD DISTRIBUTION FACILITY

LeeVista Business Center is a 7.70 acre park which is located on the Beachline Expressway directly across from the Orlando International Airport and located off Lee Vista Boulevard between South Goldenrod Road and Narcoosee Road. Building F is 148,681 square feet, 30' Clear Height, and 160' Building Depth.



#### For Leasing Information Contact:

**Tim Perry, CCIM, SIOR**  
Senior Vice President  
321-278-0233  
tperry@lee-associates.com

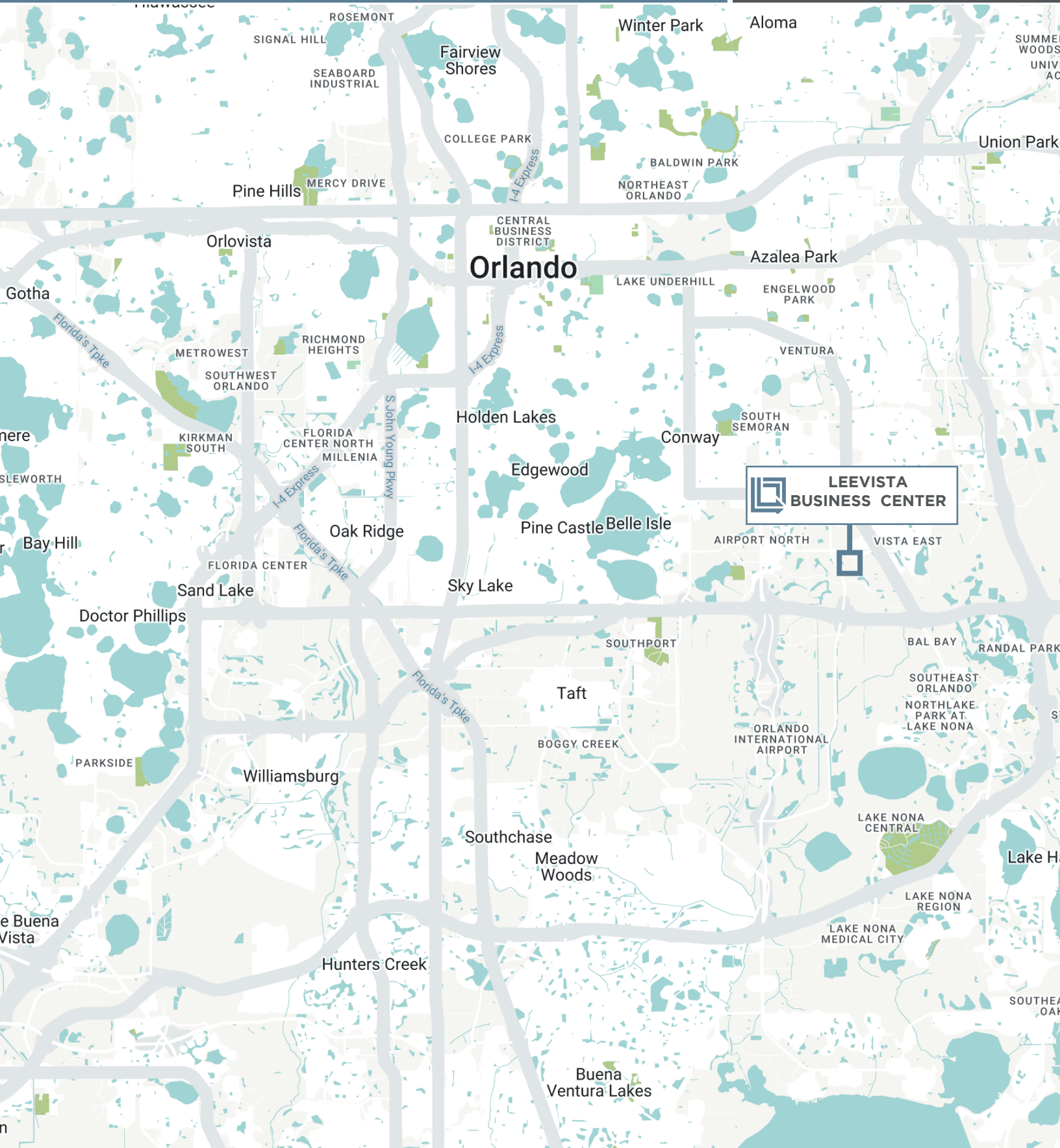
**Ryan Griffith**  
Senior Vice President  
321-281-8512  
rgriffith@lee-associates.com

# LEE VISTA BUSINESS CENTER BUILDING F

7433 Emerald Dunes Drive, Orlando, FL 32822



LBA Logistics

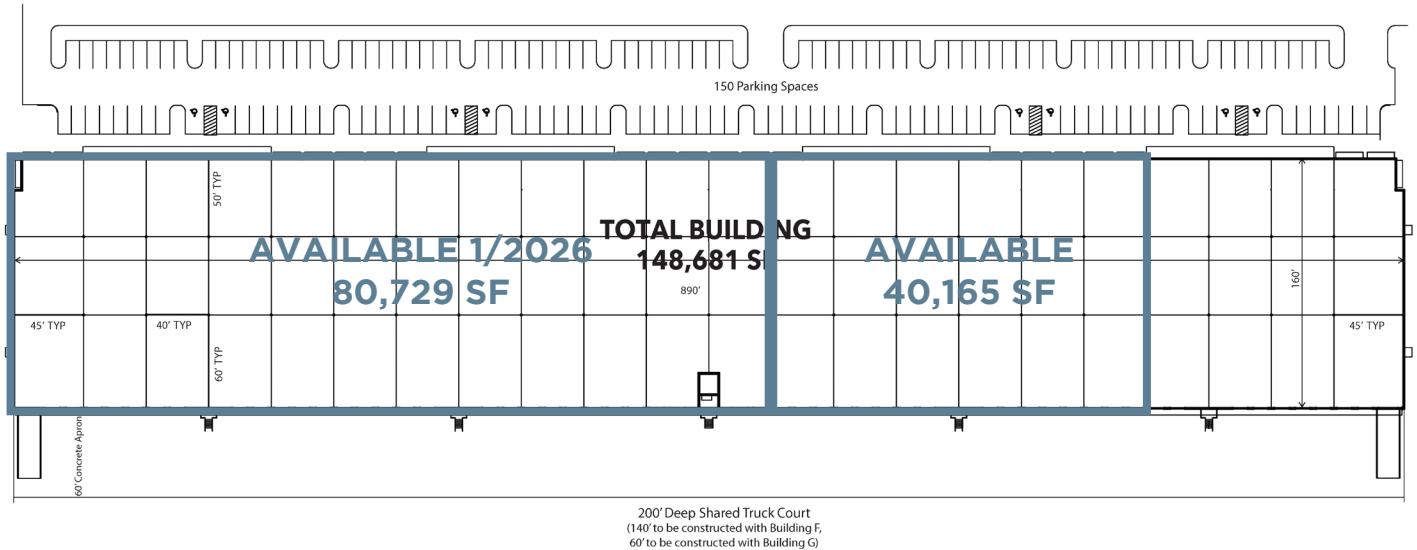


# LEE VISTA BUSINESS CENTER BUILDING F

7433 Emerald Dunes Drive, Orlando, FL 32822



LBA Logistics



## Property Summary

<b>Building Size:</b>	148,681 Square Feet
<b>Building Depth:</b>	160'
<b>Ceiling Height:</b>	30'
<b>Column Spacing:</b>	40'W x 50'D
<b>Truck Court:</b>	200' including a 60' concrete apron
<b>Sprinkler:</b>	ESFR System with Pump
<b>Construction:</b>	Architectural Tilt-Up Concrete with Tinted Glass and Aluminum Storefronts
<b>Car Parking:</b>	150 Spaces
<b>Electrical Service:</b>	3 phase 277/480 volts Upon Tenant Verification

## Listing Summary

<b>Available:</b>	Suite 1400   40,165 SF Suite 200   80,729 SF
<b>Office Size:</b>	Suite 1400   2,912 SF Suite 200   1,457 SF
<b>Doors:</b>	Suite 1400   15 Dock High Doors and 1 Ramp to Grade Level Five (5) Edge of Docks (EODs)  Suite 200   29 Dock High Doors and 1 oversized (12'x14') door with ramp to grade
<b>Lease Rate:</b>	\$10.95 to \$11.95/SF NNN
<b>Op Ex:</b>	\$3.59/SF

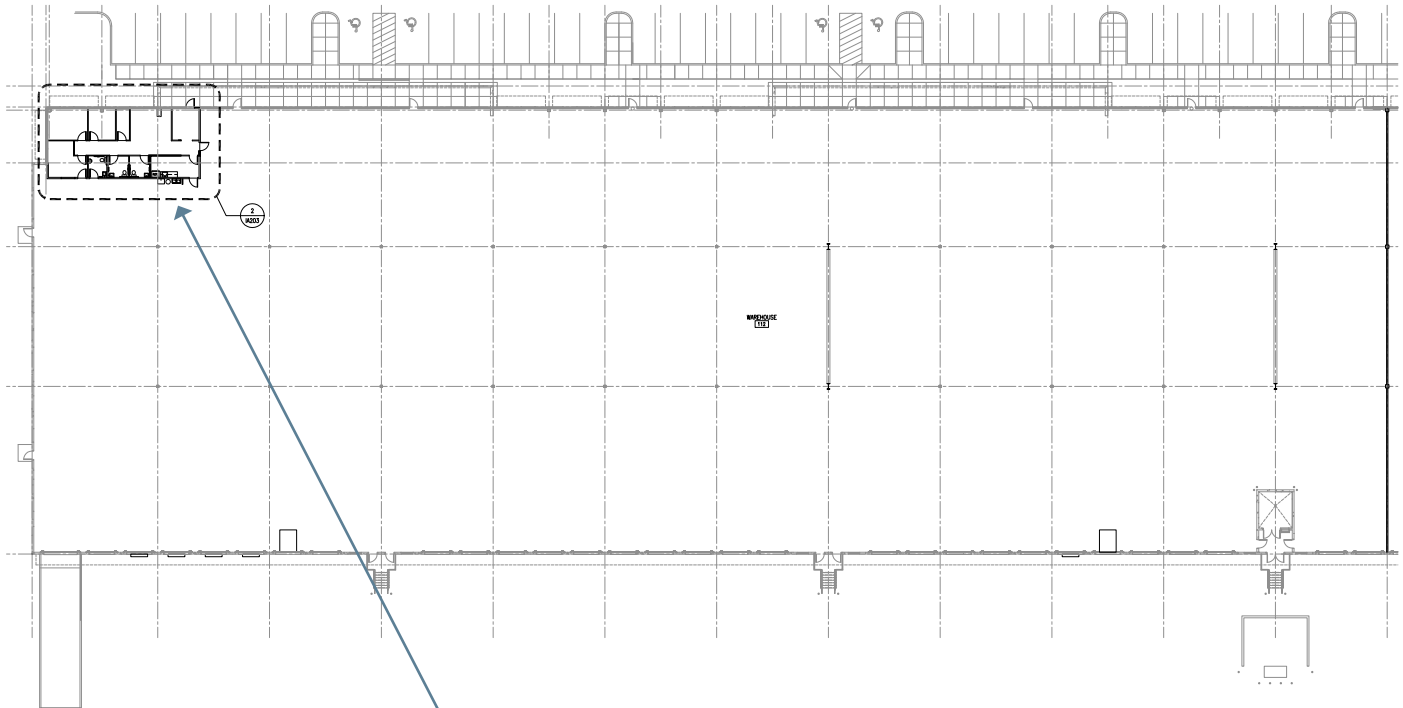
# LEE VISTA BUSINESS CENTER BUILDING F

7433 Emerald Dunes Drive, Orlando, FL 32822

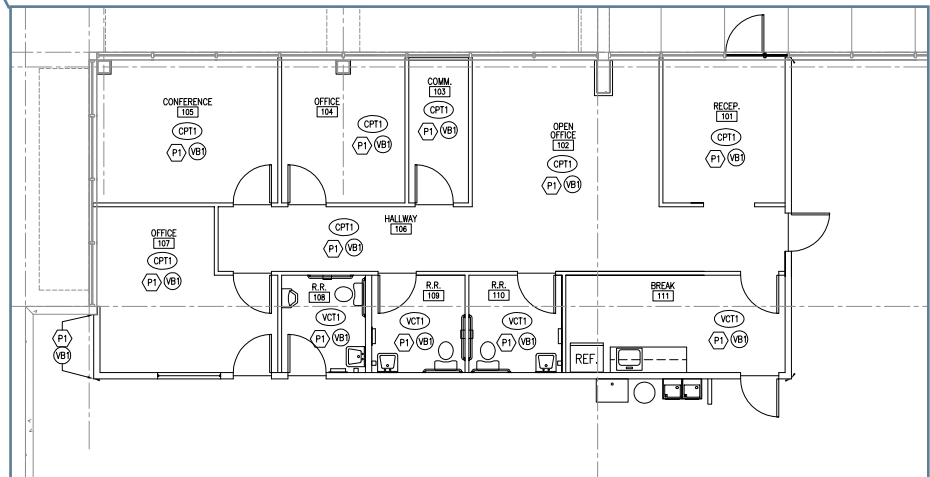


LBA Logistics

## SUITE 200 | 80,729 SF



### Office | 1,457 SF



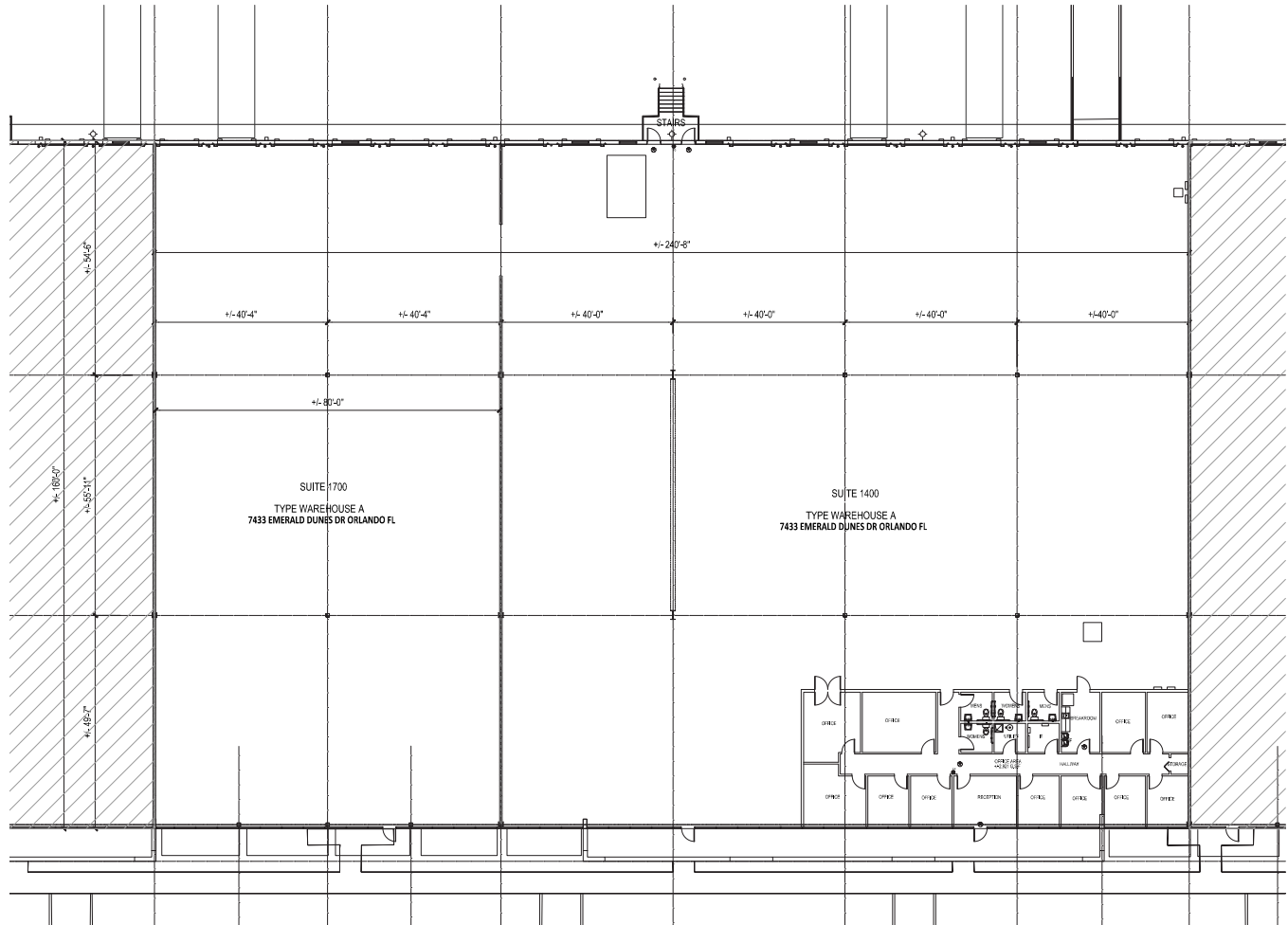
# LEE VISTA BUSINESS CENTER BUILDING F

7433 Emerald Dunes Drive, Orlando, FL 32822



LBA Logistics

## SUITE 1400 | 40,165 SF



# FOR LEASE 6,700 RSF

## LEE VISTA BUSINESS CENTER - BUILDING D

7443 Emerald Dunes Drive  
Orlando, FL 32822



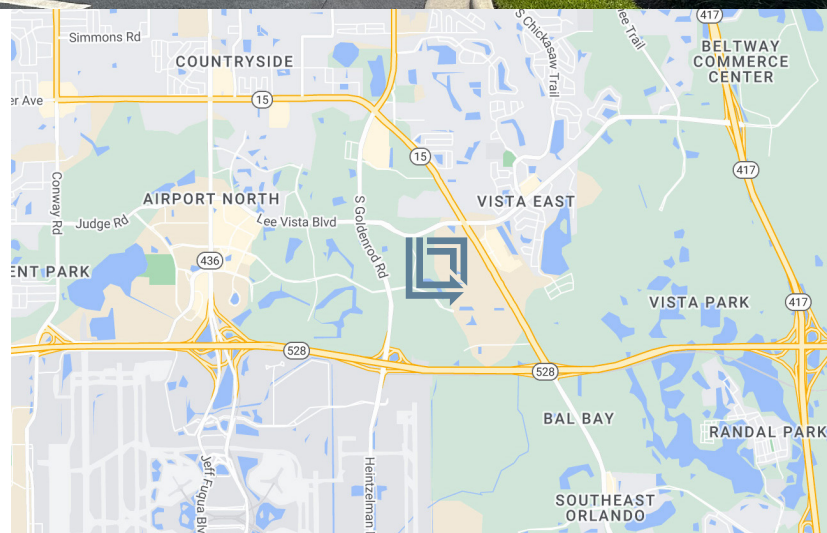
LBA Logistics

**AVAILABLE NOW**



### REAR-LOAD DISTRIBUTION FACILITY

LeeVista Business Center is a 7.70 acre park which is located on the Beachline Expressway directly across from the Orlando International Airport and located off Lee Vista Boulevard between South Goldenrod Road and Narcoosee Road. Building D is 109,062 square feet, 24' Clear Height, and 160' Building Depth.



#### For Leasing Information Contact:

**Tim Perry, CCIM, SIOR**

Senior Vice President  
321-278-0233  
tperry@lee-associates.com

**Ryan Griffith**

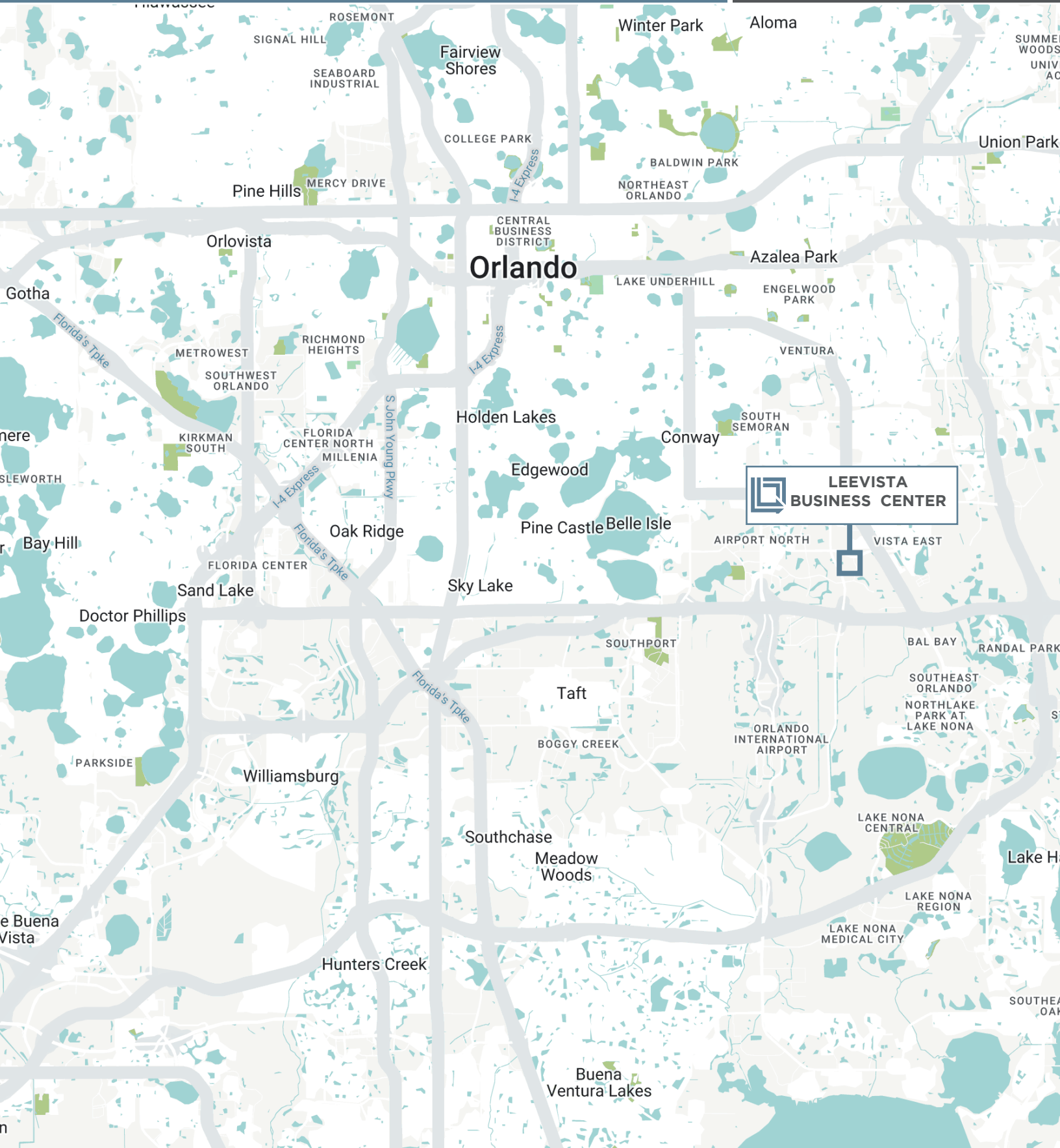
Senior Vice President  
321-281-8512  
rgriffith@lee-associates.com

# LEE VISTA BUSINESS CENTER BUILDING D

7443 Emerald Dunes Drive, Orlando, FL 32822



LBA Logistics

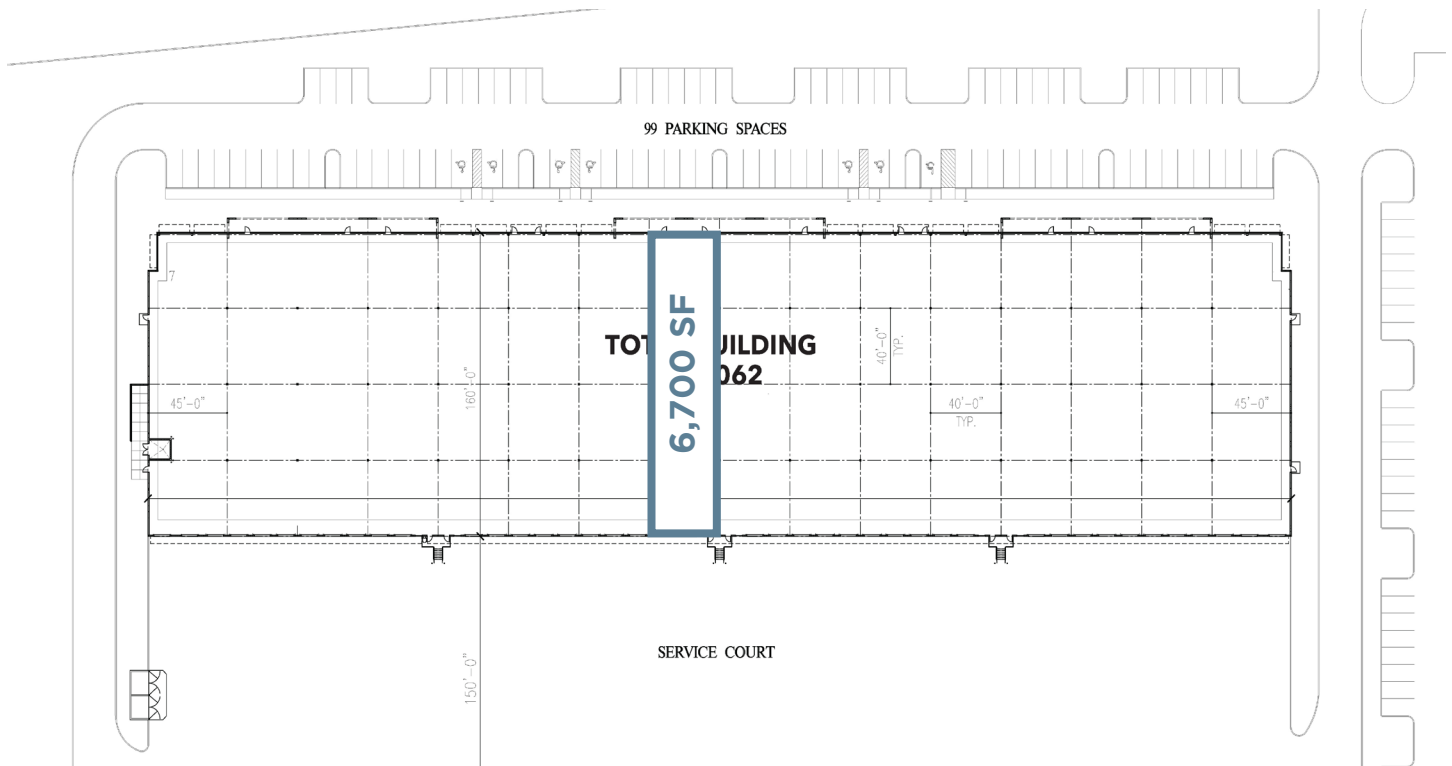


# LEE VISTA BUSINESS CENTER BUILDING D

7443 Emerald Dunes Drive, Orlando, FL 32822



LBA Logistics



## Property Summary

<b>Building Size:</b>	109,062 Square Feet
<b>Building Depth:</b>	160'
<b>Ceiling Height:</b>	24'
<b>Column Spacing:</b>	40'W x 40'D
<b>Truck Court:</b>	150' including a 60' concrete apron
<b>Sprinkler:</b>	ESFR System with Pump
<b>Construction:</b>	Architectural Tilt-Up Concrete with Tinted Glass and Aluminum Storefronts
<b>Car Parking:</b>	99 Spaces
<b>Electrical Service:</b>	3 phase, 480 volts 200 amp Upon Tenant Verification

## Listing Summary

<b>Total Size Available:</b>	6,700 SF
<b>Office Size:</b>	1,307 SF
<b>Doors:</b>	1 Dock High Doors 1 Ramp to Grade
<b>Lease Rate:</b>	\$17.00/SF NNN
<b>Op Ex:</b>	\$3.69/SF

