

2001 ARTHUR AVENUE

ELK GROVE VILLAGE, IL

Owned By:
LBALogistics 

FOR LEASE: 52,135 SF AVAILABLE



**STATE-OF-THE ART
LOGISTICS BUILDING**
IDEAL DISTRIBUTION SPACE
32' CLEAR • 13 DOCKS

PROPERTY HIGHLIGHTS

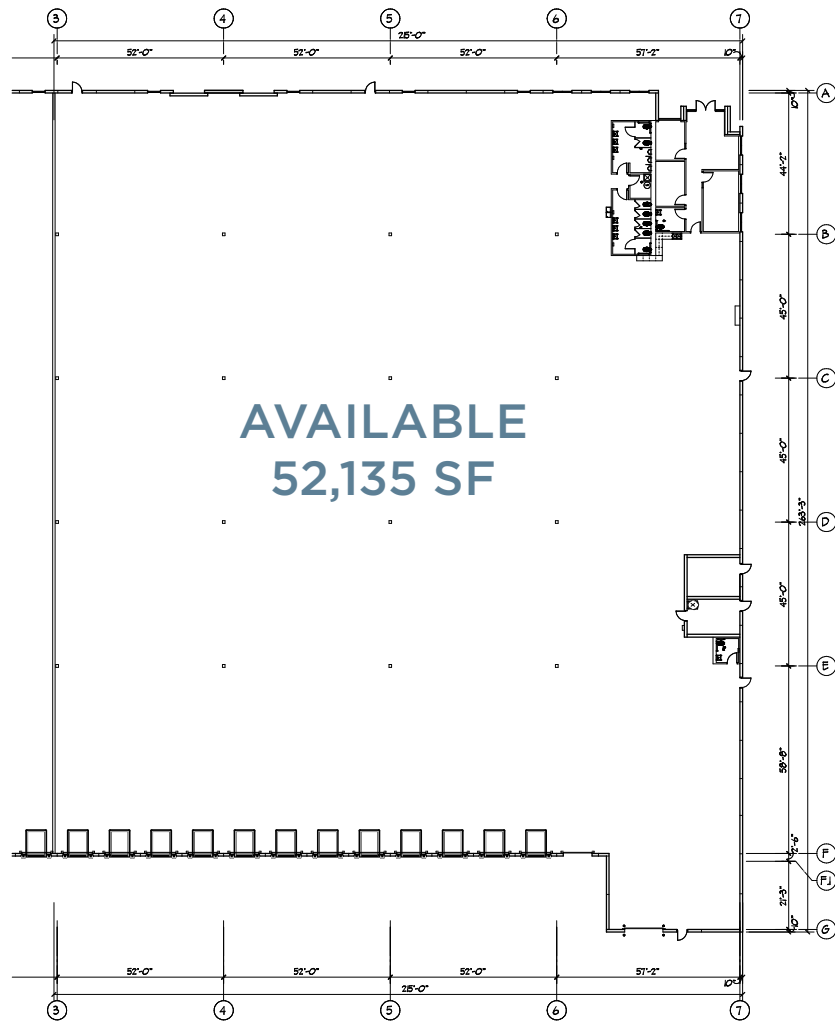
- Available Space: 52,135 SF
- Office Space: 1,536 SF
- Configuration: Rear Load
- Clear Height: 32'
- Dock Doors: 13 (12 equipped)
- DID: (1) 12' x 14'
- Column Spacing: 52' x 45'
- Speed Bays: 60'
- Truck Court: 130'
- Auto Parking: 69
- Sprinkler System: ESFR
- Year Built: 2018
- Low Cook County 6B Taxes
- Great Proximity to O'Hare



JONATHAN KOHN
1 847 698 8279
jonathan.kohn@colliers.com

JOHN D'ORAZIO
1 847 384 2823
john.dorazio@colliers.com

SITE PLAN



PROPERTY DESCRIPTION

- Building Size: 79,205 SF
- Configuration: Rear Load
- Shell Construction: Precast Concrete
- Clear Height: 32'
- Dock Doors: 13 (12 equipped)
- DID: (1) 12' x 14'
- Column Spacing: 52' x 45'
- Speed Bays: 60'
- Truck Court: 130'
- Auto Parking: 106
- Slab: 7" unreinforced
- Electrical: TBD
- Sprinkler System: ESFR



JONATHAN KOHN
1 847 698 8279
jonathan.kohn@colliers.com

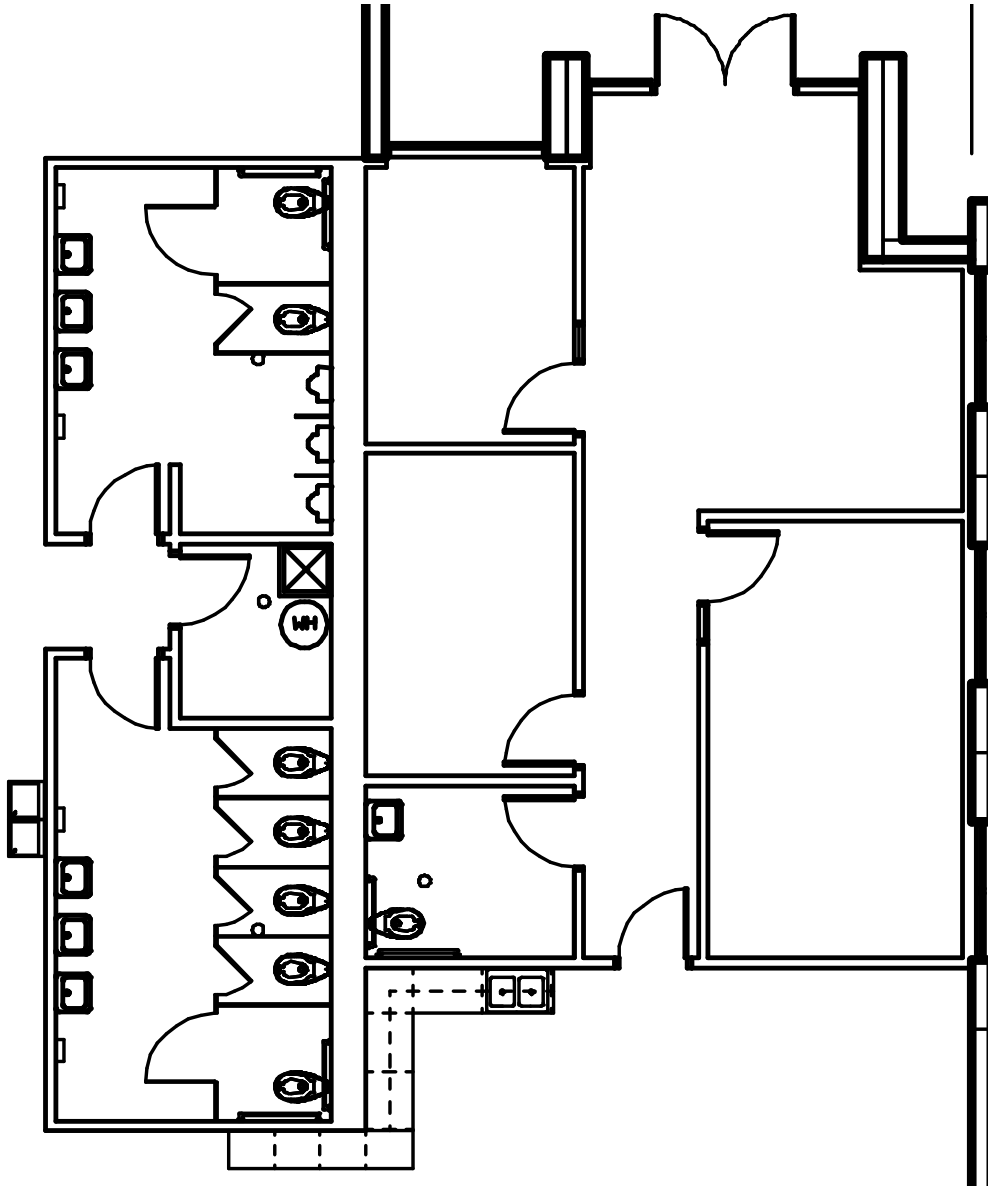
JOHN D'ORAZIO
1 847 384 2823
john.dorazio@colliers.com

2001 ARTHUR AVENUE

ELK GROVE VILLAGE, IL

Owned By:
LBALogistics 

OFFICE FLOOR PLAN



JONATHAN KOHN
1 847 698 8279
jonathan.kohn@colliers.com

JOHN D'ORAZIO
1 847 384 2823
john.dorazio@colliers.com

2001 ARTHUR AVENUE

ELK GROVE VILLAGE, IL

Owned By:
LBALogistics 

12 MINUTES/4.6 MILES FROM O'HARE SOUTH CARGO ENTRANCE



JONATHAN KOHN
1 847 698 8279
jonathan.kohn@colliers.com

JOHN D'ORAZIO
1 847 384 2823
john.dorazio@colliers.com