

8870

LIQUID CT

San Diego, CA 92121

Renovations complete!

FOR LEASE

Freestanding **198,702 SF** Industrial Facility
in Premier San Diego Location



LBA Logistics 

Jones Lang LaSalle Brokerage, Inc. RE Lic. #01856260



INTRODUCING **SAN DIEGO'S PREMIER
INFILL FACILITY**

Surrounded by buzzing commerce activity and global companies right in your neighborhood, 8870 Liquid Ct offers endless opportunity for distribution, logistics, R&D, eCommerce, 3PL or life sciences tenants to connect with San Diego, Orange County, and Greater Los Angeles' thriving populations and essential partners within a short mile radius. Putting size, access, and efficiency at the center of your experience, this is a rare, must-see opportunity.



198,702
Square Feet



Class A, Central
location (Miramar/
Sorrento Mesa)

Renovations
Complete

Flexible Building Design
Can accommodate Distribution,
Manufacturing, & R&D Uses

BUILDING FEATURES

Property address:
8870 Liquid Court, San Diego, CA 92121

Building size:
198,702 SF

Submarket:
Miramar

Asking lease rate:
Contact Brokers

Zoning:
IL-2-1

Clear height:
22' - 24'

Renovations:
Complete

Lot size:
10.21 Acres

Existing Infrastructure

Fire sprinklers, natural gas, 2,000 Amps of 3-Phase power (to be verified), exterior backup generator (788-gallon capacity), refrigerated areas within building.

Features

Excellent Central San Diego location, prime Western Miramar location with easy access to 805 via Camino Santa Fe. Rare, 200,000 SF availability in class A submarket. Freestanding building, fully fenced and secure, concrete truck courts, and parking areas. 1st time on market in over 30 years.

Loading

27 trailer positions
(at platforms)

44 trailer stalls
on site

3 concrete
platforms

8870
LIQUID CT

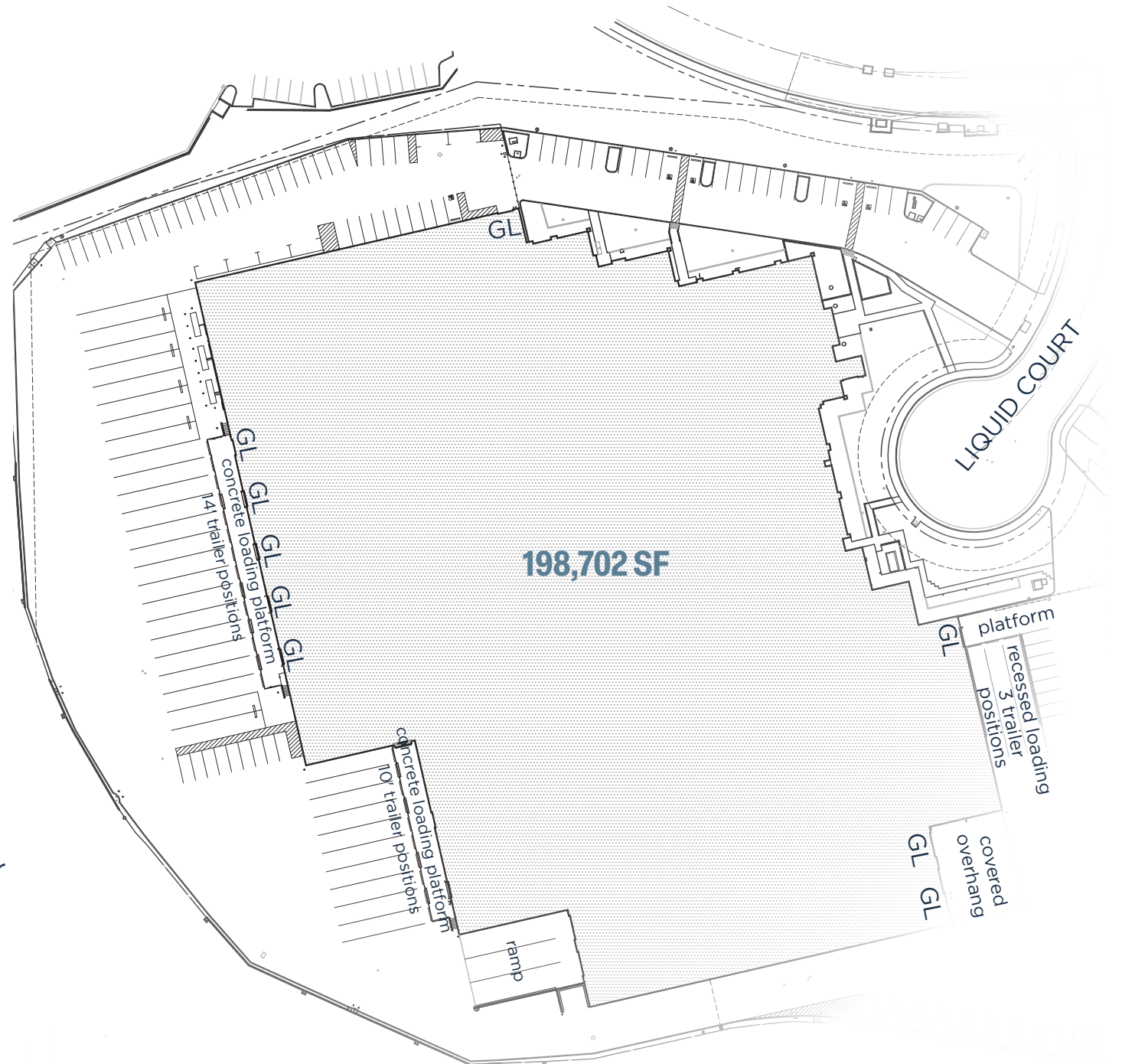
San Diego, CA 92121

SITE PLAN

Lot size:
10.21 Acres | 444,747 SF

OFFICE: 19%:
±38,088 SF
±18,436 SF ground floor
±19,652 SF 2nd story

WAREHOUSE: 81%:
±160,614 SF



The image shows the interior of a large, empty industrial warehouse. The ceiling is high, featuring a complex network of wooden beams, metal trusses, and silver insulation. Several skylights are integrated into the roof structure, providing natural light. The floor is a smooth, light-colored concrete. On the left side, there are large roll-up doors, some of which are partially open, revealing an outdoor area with trees. The walls are white and feature various pipes and conduits. The overall atmosphere is clean, bright, and spacious.

**MAKE YOUR MARK ON THIS
PREVIOUS BEER DISTRIBUTION
FACILITY, AVAILABLE FOR THE
FIRST TIME IN OVER 30 YEARS**



8870

LIQUID CT

FLOOR PLANS

CONTACT

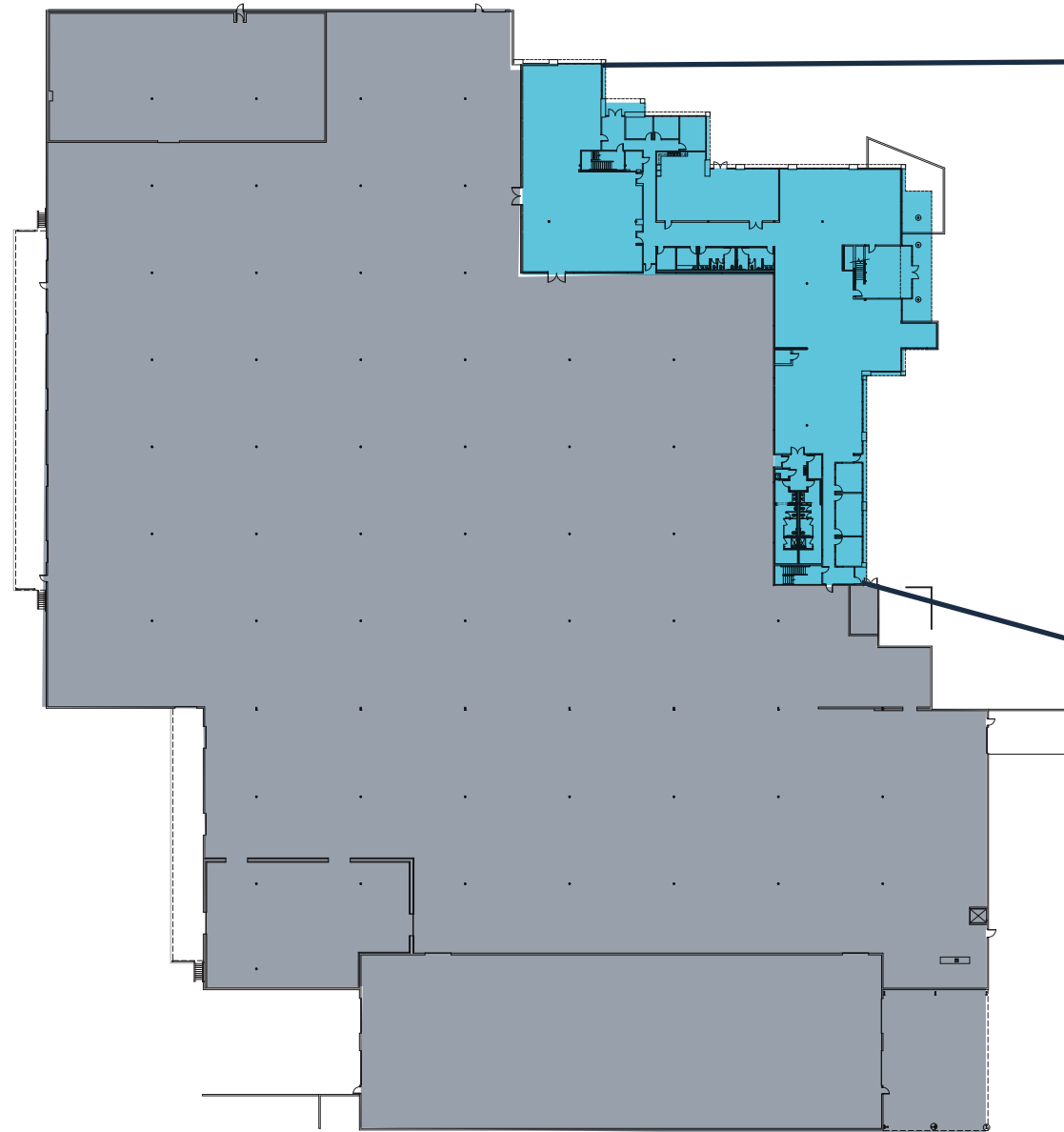
JOE ANDERSON
Managing Director
RE Lic. #01509782
+1 858 410 6360
joe.anderson@jll.com

MICKEY MORERA
Executive Vice President
RE Lic. #00950071
+1 858 369 3030
mickey.morera@kidder.com

1st FLOOR

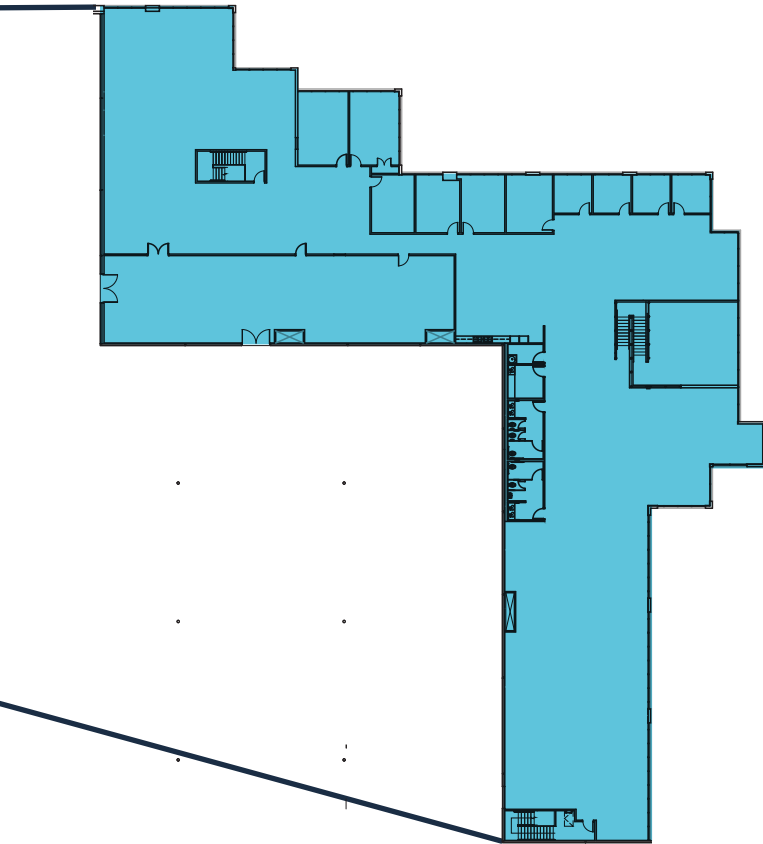
OFFICE: 18,436 SF

WAREHOUSE: 160,614 SF



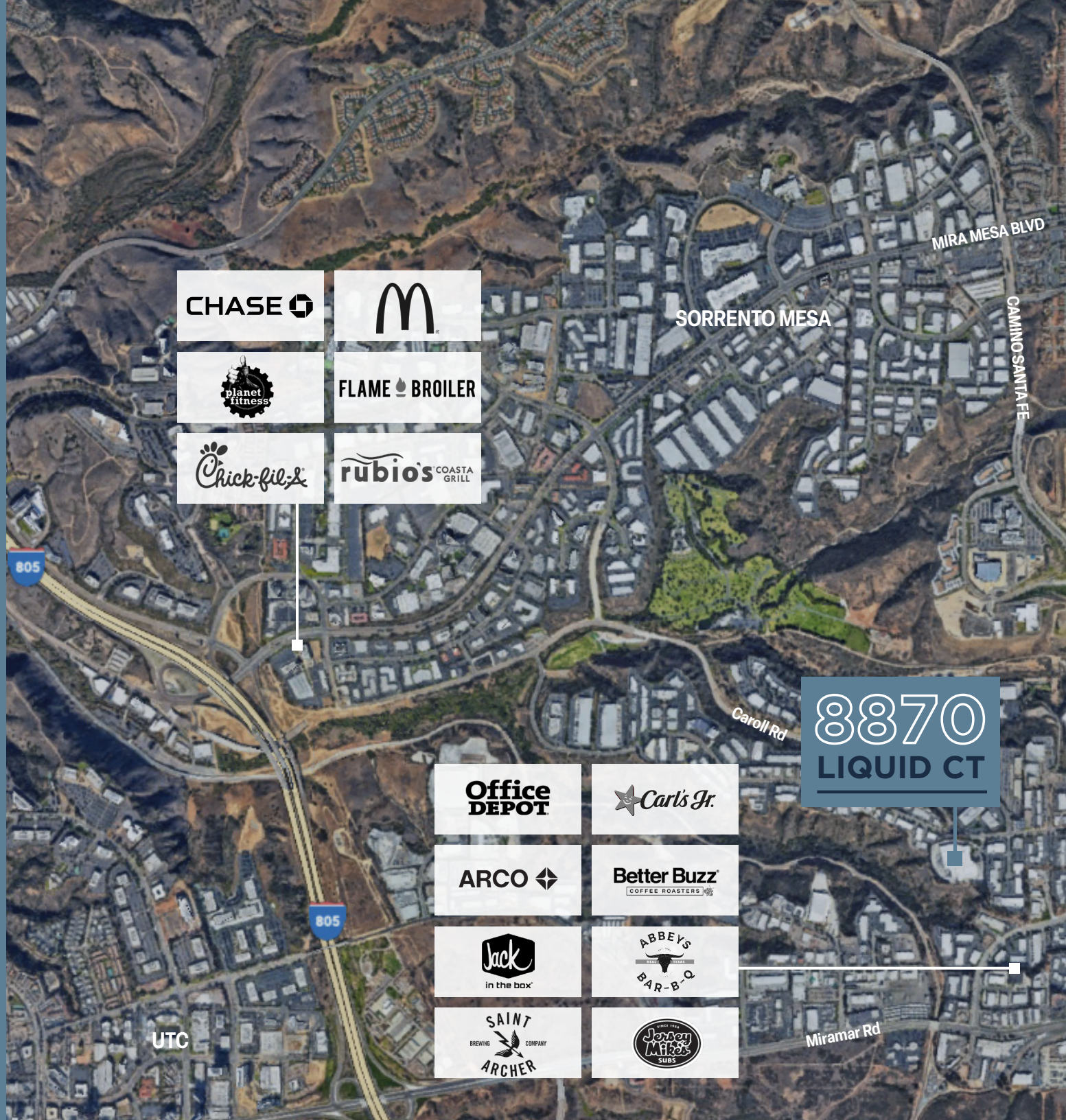
2nd FLOOR

OFFICE: 19,652 SF



8870
LIQUID CT

NEARBY AMENITIES



CHASE

McDonald's

planet fitness

FLAME BROILER

Chick-fil-A

rubio's COASTA GRILL

SORRENTO MESA

MIRA MESA BLVD

CAMINO SANTA FE

805

Carol Rd

8870
LIQUID CT

Office DEPOT

Carl's Jr.

ARCO

Better Buzz COFFEE ROASTERS

Jack in the box

ABBEYS BAR-B-Q

SAINT ARCHER BREWING COMPANY

Jersey Mike's SUBS

UTC

805

Miramar Rd

MIRA MESA

MIRA MESA MARKET CENTER

VILLAGE AT MIRA MESA



target



CHIPOTLE
MEXICAN GRILL

BevMo!



the Habit
BURGER GRILL

VONS



Chick-fil-A



Pasta Cane's
CHICKEN FINGERS

petco



RED LOBSTER
FRESH FISH - LIVE LOBSTER



Chevron

Walgreens

3 ROOTS
SORRENTO MESA

TRADER JOE'S



REGAL



BARNES & NOBLE
BOOKSELLERS



IN-N-OUT
BURGER



Applebee's



Jerome's
Furniture



THE HOME
DEPOT

Walgreens

HARBOR FREIGHT
QUALITY TOOLS LOWEST PRICES

BREWSKIS
BAR & ARCADE



BALLAST
POINT
BEER & SPIRITS



pure
Project



Mikkeller



Dunn Edwards
PAINTS



ALESMITH
BREWING COMPANY
HAND-POURED ALES



ATHLETIC BREWING CO.
100% LOCAL BEER





TORREY PINES

SORRENTO MESA

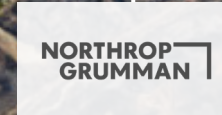
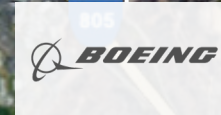
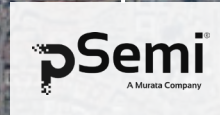
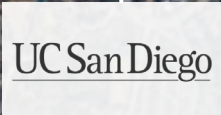
MIRA MESA BLVD

CAMINO SANTA FE

UTC

Miramar Rd

8870
LIQUID CT





UC San Diego

SHARP



ThermoFisher
SCIENTIFIC

MIRA MESA

SCRIPPS RANCH



TESLA



RIVIAN



8870
LIQUID CT

CORPORATE NEIGHBORS

CONTACT

JOE ANDERSON

Sr. Managing Director
RE Lic. #01509782
+1 858 410 6360
joe.anderson@jll.com

MICKEY MORERA

Executive Vice President
RE Lic. #00950071
+1 858 369 3030
mickey.morera@kidder.com

8870

LIQUID CT

San Diego, CA 92121



Although information has been obtained from sources deemed reliable, neither Owner nor JLL makes any guarantees, warranties or representations, express or implied, as to the completeness or accuracy as to the information contained herein. Any projections, opinions, assumptions or estimates used are for example only. There may be differences between projected and actual results, and those differences may be material. The Property may be withdrawn without notice. Neither Owner nor JLL accepts any liability for any loss or damage suffered by any party resulting from reliance on this information. If the recipient of this information has signed a confidentiality agreement regarding this matter, this information is subject to the terms of that agreement. © 2024 Jones Lang LaSalle IP, Inc. All rights reserved.