

# 10600 BELMONT AVENUE

## FRANKLIN PARK, IL



215,108 SF AVAILABLE



## PROPERTY HIGHLIGHTS

- 215,108 SF Building
- Main Office: 8,163 SF
- Mezzanine: 8,277 SF
- Warehouse: 198,668 SF
- Land Site: 8.89 acres
- Ceiling Height: 24'
- 22 interior docks (w/ dock locks); 1 DID
- Parking: 100 cars; 34 trailers
- Power: 2000 amps, 480 volt, 3 phase (upon tenant verification)
- Column Spacing: 40' x 40'
- Sprinkler: ESFR
- Year Built: 1996
- Lease Rate: STO
- Real Estate Taxes: \$5.98 PSF (2026 est.)
- CAM: \$0.35 PSF (2026 est.)
- Property Management Fee: 3% of gross rent
- Insurance: \$0.13 PSF
- Available: 11/1/26



**JONATHAN KOHN**  
1 773 627 7847  
jonathan.kohn@colliers.com

**RONALD J. BEHM, SIOR**  
1 847 712 6010  
ron.behm@colliers.com

Owned By:

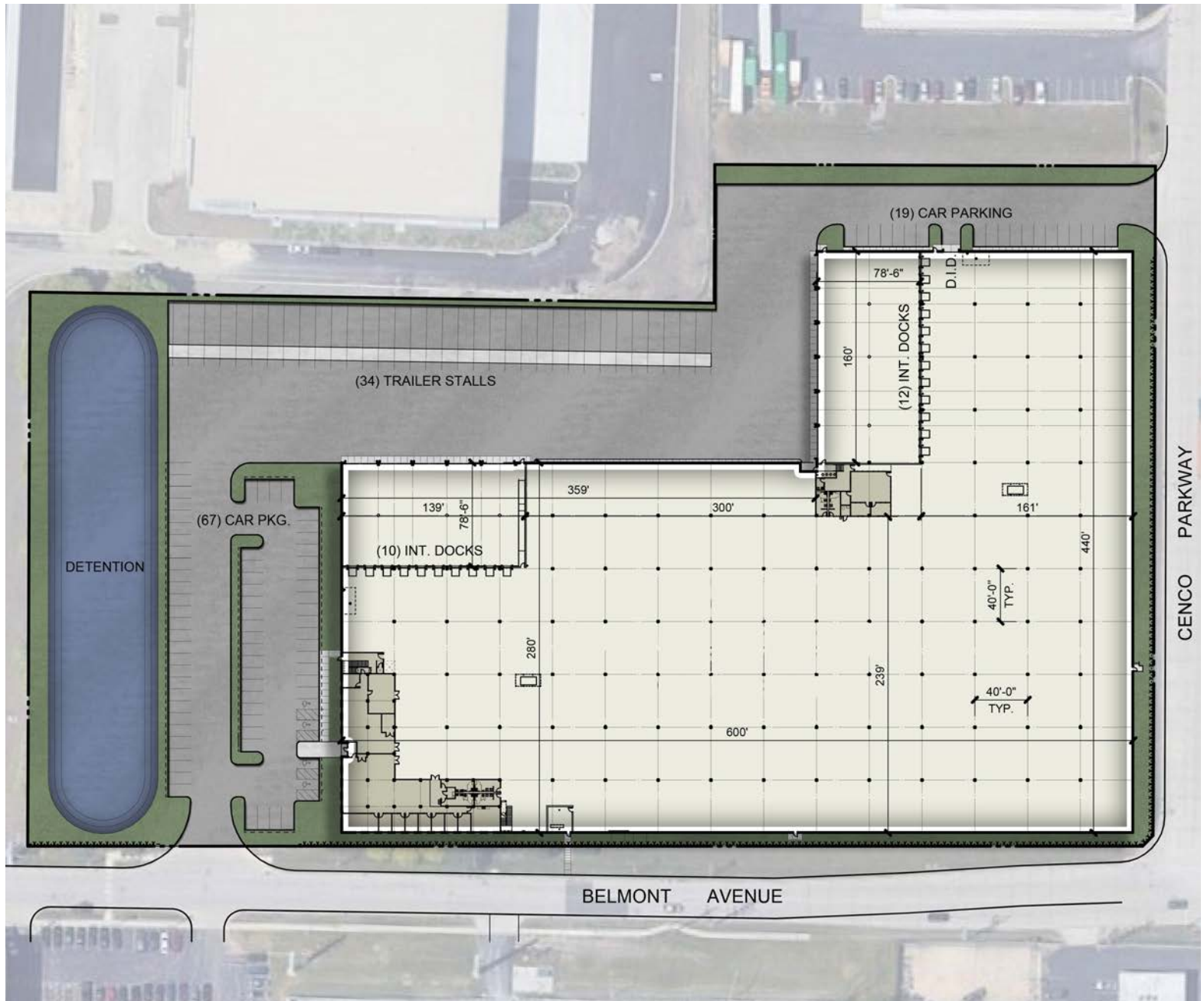
**LBA**Logistics

# 10600 BELMONT AVENUE

FRANKLIN PARK, IL



## SITE PLAN



**JONATHAN KOHN**  
1 773 627 7847  
jonathan.kohn@colliers.com

**RONALD J. BEHM, SIOR**  
1 847 712 6010  
ron.behm@colliers.com

Owned By:

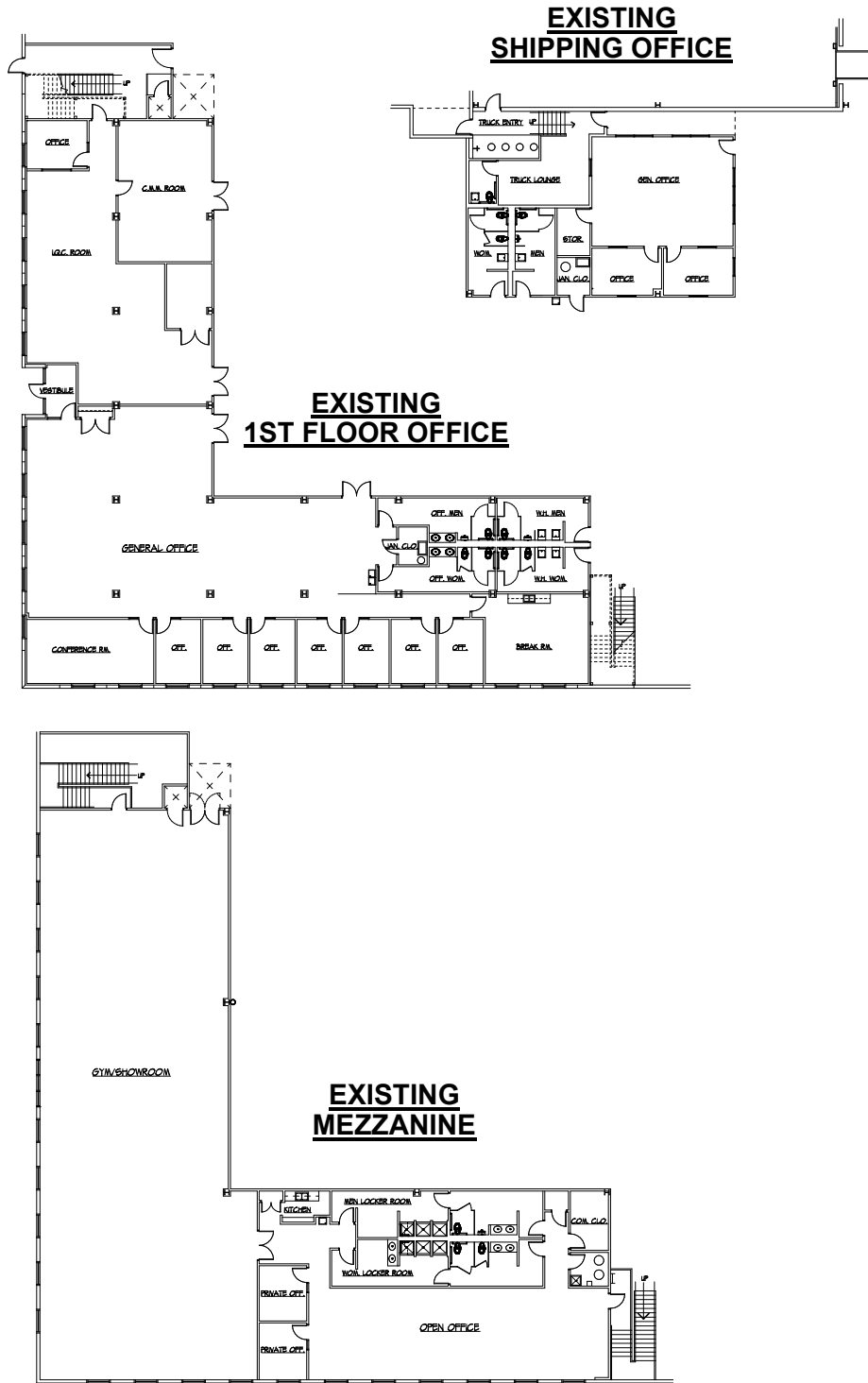
**LBA**Logistics

# 10600 BELMONT AVENUE

FRANKLIN PARK, IL



## OFFICE PLAN



**JONATHAN KOHN**  
1 773 627 7847  
jonathan.kohn@colliers.com

**RONALD J. BEHM, SIOR**  
1 847 712 6010  
ron.behm@colliers.com

Owned By:

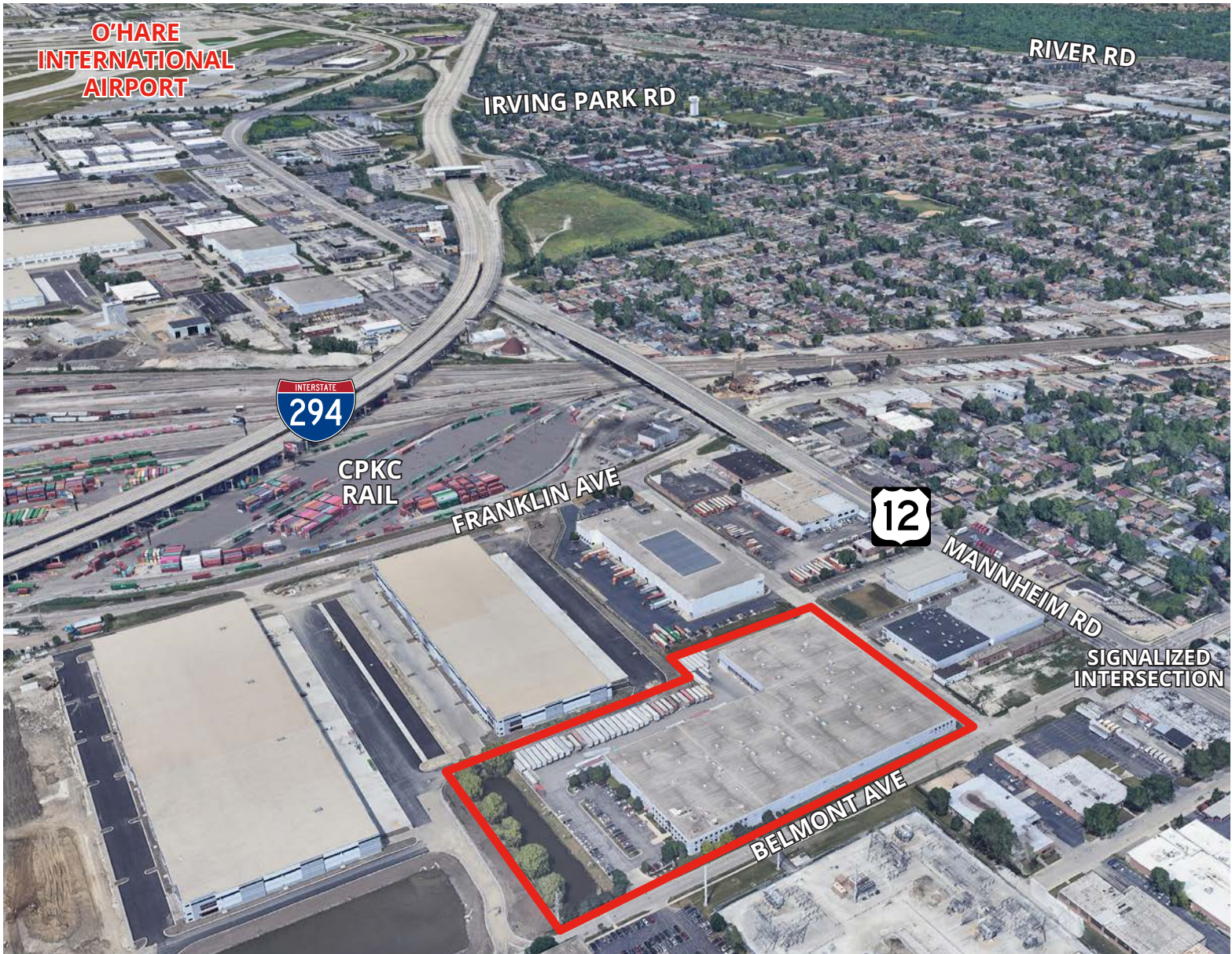


# 10600 BELMONT AVENUE

FRANKLIN PARK, IL



6 MINUTES/2.6 MILES FROM O'HARE SOUTH CARGO ENTRANCE



**JONATHAN KOHN**  
1 773 627 7847  
jonathan.kohn@colliers.com

**RONALD J. BEHM, SIOR**  
1 847 712 6010  
ron.behm@colliers.com

Owned By:

**LBA**Logistics

# 10600 BELMONT AVENUE FRANKLIN PARK, IL



## AREA CORPORATE NEIGHBORS



JONATHAN KOHN  
1 773 627 7847  
jonathan.kohn@colliers.com

RONALD J. BEHM, SIOR  
1 847 712 6010  
ron.behm@colliers.com

Owned By:

LBA Logistics

# 10600 BELMONT AVENUE FRANKLIN PARK, IL



## AERIAL PHOTOS



**JONATHAN KOHN**  
1 773 627 7847  
jonathan.kohn@colliers.com

**RONALD J. BEHM, SIOR**  
1 847 712 6010  
ron.behm@colliers.com

Owned By:

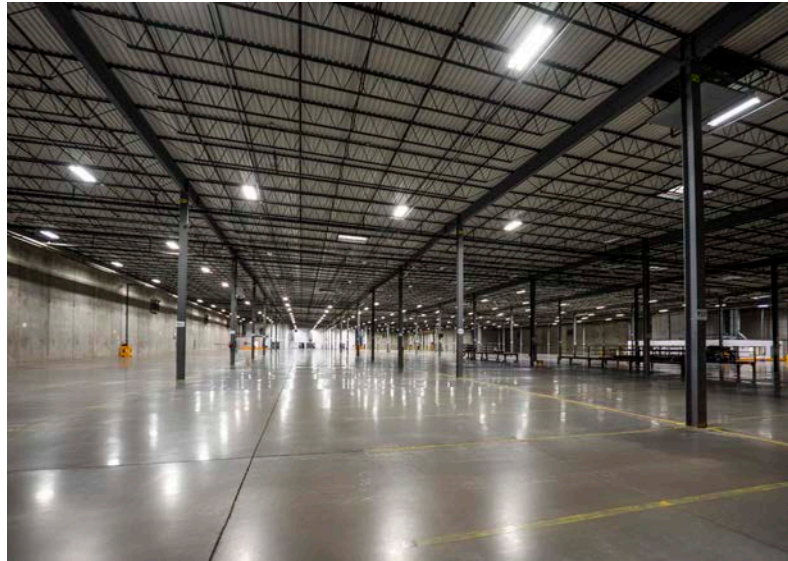
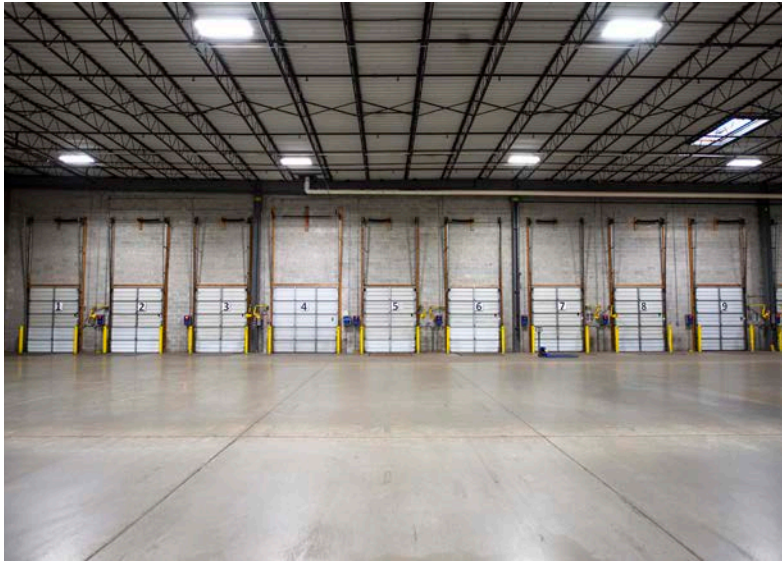
**LBA**Logistics

# 10600 BELMONT AVENUE

FRANKLIN PARK, IL



## BUILDING PHOTOS



**JONATHAN KOHN**  
1 773 627 7847  
jonathan.kohn@colliers.com

**RONALD J. BEHM, SIOR**  
1 847 712 6010  
ron.behm@colliers.com

Owned By:

**LBA**Logistics