



# UNIVERSITY

## LOGISTICS CENTER

**±112,300 SF NEWLY RENOVATED**

1345 SOUTH 52ND STREET | TEMPE, ARIZONA 85281

LBA Logistics 

 CUSHMAN & WAKEFIELD



# 1345 SOUTH 52ND STREET

TEMPE, ARIZONA 85281

PROPERTY OVERVIEW



**494 EXISTING PARKING SPOTS,  
9.17 ACRES FOR PARKING  
OR ADDITIONAL DEVELOPMENT**



**3 MILES EAST OF SKY  
HARBOR INTERNATIONAL  
AIRPORT**



**TEMPE NORTH  
SUBMARKET**



**FORMER  
OPERATIONS FACILITY**



**ACCESS TO LARGE  
LABOR POOLS**



**PROXIMITY TO I-10  
AND US-60 FREEWAYS**

# ±112,300 SF LOGISTICS HUB

## IN THE HEART OF TEMPE, ARIZONA

LOCATION FEATURES



### PROXIMITY TO NATION'S LARGEST UNIVERSITY

The Property is located 2 miles southwest of Arizona State University's (ASU) main campus. ASU is the largest public university by enrollment in the United States with approximately 103,400 students.



### DOWNTOWN TEMPE IS THRIVING

With Tempe's population exceeding 175,000, the Property is positioned in one of the top cities in North America to live and work as evidenced by exceptional year-round climate, affordable housing, a thriving business environment. The high quantity of young, well-educated professionals entering the workforce will continue to place Tempe at the forefront of global business innovation and productivity.



### TRANSPORTATION LINKAGES

Located near the confluence of the US-60 and I-10 freeways in Tempe, Arizona. I-10 access is gained from Broadway Road to the south and the US-60 can be accessed off of Priest Drive to the southeast. Seven major freeways/expressways are located within ten minutes of the Property including the Interstate 10 (I-10), Sky Harbor expressway (SR-153), Hohokam expressway (SR-143), Superstition freeway (US-60), Red Mountain freeway (Loop-202), Piestewa freeway (SR-51), and the Black Canyon freeway (I-17). The Property is also located 5 minutes of Phoenix Sky Harbor International Airport, one of the top 10 busiest airports in the US by passenger count.



LOCATION FEATURES



**BlueSky**  
Airport Parking

**PHX**  
PHOENIX SKY HARBOR  
INTERNATIONAL AIRPORT

**Denny's**

DISTANCE VIA  
3.2 MILES / 5 MIN TO  
SKY HARBOR AIRPORT

**SUTTER'S MILL**  
SPECIALTIES

ARIZONA  
**143**

202

**Ryder**

**DriveTime** HYATT PLACE  
**CARVANA**

**COMTECH**  
EF DATA

**V&V**  
Specialty Vehicle Wash

**QUALITY VANS**  
SPECIALTY VEHICLES

**WESTLAND**  
DISTRIBUTING

UNIVERSITY DRIVE

**SPRAY**  
SYSTEMS

**ARMOR KOTE**  
GARAGE FLOORS

**QT**  
QuikTrip

**MICROCHIP**

**Medtronic**  
Alleviating Pain - Restoring Health - Extending Life

**flex**

**MODERN AUTO**  
Concierge Dealer

**TruStop Inc.**

52ND STREET

**L3HARRIS**  
FAST. FORWARD.

**UNIVERSITY**  
LOGISTICS CENTER

309 Park Spots

14TH STREET

**VOYA**  
FINANCIAL

**pearl.**  
INTERACTIVE NETWORK

**CONNECT AIR**  
GENUINE CABLE GROUP  
**vitalant**  
Blood Donation  
**ELS**



<b>LOCATION</b>	1345 South 52nd Street Tempe, Arizona 85281
<b>SITE AREA</b>	±9.172 acres (±399,534 SF)
<b>ZONING</b>	GID, City of Tempe
<b>PARCEL</b>	124-58-047A
<b>FRONTAGE</b>	The property has approximately 395' of frontage along South 52nd Street and approximately 796' of frontage along West 14th Street.

<b>WATER</b>	City of Tempe
<b>SEWER</b>	City of Tempe
<b>UTILITIES</b>	Salt River Project (SRP)
<b>TELEPHONE</b>	CenturyLink (currently disconnected) Cox Communications
<b>GAS</b>	Southwest Gas
<b>A/C</b>	100% Air Conditioned - New Units in 2023
<b>NEW</b>	Offices & Restrooms

<b>RENOVATIONS</b>	<ul style="list-style-type: none"> <li>3 New Truck Wells</li> <li>10 New Grade Level Loading Positions</li> <li>New Interior LED Lighting</li> <li>New LED Lighting in Parking Areas</li> <li>New Spec Office and Warehouse Restrooms</li> </ul>	<ul style="list-style-type: none"> <li>New HVAC (Office/Warehouse)</li> <li>18 New Windows and Storefront Entry for Will Call</li> <li>New Concrete Truck Court</li> <li>New Seal Coat</li> <li>32' Clear Height (2nd Floor Removal)</li> </ul>
<b>ACCESS</b>	Ingress/Egress to the site is provided by three (3) curb cuts. Access off 52nd Street serves the main entrance on the NW corner of the Property, with two (2) additional access points to the uncovered parking fields on the east with the access points off West 14th Street and South Edwards Drive.	
<b>PARKING</b>	Parking provides a total of <b>494</b> on-grade, uncovered existing spaces on the parcel, for a ratio of 4.49/1,000. Included in the total parking count are 25 canopy spaces and 8 handicapped accessible spaces.	

# FLOOR PLAN | ±112,300 SF



3 TRUCK  
WELLS



10 GRADE  
LEVEL DOORS

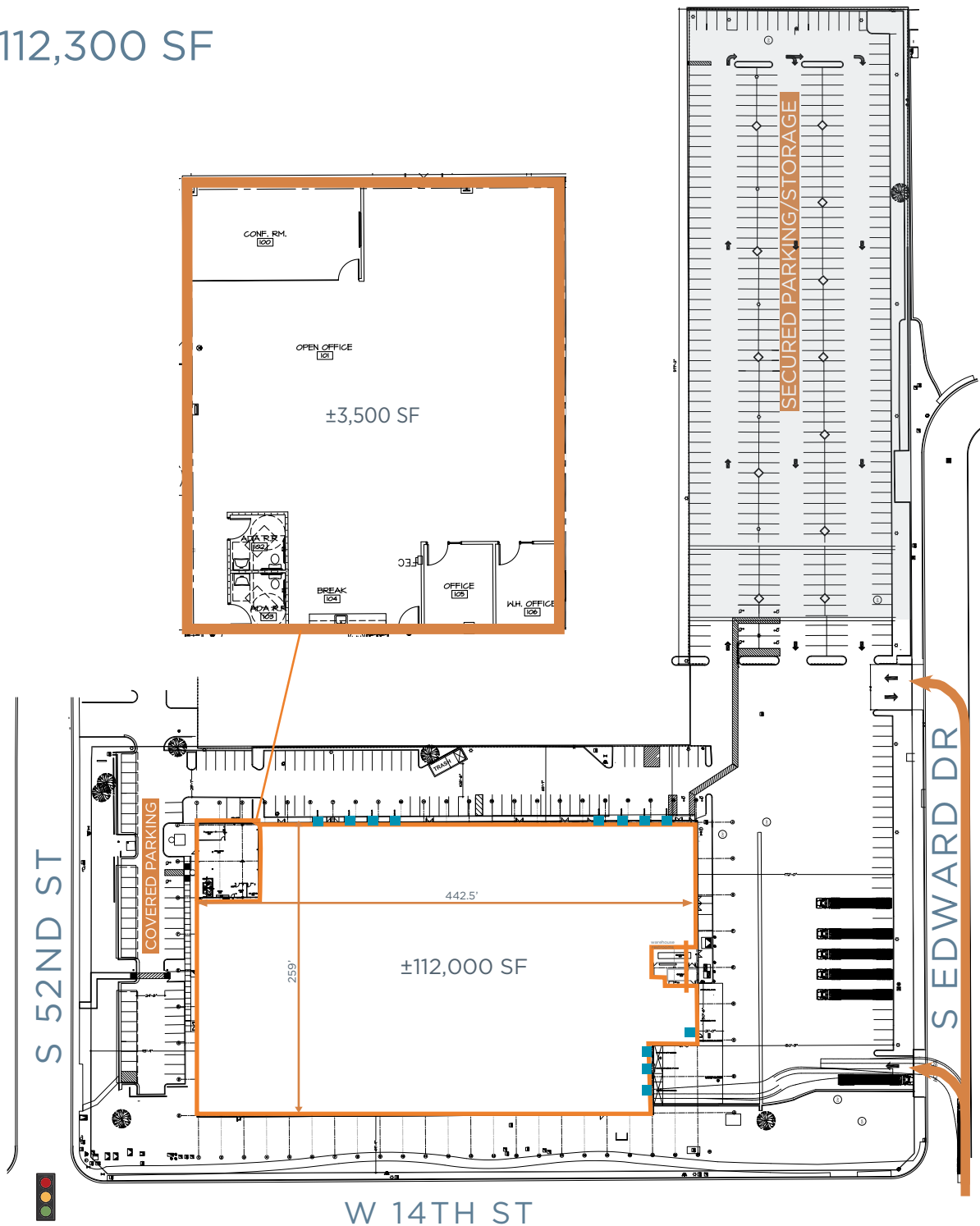
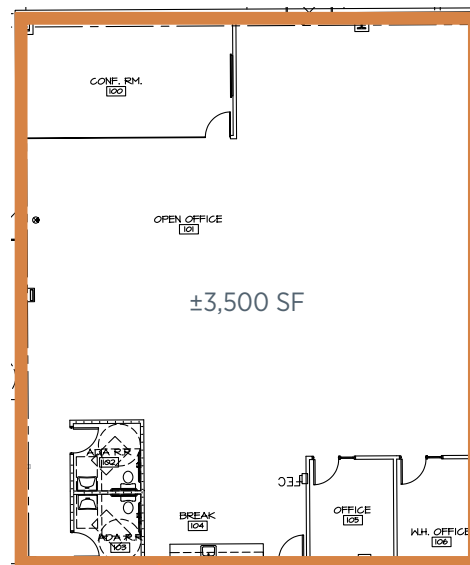


SECURED PARKING  
& TRAILER STORAGE

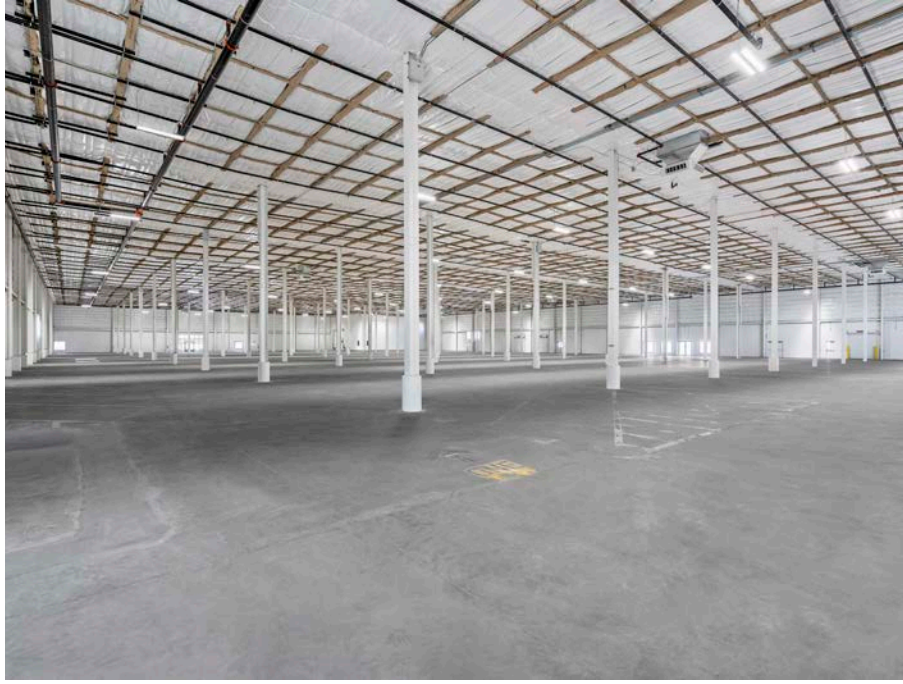


THREE POINTS OF  
INGRESS/EGRESS

BUILDING AREA	±112,300 SF
SPEC OFFICE	±3,500 SF
BUILDING HEIGHT	32' CLEAR
BUILDING DEPTH	259'
BUILDING WIDTH	442.5'



PROPERTY PHOTOS





# UNIVERSITY LOGISTICS CENTER



## NEWLY RENOVATED

1345 SOUTH 52ND STREET | TEMPE, ARIZONA 85281

### MIKE HAENEL

Executive Vice Chair  
+1 602 224 4404  
mike.haenel@cushwake.com

### ANDY MARKHAM, SIO

Executive Vice Chair  
+1 602 224 4408  
andy.markham@cushwake.com

### PHIL HAENEL

Vice Chair  
+1 602 224 4409  
phil.haenel@cushwake.com

2555 E CAMELBACK RD, STE 400 | PHOENIX, ARIZONA 85016 | P + 1 602 954 9000 | F + 1 602 253 0528 | [CUSHMANWAKEFIELD.COM](http://CUSHMANWAKEFIELD.COM)

LBA Logistics 

 CUSHMAN &  
WAKEFIELD

©2024 Cushman & Wakefield. All rights reserved. The information contained in this communication is strictly confidential. This information has been obtained from sources believed to be reliable but has not been verified. No warranty or representation, express or implied, is made as to the condition of the property (or properties) referenced herein or as to the accuracy or completeness of the information contained herein, and same is submitted subject to errors, omissions, change of price, rental or other conditions, withdrawal without notice, and to any special listing conditions imposed by the property owner(s). Any projections, opinions or estimates are subject to uncertainty and do not signify current or future property performance.