



## N Market Boulevard

1415 1435  
1417 1419 1431 1433  
1421 1429  
1425 1427

**1415-1435 N Market Boulevard, Sacramento, CA**

**Tommy Ponder, SIOR**  
Executive Vice President  
+1 916 563 3005  
tommy.ponder@colliers.com  
CA Lic. 01431506

**George Vrame SIOR**  
Senior Vice President  
+1 916 563 3041  
george.vrame@colliers.com  
CA Lic. 02028936

**Emily Breece**  
Associate  
+1 916 563 3091  
emily.breece@colliers.com  
CA Lic. 02147323

LBA Logistics 

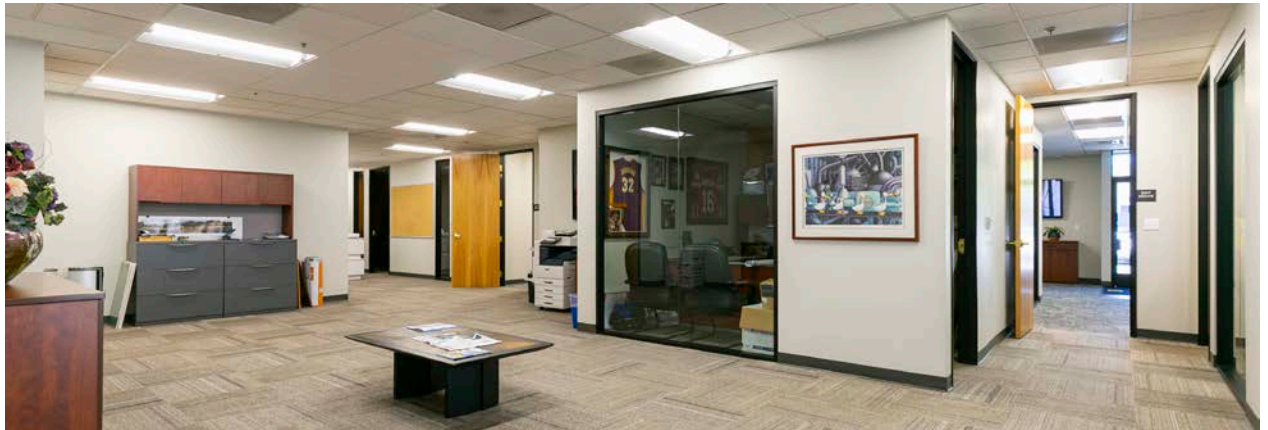
# North Natomas Business Park

±195,000 SF Office/Industrial Flex Space



# PROPERTY HIGHLIGHTS

- › Close proximity to several amenities
- › On-site property management
- › Convenient access to I-80 and I-5
- › 15 minute drive to Sacramento International Airport
- › 10 minute drive to Downtown
- › Zoned MP or M-1
- › Ample parking





# AVAILABLE SPACE

\*Click a building number to view available floor plans

## 1419

Suite 3:  $\pm 2,038$  Total SF |  $\pm 904$  SF Office |  $\pm 1,134$  SF Warehouse  
Suite 5:  $\pm 2,942$  Total SF |  $\pm 1,226$  SF Office |  $\pm 1,716$  SF Warehouse

## 1421

$\pm 20,849$  -  $\pm 50,870$  SF  
(adjoining yard available  $\pm 27,236$  -  $\pm 54,472$  SF)

## 1431

Suite 1:  $\pm 4,038$  Total SF |  $\pm 2,785$  SF Office |  $\pm 1,253$  SF Warehouse

## 1435

Suite 1:  $\pm 3,915$  Total SF |  $\pm 3,495$  SF Office/Showroom |  $\pm 420$  SF Warehouse



N Market Blvd.



**Colliers**

This document has been prepared by Colliers International for advertising and general information only. Colliers International makes no guarantees, representations or warranties of any kind, expressed or implied, regarding the information including, but not limited to, warranties of content, accuracy and reliability. Any interested party should undertake their own inquiries as to the accuracy of the information. Colliers International excludes unequivocally all inferred or implied terms, conditions and warranties arising out of this document and excludes all liability for loss and damages arising there from. This publication is the copyrighted property of Colliers International and/or its licenso(r)s. Real estate officer license corporation identification number 01908588. ©2026. All rights reserved.

**TOMMY PONDER, SIOR**  
 Executive Vice President  
 +1 916 563 3005  
 tommy.ponder@colliers.com  
 CA Lic. 01431506

**GEORGE VRAME, SIOR**  
 Senior Vice President  
 +1 916 563 3041  
 george.vrame@colliers.com  
 CA Lic. 02028936

**EMILY BREECE**  
 Associate  
 +1 916 563 3091  
 emily.breece@colliers.com  
 CA Lic. 02147323