



Colliers

N Market Boulevard

1415

1435

1417

1419

1431

1433

1421

1429

1425

1427

1415-1435 N Market Boulevard, Sacramento, CA

Tommy Ponder, SIOR
Executive Vice President
+1 916 563 3005
tommy.ponder@colliers.com
CA Lic. 01431506

George Vrame SIOR
Vice President
+1 916 563 3041
george.vrame@colliers.com
CA Lic. 02028936

Emily Breece
Associate
+1 916 563 3091
emily.breece@colliers.com
CA Lic. 02147323

LBA Logistics 

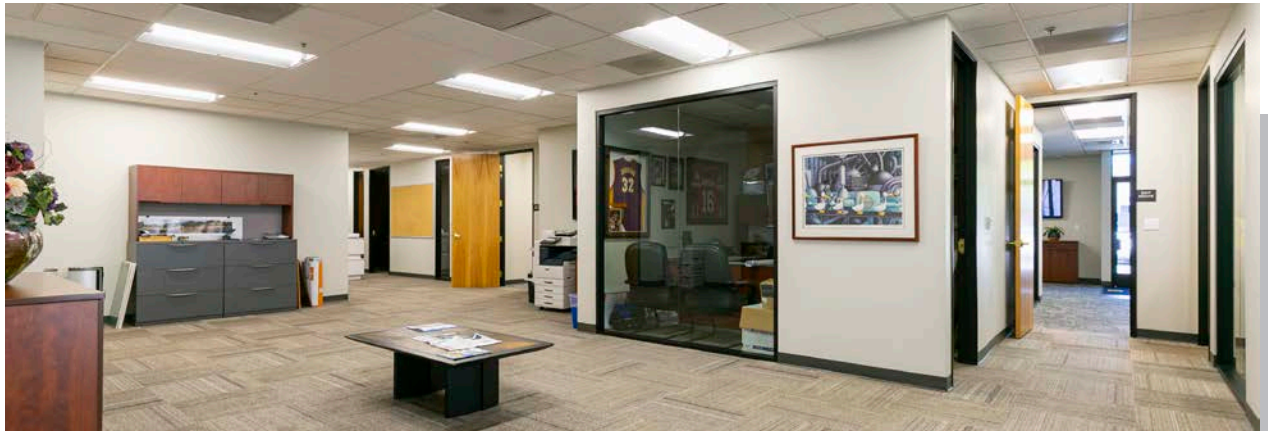
North Natomas Business Park

±195,000 SF Office/Industrial Flex Space



PROPERTY HIGHLIGHTS

- › Close proximity to several amenities
- › On-site property management
- › Convenient access to I-80 and I-5
- › 15 minute drive to Sacramento International Airport
- › 10 minute drive to Downtown
- › Zoned MP or M-1
- › Ample parking





AVAILABLE SPACE

*Click a building number to view available floor plans

1421

±20,849 - ±50,870 SF
(adjoining yard available ±27,236 - ±54,472 SF)

1429

Suite 1: ±3,911 Total SF | ±1,826 SF Office | ±2,085 SF Warehouse



N Market Blvd.



This document has been prepared by Colliers International for advertising and general information only. Colliers International makes no guarantees, representations or warranties of any kind, expressed or implied, regarding the information including, but not limited to, warranties of content, accuracy and reliability. Any interested party should undertake their own inquiries as to the accuracy of the information. Colliers International excludes unequivocally all inferred or implied terms, conditions and warranties arising out of this document and excludes all liability for loss and damages arising there from. This publication is the copyrighted property of Colliers International and/or its licensor(s). Real estate officer license corporation identification number 01908588. ©2025. All rights reserved.

TOMMY PONDER, SIOR
Executive Vice President
+1 916 563 3005
tommy.ponder@colliers.com
CA Lic. 01431506

GEORGE VRAME, SIOR
Vice President
+1 916 563 3041
george.vrame@colliers.com
CA Lic. 02028936

EMILY BREECE
Associate
+1 916 563 3091
emily.breece@colliers.com
CA Lic. 02147323