

# Calaveras Center

308-396 South Abbott Ave

Milpitas, CA 95035  
[www.cbre.com/siliconvalley](http://www.cbre.com/siliconvalley)

±1,078 SF - ±2,313 SF



## Available

**320-324 South Abbott Avenue | ±2,156 SF**  
100% HVAC Office

Available

**340-344 South Abbott Avenue | ±2,313 SF**  
50% Office. 50% Warehouse. 1 Grade Level Door

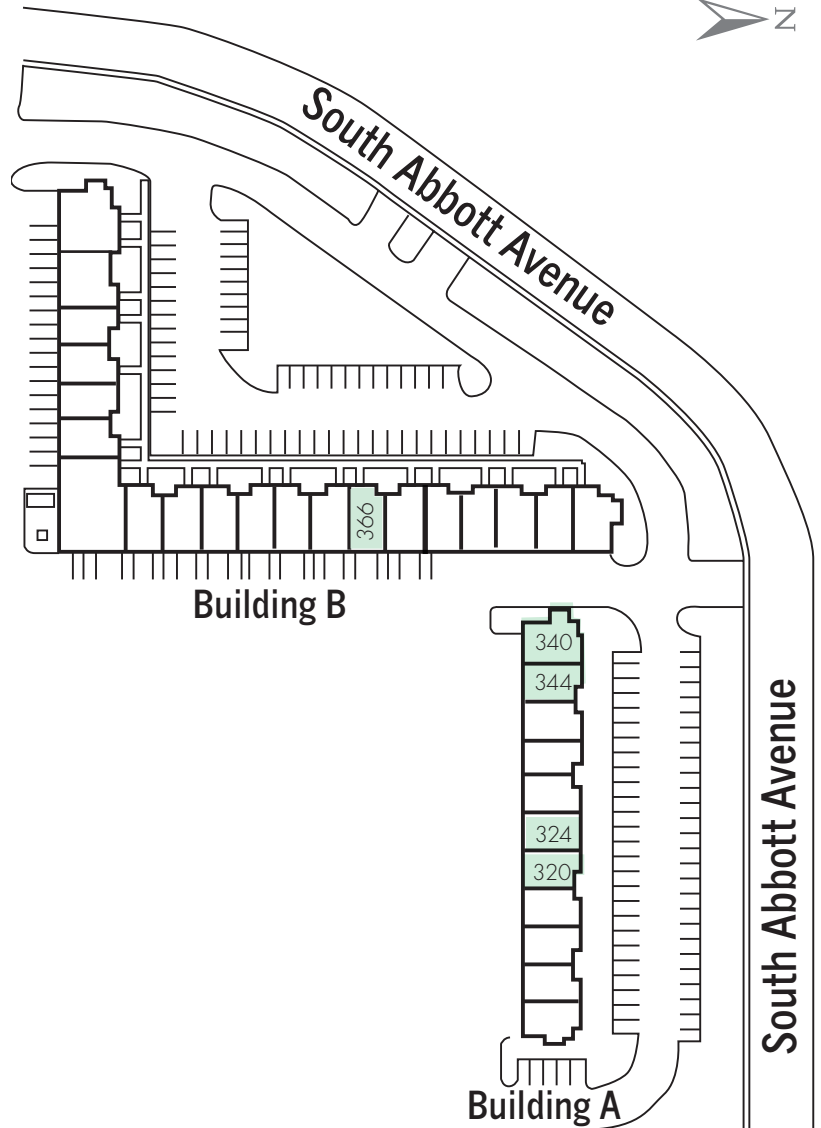
Available

**366 South Abbott Avenue | ±1,078 SF**  
50% Office. 50% Warehouse. 1 Grade Level Door

Available

## Site Plan

INTERSTATE 880



NOT TO SCALE

## Property Features

- + ±1,078 - ±3,062 SF Available
- + Strategic location at Highway 237 and I-880
- + Easy arterial freeway access

- + Grade-level loading
- + Minutes from numerous restaurants, shopping, hotels, and other amenities
- + Call to tour

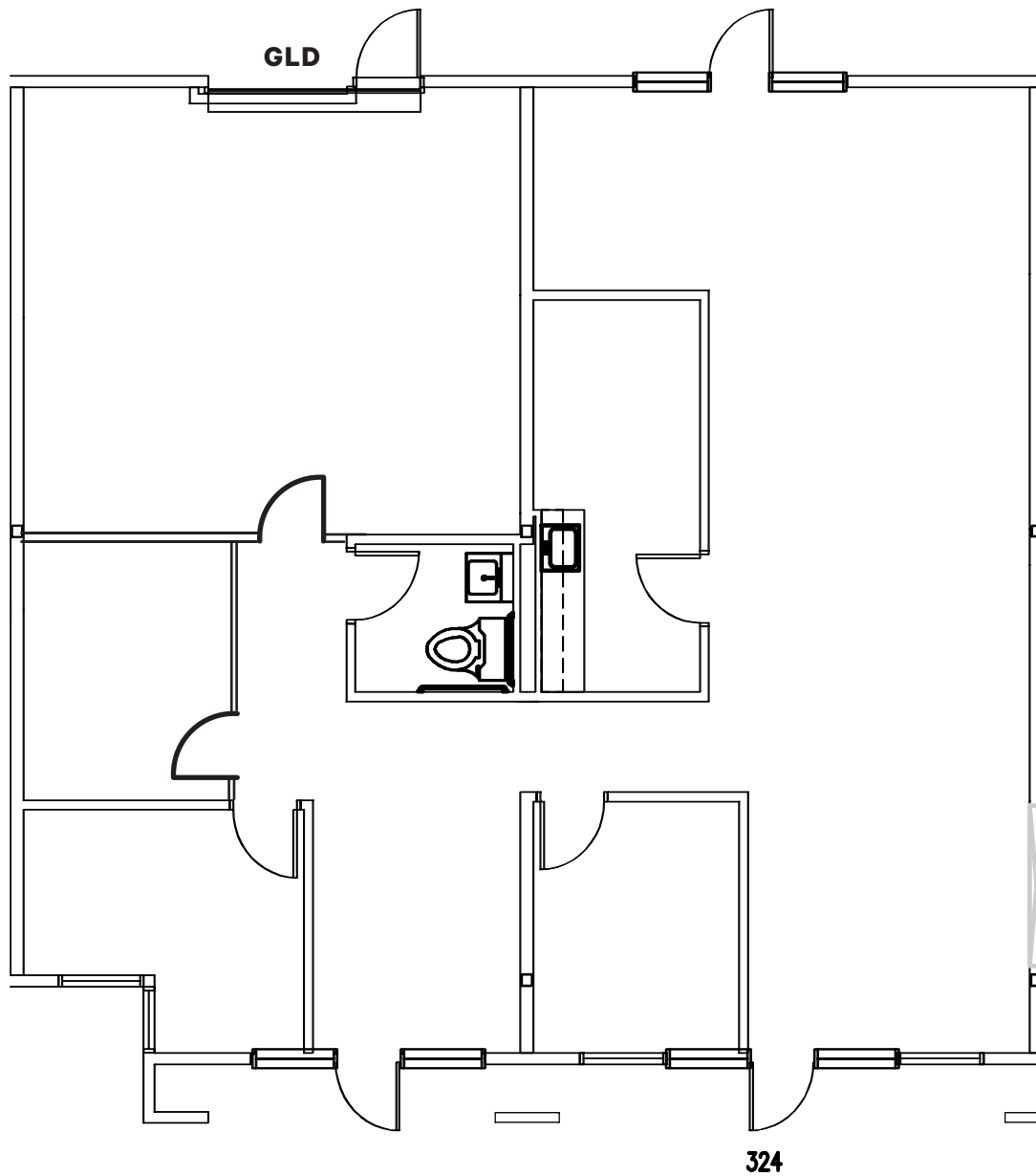
# Floorplan

---

## 320-324 South Abbott Avenue

±2,156 Square Feet

Available



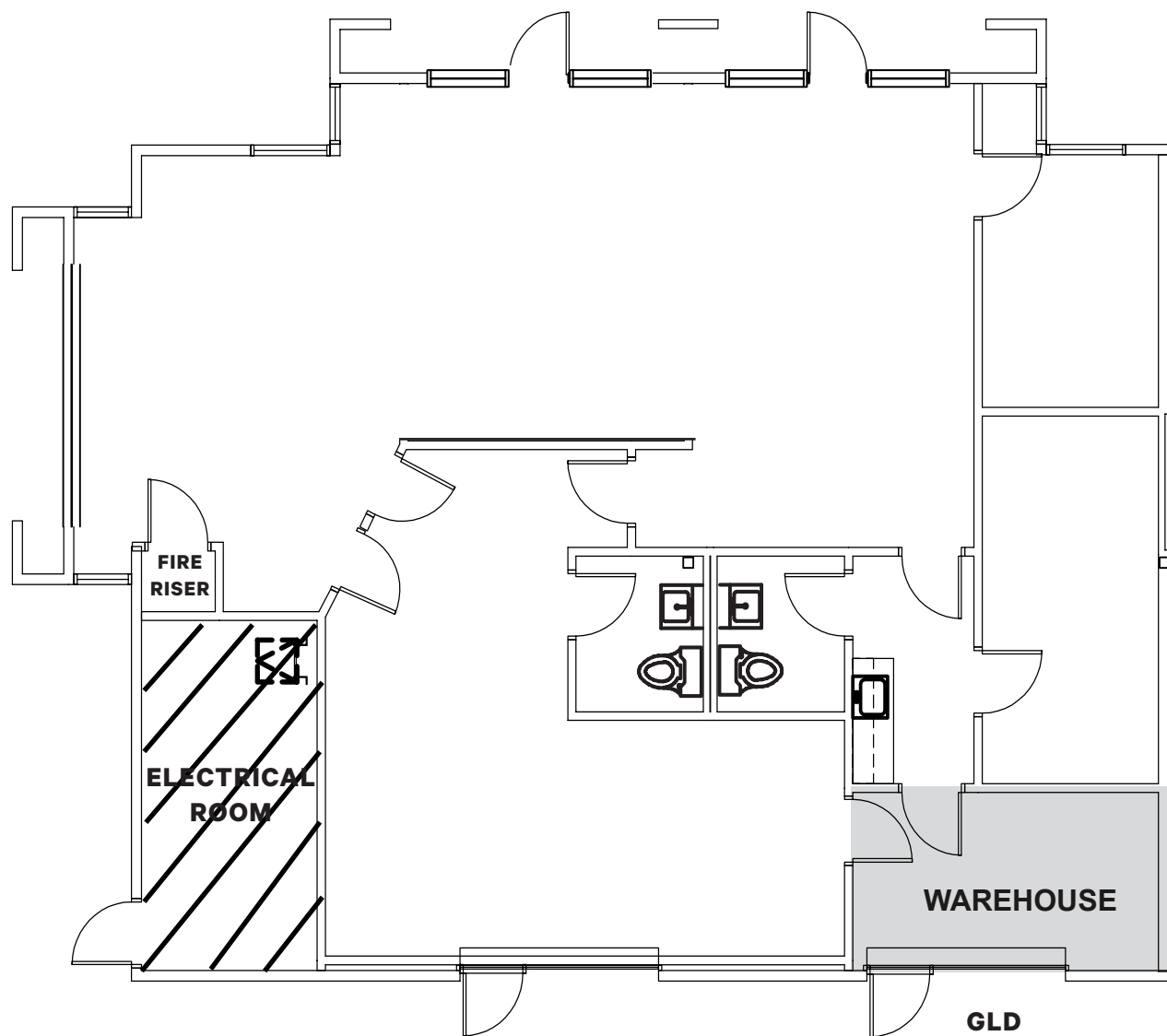
NOT TO SCALE

# Floorplan

## 340-344 South Abbott Avenue

±2,313 Square Feet

Available



NOT TO SCALE

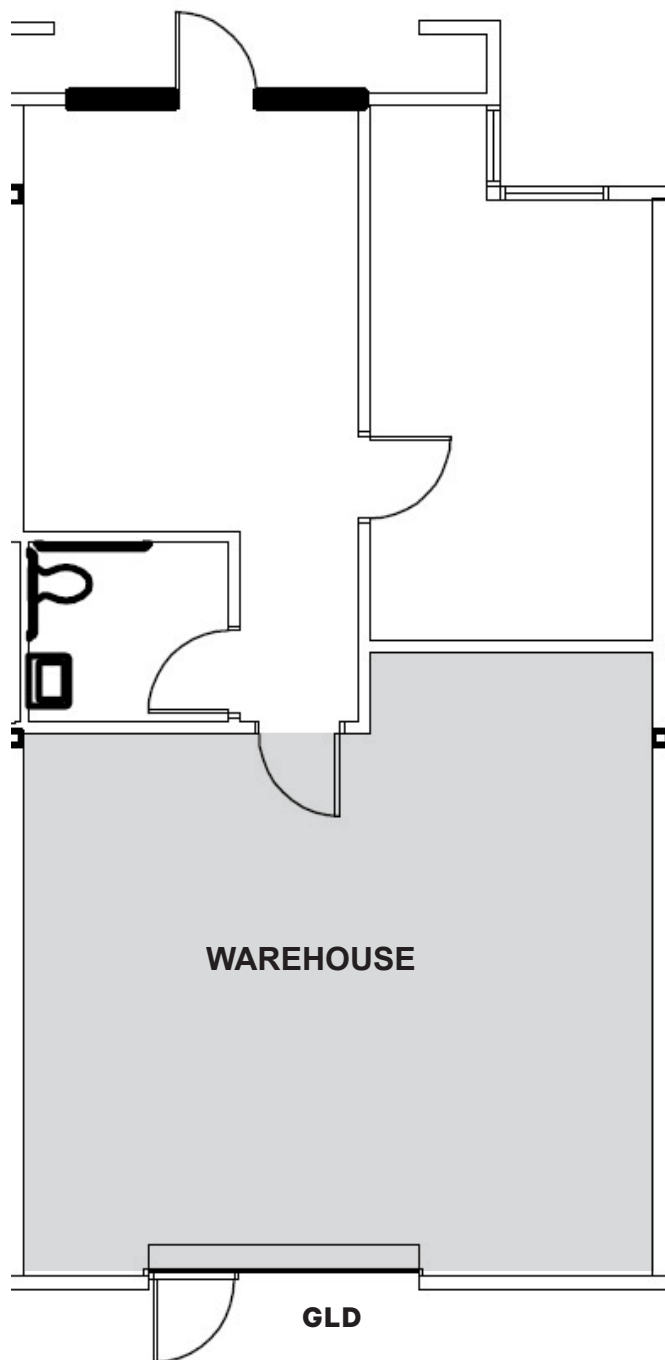
# Floorplan

---

## 366 South Abbott Avenue

±1,078 Square Feet

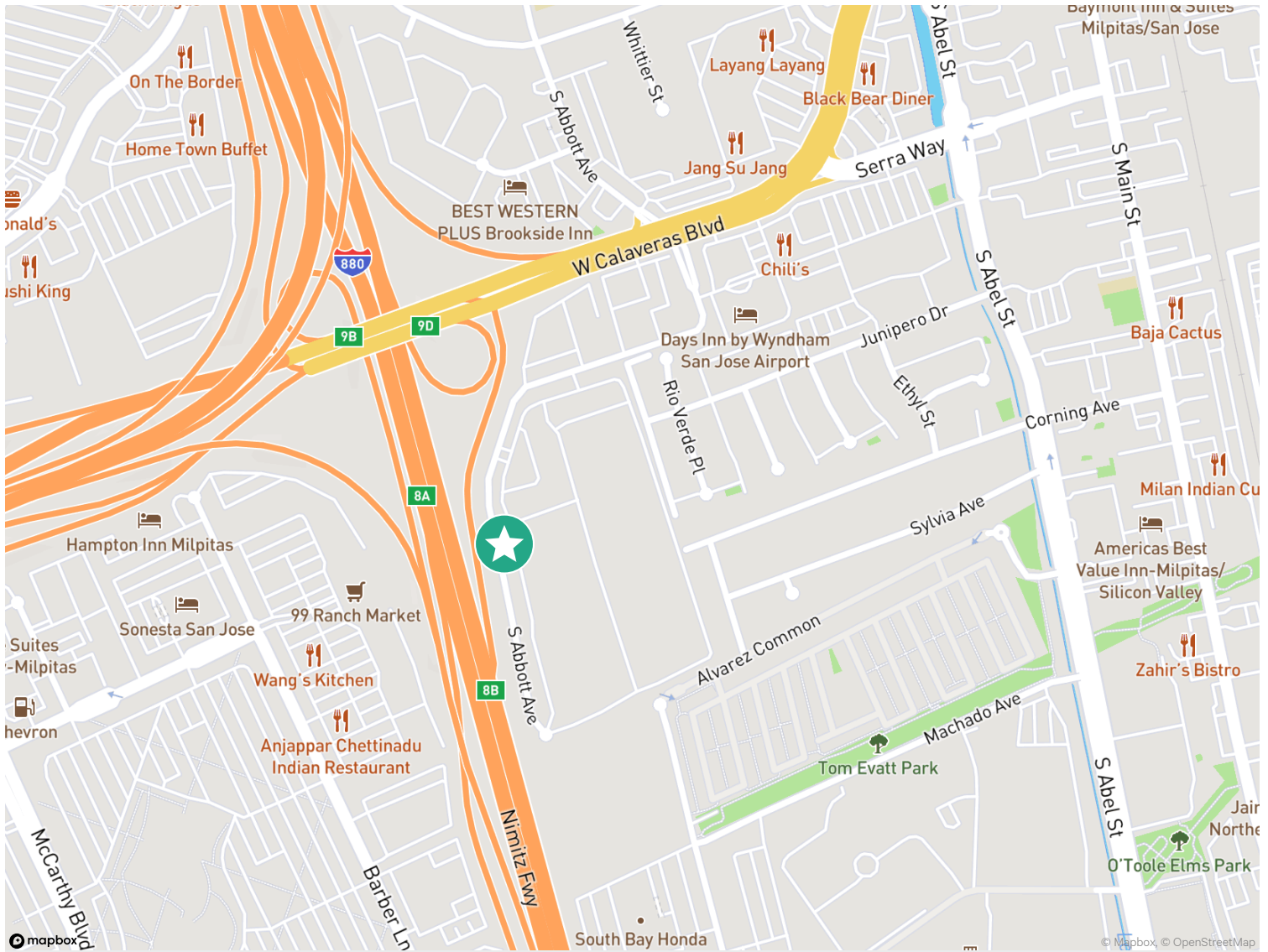
Available



NOT TO SCALE

# Calaveras Center, 308-396 South Abbott Ave

Milpitas, CA 95035



## Contact Us

### Paul Lyles

First Vice President  
+1 408 453 7443  
paul.lyles@cbre.com  
Lic. 01236021

© 2025 CBRE, Inc. All rights reserved. This information has been obtained from sources believed reliable but has not been verified for accuracy or completeness. CBRE, Inc. makes no guarantee, representation or warranty and accepts no responsibility or liability as to the accuracy, completeness, or reliability of the information contained herein. You should conduct a careful, independent investigation of the property and verify all information. Any reliance on this information is solely at your own risk. CBRE and the CBRE logo are service marks of CBRE, Inc. All other marks displayed on this document are the property of their respective owners, and the use of such marks does not imply any affiliation with or endorsement of CBRE. Photos herein are the property of their respective owners. Use of these images without the express written consent of the owner is prohibited.