

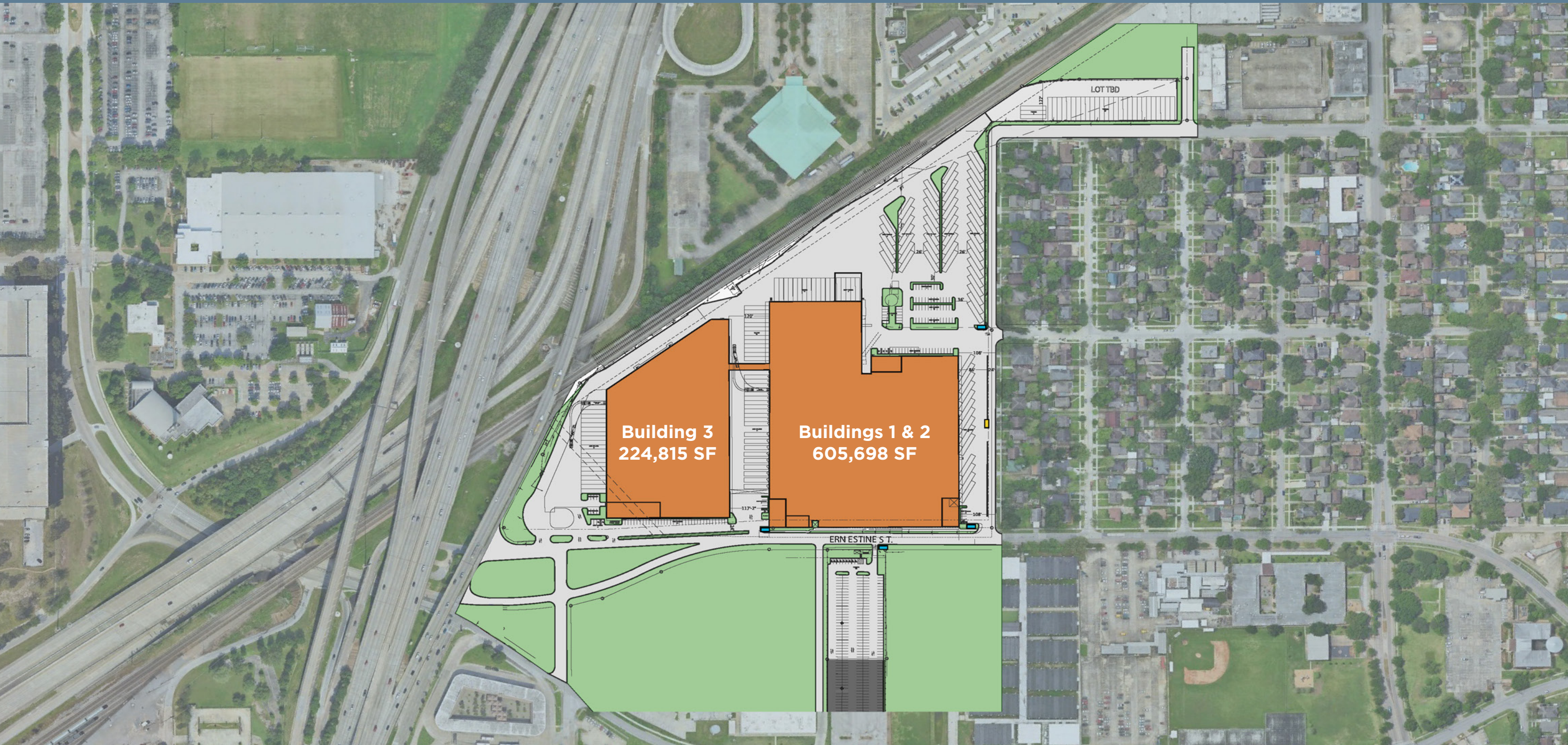


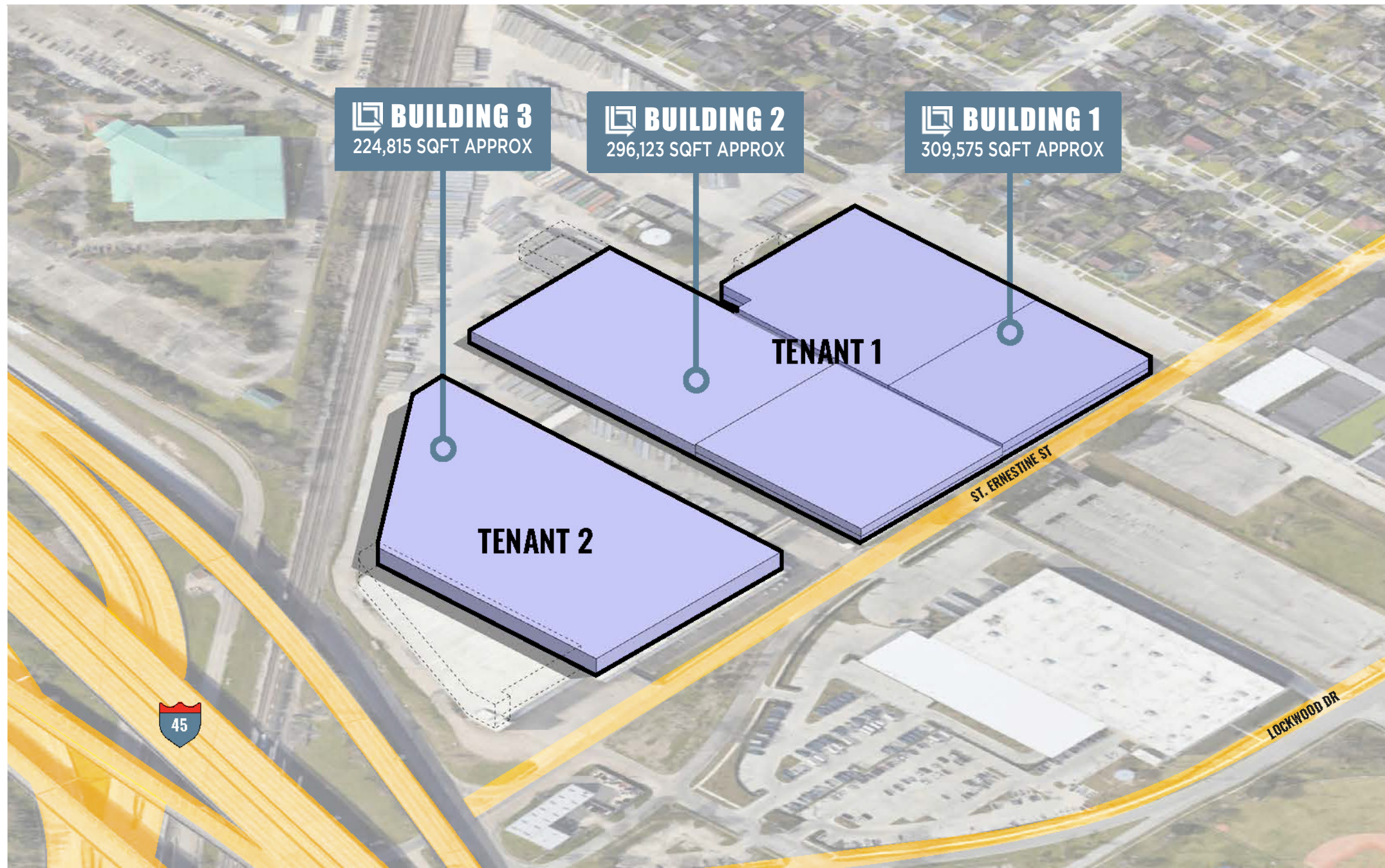
# EAST END LOGISTICS PARK

FOR LEASE - 830,513 SF TOTAL AREA - DIVISIBLE

2103 ERNESTINE ST | HOUSTON, TX 77023







**BUILDING 3**  
224,815 SQFT APPROX

**BUILDING 2**  
296,123 SQFT APPROX

**BUILDING 1**  
309,575 SQFT APPROX

**TENANT 1**

**TENANT 2**

### **BUILDING SEGMENT 1:**

**BASED ON MACY'S AS-BUILTS  
INCLUDES THE MECHANICAL ROOM OUT ON LEVEL 1**

- First Floor: 155,985 SF
- Second Floor: 153,590 SF
- Office: Available To-Suit
- 12' - 13' Clear
- 14 Loading Docks
- 1 Ramp
- Heavy Power
- 27 Trailer Parks
- 92 Car Parks
- 108' Truck Court

### **BUILDING 2:**

**BASED ON MACY'S AS-BUILTS  
EXCLUDES FUR-ROOM DEMO**

- First Floor: 195,773 SF
- Second Floor: 73,350 SF (excludes open to below on South and Northwest corners)
- Office: Available To-Suit
- 14' Clear
- 52 Loading Docks
- 1 Ramp
- Heavy Power
- 27 Trailer Parks
- 121 Car Parks
- 120' Shared Truck Court

### **BUILDING 3:**

**BASED ON CIVIL SURVEY BUILDING OUTLINE AND  
REMEDYING AS-BUILTS  
BLDG 3 IS OFF IN THE AS-BUILTS**

- First Floor: 192,196 SF
- Second Floor: 31,899 SF (remaining mezzanine space after demo)
- Office: Available To-Suit
- 27'-5" Clear
- 24 Loading Docks
- 1 Ramp
- Heavy Power
- 27 Trailer Parks
- 83 Car Parks
- 150' - 180' Truck Court



# MULTI-TENANT BUILDING PLAN



**BUILDING 3**  
224,815 SQFT APPROX

**BUILDING 2**  
296,123 SQFT APPROX

**BUILDING 1**  
309,575 SQFT APPROX

150'

120'

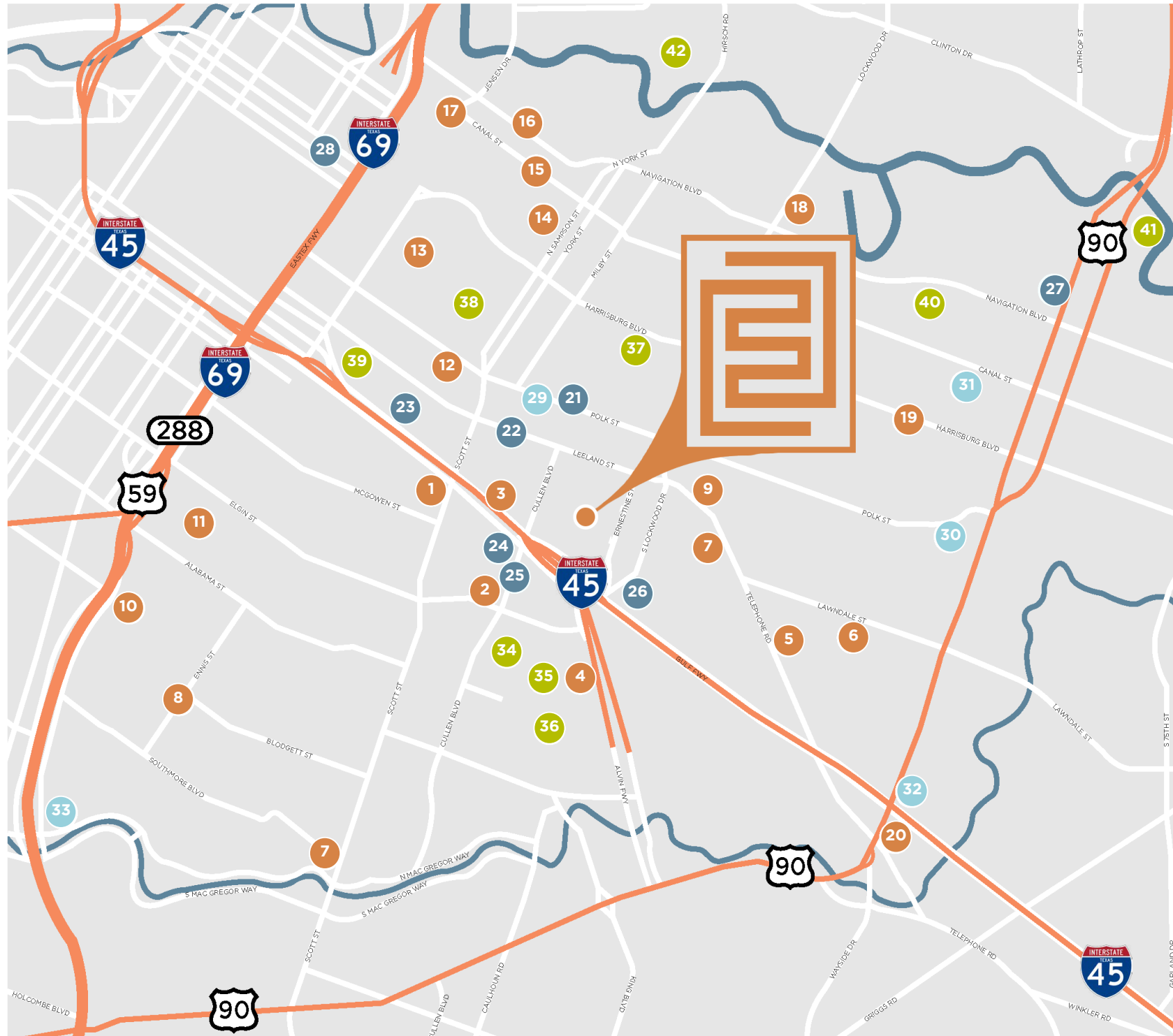
250'

Ernestine St

Ernestine St

Ernestine St

Ernestine St



## RESTAURANT

1. Popeyes Louisiana Kitchen
2. Mcdonalds
3. Starbucks
4. The Nook Café
5. Taqueria Monterrey Chiquito Restaurant
6. Cochinita & Co
7. LA Burgers & Daiquiris
8. The Locker Room
9. Jack in the Box
10. The Savoy
11. The Doshi House
12. EaDough Pastries & Provisions
13. Tiny Champion
14. Champ Burger
15. Moon Tower Inn
16. The Original Ninfa's on Navigation
17. Cidercade Houston
18. Bumpy Pickle
19. Old Town Harrisburg
20. El Bolillo

## RETAIL

21. Cloud 9
22. Sackett Auto Repair
23. Carpet Giant
24. Wholesale Electric Supply Co.
25. Hodges Southwest
26. Delta Tire Service
27. Cox Hardware and Lumber
28. Houston Astros Team Store

## MARKETS

29. Kroger
30. Fiesta
31. Sellers Bros
32. Walmart Supercenter
33. H-E-B

## OTHER

34. Blaffer Art Museum
35. University of Houston Law Center
36. CT Bauer College of Business
37. Harrisburg Art Museum
38. Facet Seven EaDo
39. Be Fit Gym
40. Believe HTX Gym
41. Buffalo Bend Nature Park
42. East River 9



## CONTACT

### JIM FOREMAN

Vice Chairman  
(713) 963 2824  
jim.foreman@cushwake.com

### MICHAEL FOREMAN

Executive Director  
(713) 963 2850  
michael.foreman@cushwake.com

### BROOKE SWERDLOW

Director  
(713) 331 1735  
brooke.swerdlow@cushwake.com

### Iryna Falyk

Senior Transaction Manager  
(713) 260 0226  
iryna.falyk@cushwake.com

### CUSHMAN & WAKEFIELD

1330 Post Oak Blvd., Ste. 2700  
Houston, TX 77056  
(713) 877 1700  
www.cushmanwakefield.com

©2023 Cushman & Wakefield. All rights reserved. The information contained in this communication is strictly confidential. This information has been obtained from sources believed to be reliable but has not been verified. NO WARRANTY OR REPRESENTATION, EXPRESS OR IMPLIED, IS MADE AS TO THE CONDITION OF THE PROPERTY (OR PROPERTIES) REFERENCED HEREIN OR AS TO THE ACCURACY OR COMPLETENESS OF THE INFORMATION CONTAINED HEREIN, AND SAME IS SUBMITTED SUBJECT TO ERRORS, OMISSIONS, CHANGE OF PRICE, RENTAL OR OTHER CONDITIONS, WITHDRAWAL WITHOUT NOTICE, AND TO ANY SPECIAL LISTING CONDITIONS IMPOSED BY THE PROPERTY OWNER(S). ANY PROJECTIONS, OPINIONS OR ESTIMATES ARE SUBJECT TO UNCERTAINTY AND DO NOT SIGNIFY CURRENT OR FUTURE PROPERTY PERFORMANCE.

