



AVAILABLE FOR LEASE

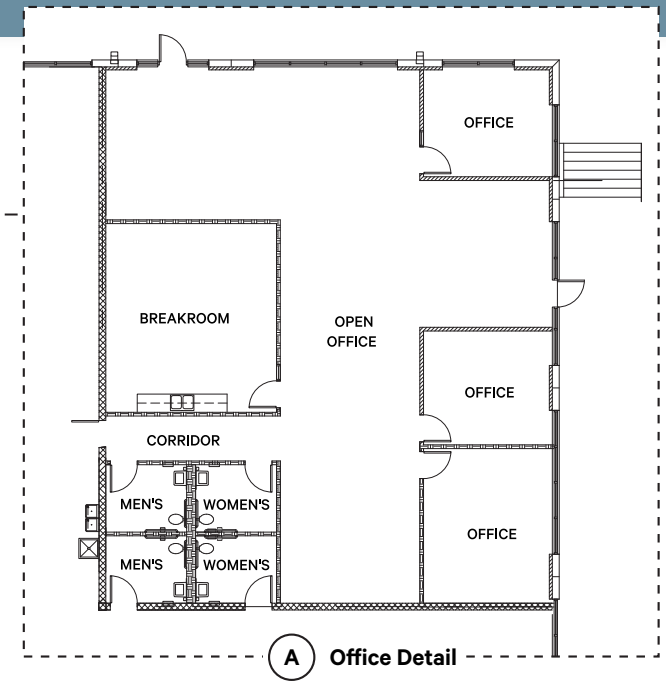
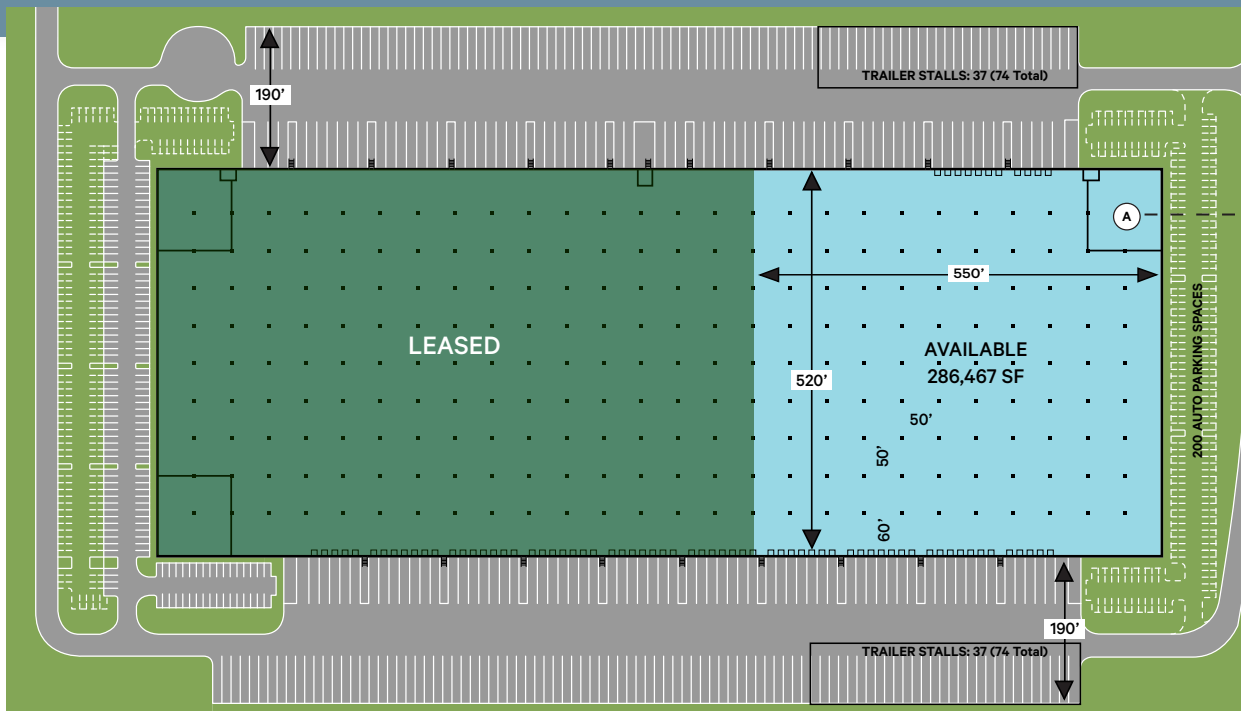
ELIZABETH CREEK GATEWAY

BUILDING D 16000 WOLFF CROSSING FORT WORTH, TEXAS





SITE PLAN & BUILDING SPECS



TOTAL SF: 702,000 SF (520'x1,350')

AVAILABLE SF: 286,467 SF (520'x550')

OFFICE SF: ~2,300 SF

CLEAR HEIGHT: 36'

SPRINKLER: ESFR

TRAILER STALLS: 74

DOCK DOORS: 52 (9'x10')

DRIVE-IN DOORS: 2 (12'x14')

COLUMN SPACING: 50'x 50' (60' STAGING BAYS)

SLAB: 7" CONCRETE, 4,000 PSI

BUILDING DEPTH: 520'

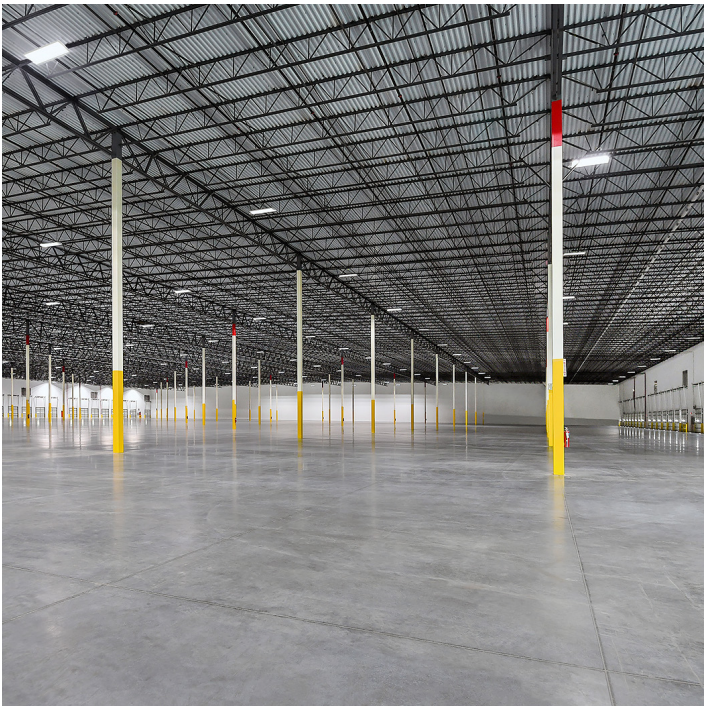
TRUCK COURT: 190'

CAR PARKING: 98 PARKING SPACES
(POTENTIAL FOR 59 ADDITIONAL SPACES)

LIGHTING: LED WAREHOUSE LIGHTS AT 25 FOOT-CANDLES

POWER: 4,000 AMP, 480/277 VOLT, 3-PHASE SERVICE
(UPON VERIFICATION)







ELIZABETH CREEK GATEWAY

contact us

CBRE

STEVE TRESE

Executive Vice President
+1 214 979 6534
steve.trese@cbre.com

J.SCOTT MOORE

First Vice President
+1 817 569 6142
j.scott.moore@cbre.com

LBA Logistics 