

Industrial | For Lease

CBRE

Calaveras Center

308-396 South Abbott Ave

Milpitas, CA 95035
www.cbre.com/siliconvalley

±1,078 SF - ±2,313 SF



Available

320-324 South Abbott Avenue | ±2,156 SF
100% HVAC Office

Available

340-344 South Abbott Avenue | ±2,313 SF
50% Office. 50% Warehouse. 1 Grade Level Door

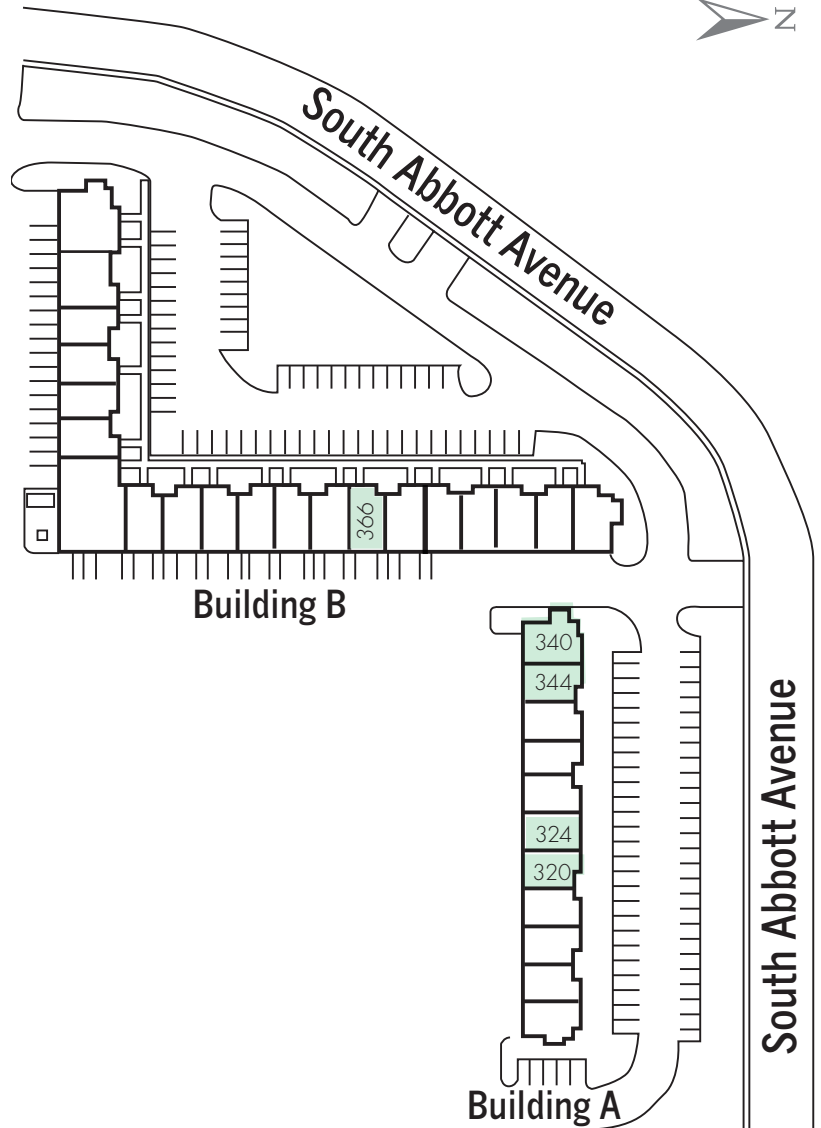
Available

366 South Abbott Avenue | ±1,078 SF
50% Office. 50% Warehouse. 1 Grade Level Door

Available

Site Plan

INTERSTATE 880



NOT TO SCALE

Property Features

- + ±1,078 - ±3,062 SF Available
- + Strategic location at Highway 237 and I-880
- + Easy arterial freeway access

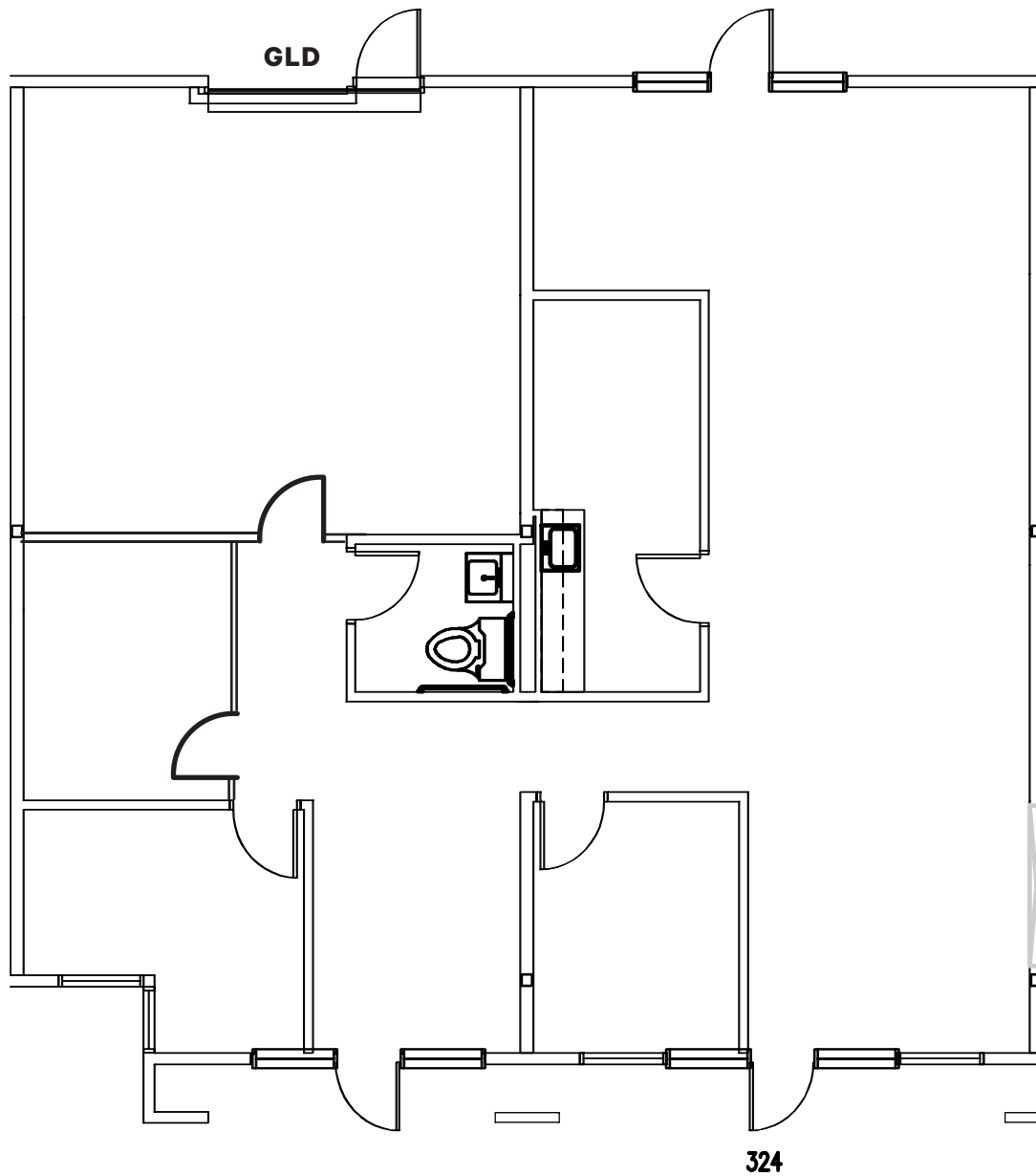
- + Grade-level loading
- + Minutes from numerous restaurants, shopping, hotels, and other amenities
- + Call to tour

Floorplan

320-324 South Abbott Avenue

±2,156 Square Feet

Available



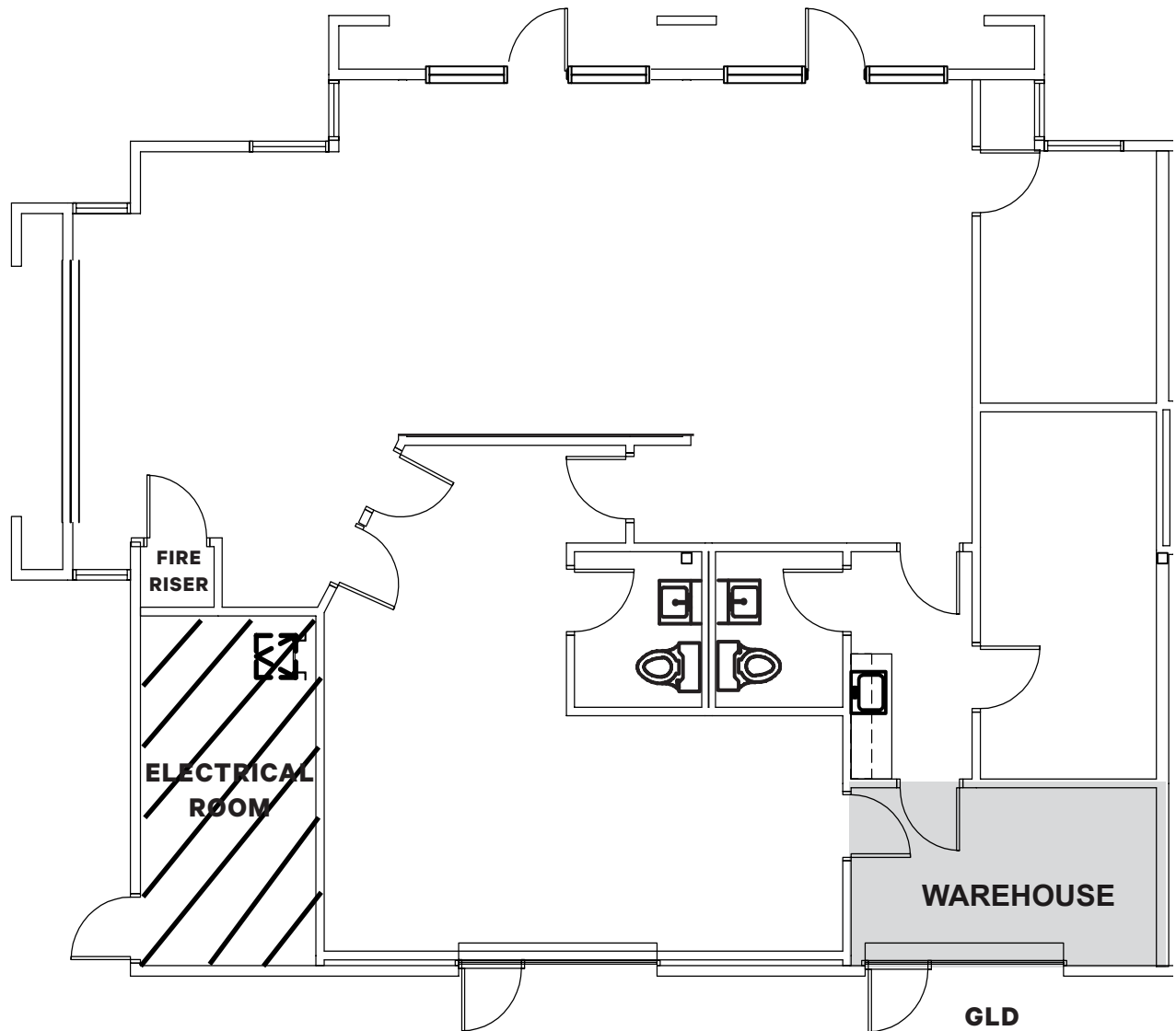
NOT TO SCALE

Floorplan

340-344 South Abbott Avenue

±2,313 Square Feet

Available



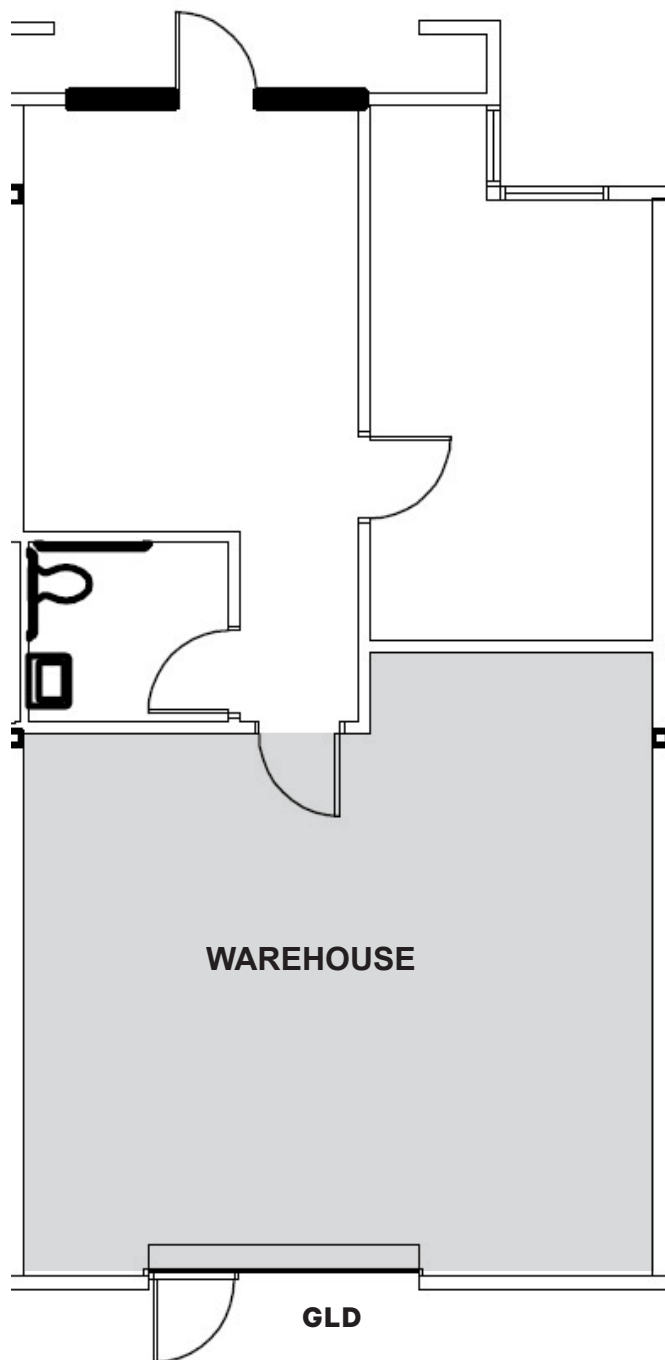
NOT TO SCALE

Floorplan

366 South Abbott Avenue

±1,078 Square Feet

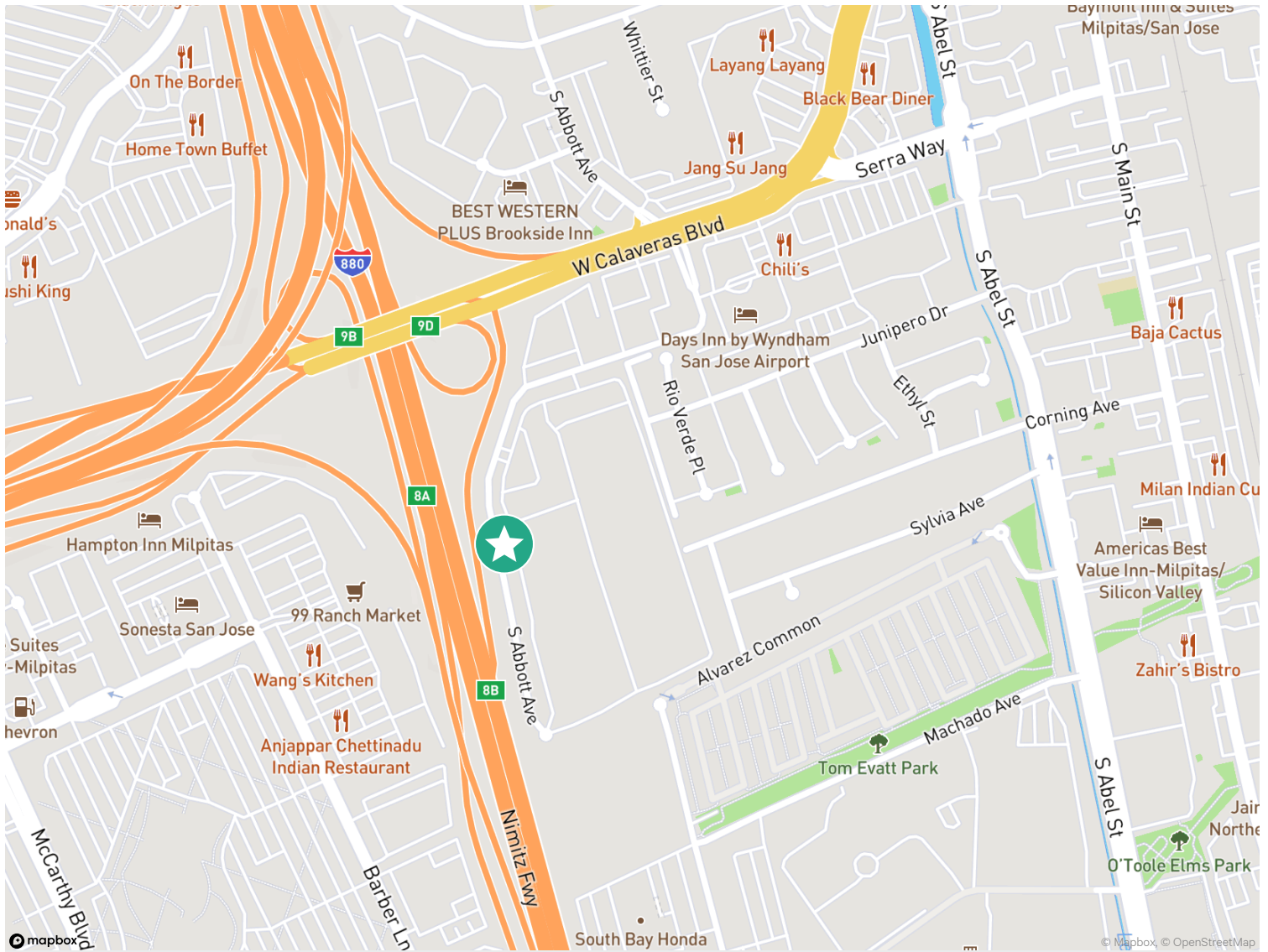
Available



NOT TO SCALE

Calaveras Center, 308-396 South Abbott Ave

Milpitas, CA 95035



Contact Us

Paul Lyles

First Vice President
+1 408 453 7443
paul.lyles@cbre.com
Lic. 01236021

© 2025 CBRE, Inc. All rights reserved. This information has been obtained from sources believed reliable but has not been verified for accuracy or completeness. CBRE, Inc. makes no guarantee, representation or warranty and accepts no responsibility or liability as to the accuracy, completeness, or reliability of the information contained herein. You should conduct a careful, independent investigation of the property and verify all information. Any reliance on this information is solely at your own risk. CBRE and the CBRE logo are service marks of CBRE, Inc. All other marks displayed on this document are the property of their respective owners, and the use of such marks does not imply any affiliation with or endorsement of CBRE. Photos herein are the property of their respective owners. Use of these images without the express written consent of the owner is prohibited.

Calaveras Center

410 - 496
S. ABBOTT AVENUE
MILPITAS



FOR LEASE

±12,666 SF - ±76,913 SF Industrial Buildings

Property Highlights



±12,666 SF - ±76,913 SF
Industrial Buildings



±26' Clear Height



Prominent Freeway
Signage Available



Dock High Doors and
Grade Level Loading



0.45/3,000 SF GPM Sprinklers

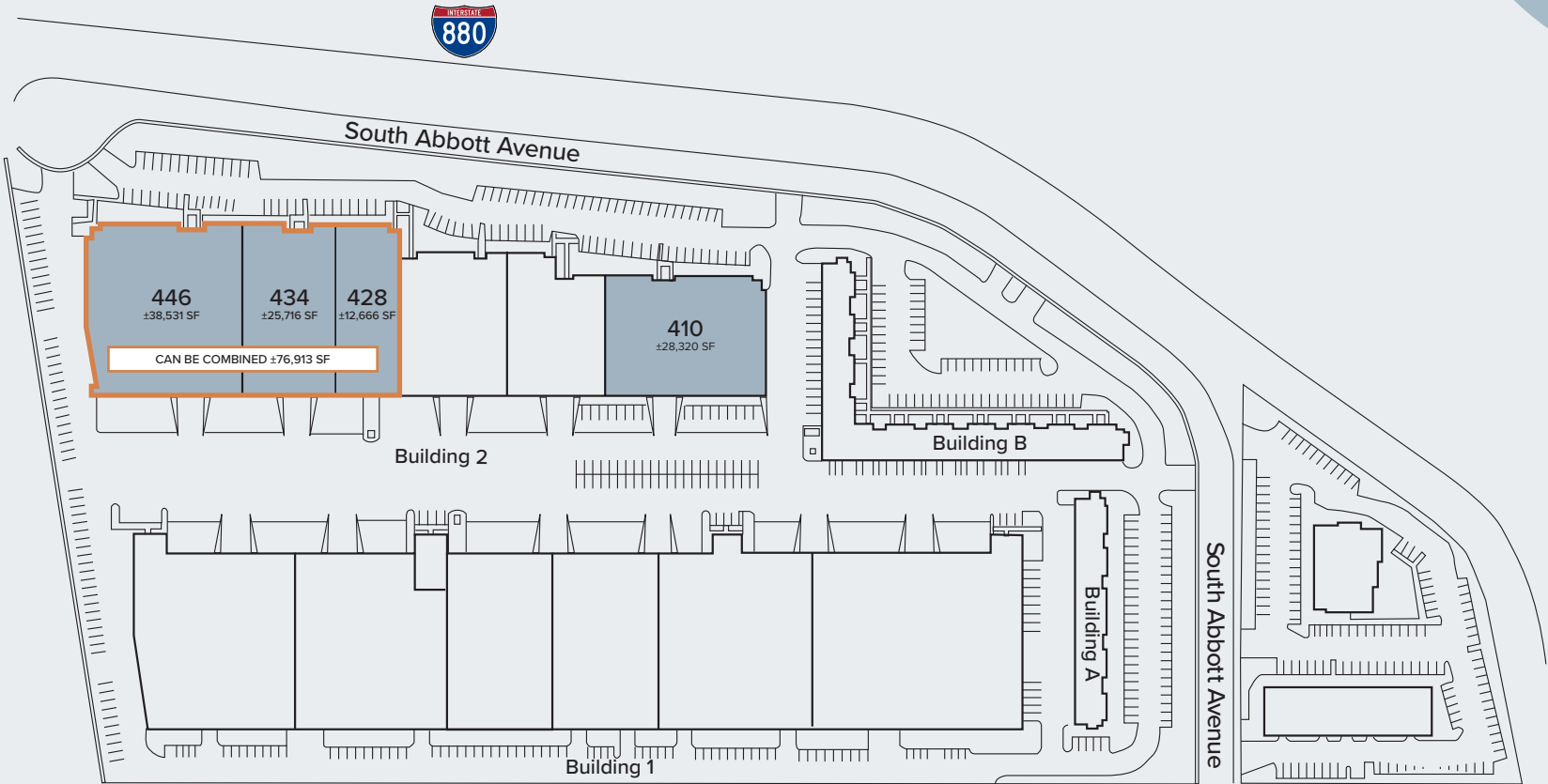


Strategic Location at the Junction
of Highways 237 and 880



Site Plan

NOT TO SCALE



AVAILABLE

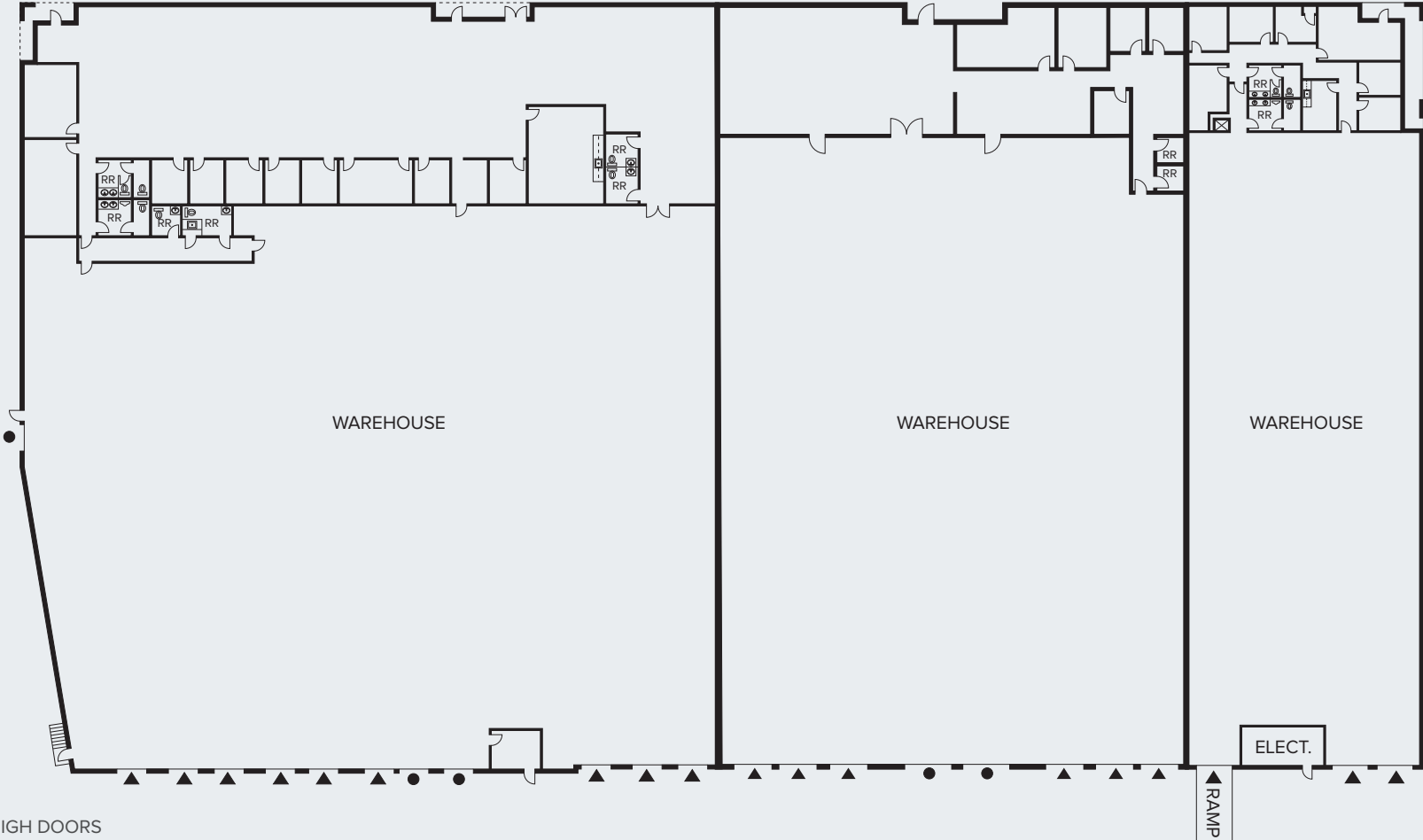
428-446 S. Abbott Ave | Floor Plan

±76,913 SF (DIVISIBLE)

446 S. Abbott Ave
±38,531 SF
9 Dock High Doors
3 Grade Level Doors

434 S. Abbott Ave
±25,716 SF
6 Dock High Doors
2 Grade Level Doors

428 S. Abbott Ave
±12,666 SF
3 Dock High Doors

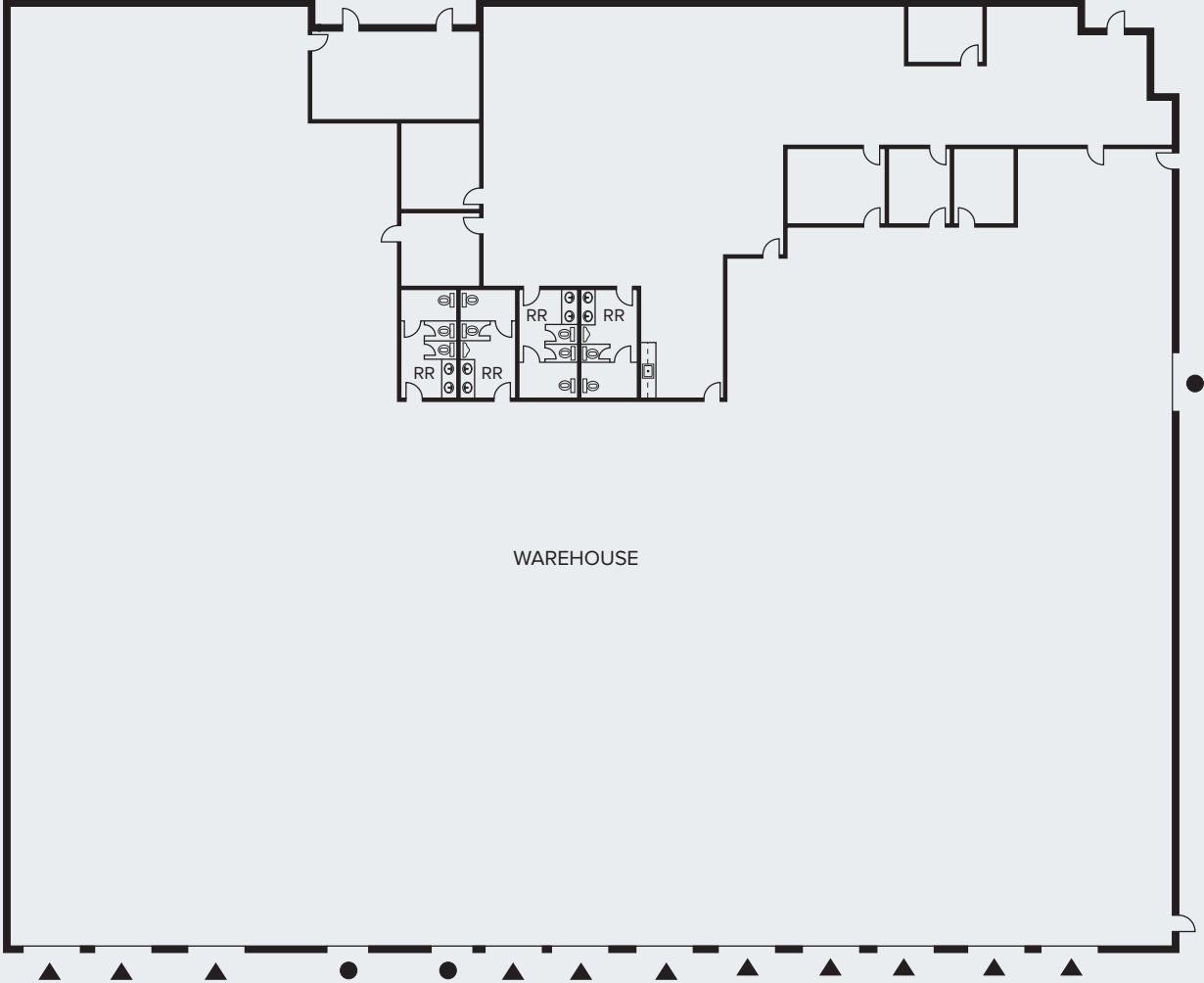


- ▲ DOCK-HIGH DOORS
- GRADE-LEVEL DOORS

NOT TO SCALE

410 S. Abbott Ave | Floor Plan

±28,320 SF



- ▲ DOCK-HIGH DOORS
- GRADE-LEVEL DOORS

NOT TO SCALE

Calaveras Center

410 - 496
S. ABBOTT AVENUE
MILPITAS



Brian Matteoni, SIOR
Executive Vice President
Lic. 00917296
+1 408 453 7407
brian.matteoni@cbre.com

Chip Sutherland
Vice Chairman
Lic. 01014633
+1 408 453 7410
chip.sutherland@cbre.com

LBA Logistics 

CBRE

© 2026 CBRE, Inc. All rights reserved. This information has been obtained from sources believed reliable but has not been verified for accuracy or completeness. CBRE, Inc. makes no guarantee, representation or warranty and accepts no responsibility or liability as to the accuracy, completeness, or reliability of the information contained herein. You should conduct a careful, independent investigation of the property and verify all information. Any reliance on this information is solely at your own risk. CBRE and the CBRE logo are service marks of CBRE, Inc. All other marks displayed on this document are the property of their respective owners, and the use of such marks does not imply any affiliation with or endorsement of CBRE. Photos herein are the property of their respective owners. Use of these images without the express written consent of the owner is prohibited.