

745 ANDOVER

745 ANDOVER PARK EAST • TUKWILA, WA

114,002 SF AVAILABLE



114,002 SF
total available



~10,433 SF 1st floor office
~10,518 SF 2nd floor office



10 dock high doors
2 oversized roll up doors
1 grade level door



22'-24'
clear height



Quick and easy access
to I-5 and I-405



48' x 48' typical
column spacing



Ample
parking



Zoned TUC,
City of Tukwila

MATT MCGREGOR

Vice Chair
+1 206 624 7401
matt.mcgregor@colliers.com

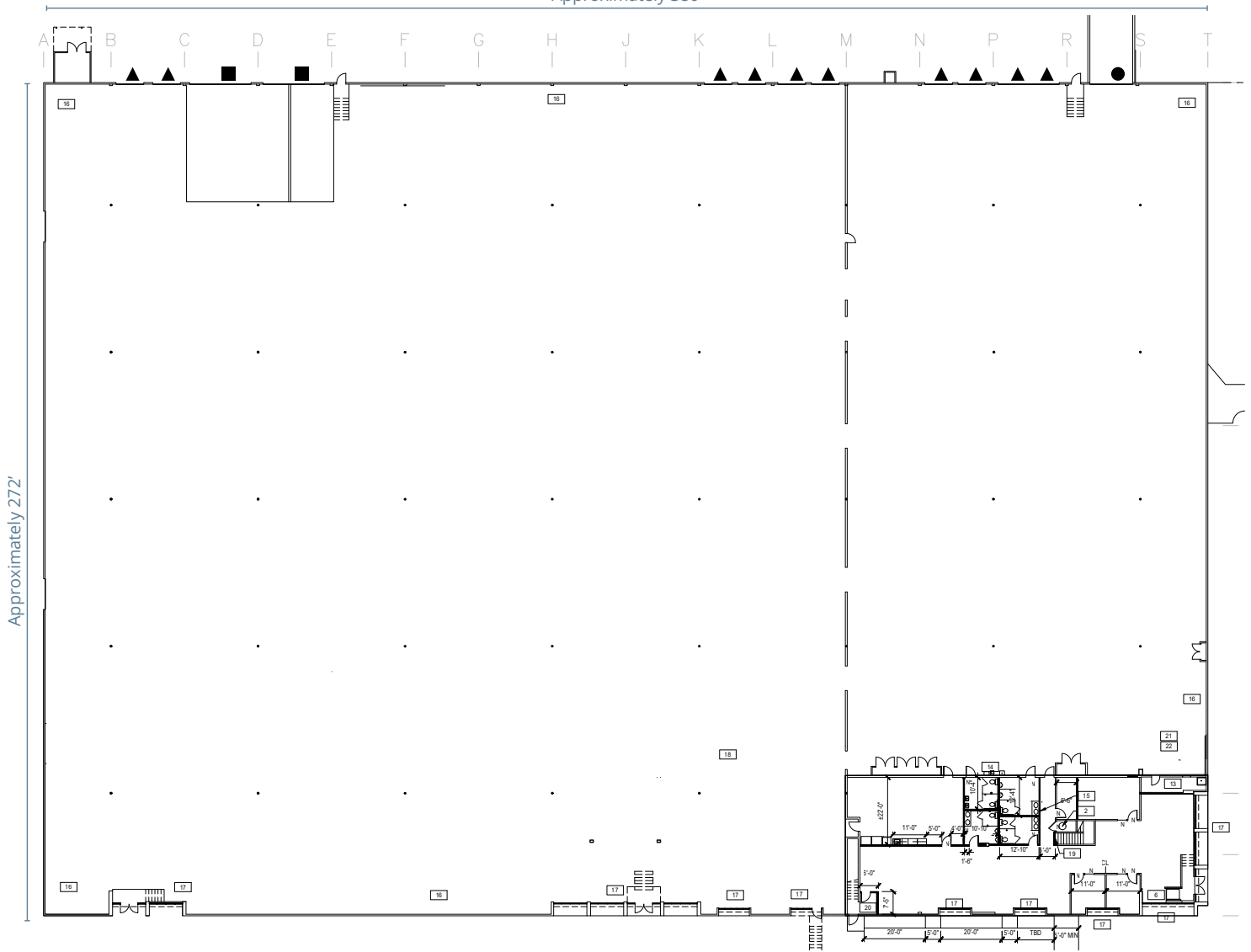
BILL CONDON

Vice Chair
+1 206 235 9732
bill.condon@colliers.com

LBALogistics  **Colliers**

Site Plan

Approximately 380'



Approximately 272'



- ▼ Dock High Door
- Grade Level Door



745 ANDOVER PARK EAST • TUKWILA, WA

MATT MCGREGOR

Vice Chair
+1 206 624 7401
matt.mcgregor@colliers.com

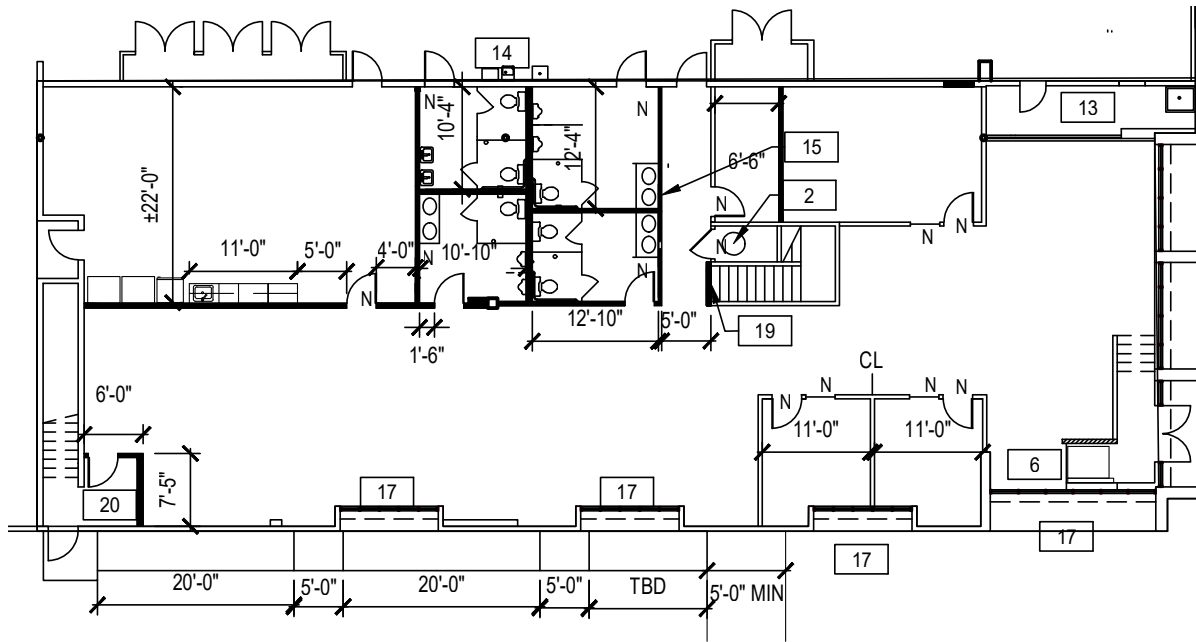
BILL CONDON

Vice Chair
+1 206 235 9732
bill.condon@colliers.com

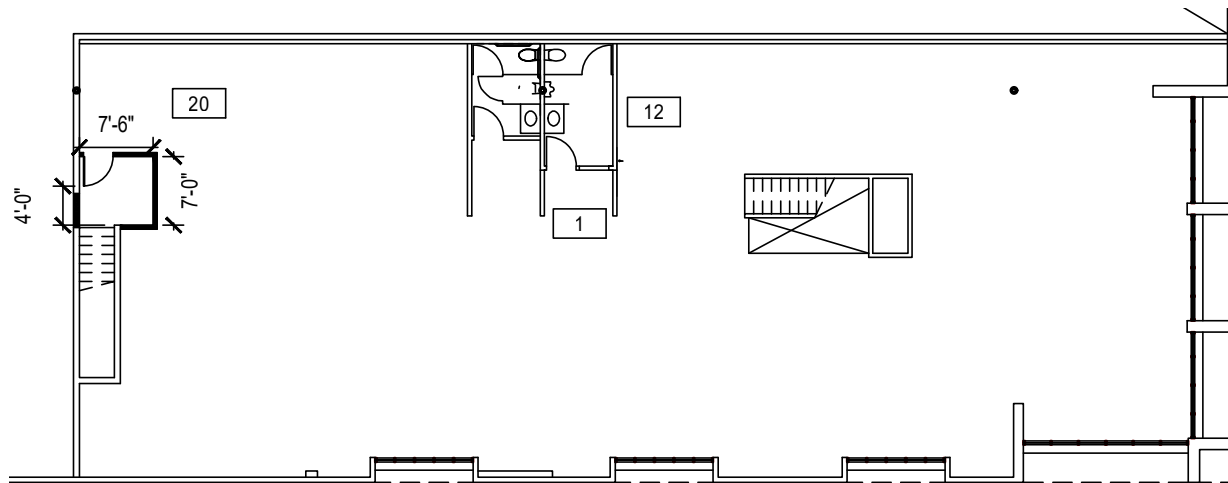
LBA Logistics  Colliers

Site Plan

First Floor Office



Second Floor Office



745 ANDOVER PARK EAST • TUKWILA, WA

MATT MCGREGOR

Vice Chair
+1 206 624 7401
matt.mcgregor@colliers.com

BILL CONDON

Vice Chair
+1 206 235 9732
bill.condon@colliers.com

LBA Logistics  Colliers

Location



745 ANDOVER



745 ANDOVER

745 ANDOVER PARK EAST • TUKWILA, WA

MATT MCGREGOR

Vice Chair
+1 206 624 7401
matt.mcgregor@colliers.com

BILL CONDON

Vice Chair
+1 206 235 9732
bill.condon@colliers.com

LBALogistics  **Colliers**