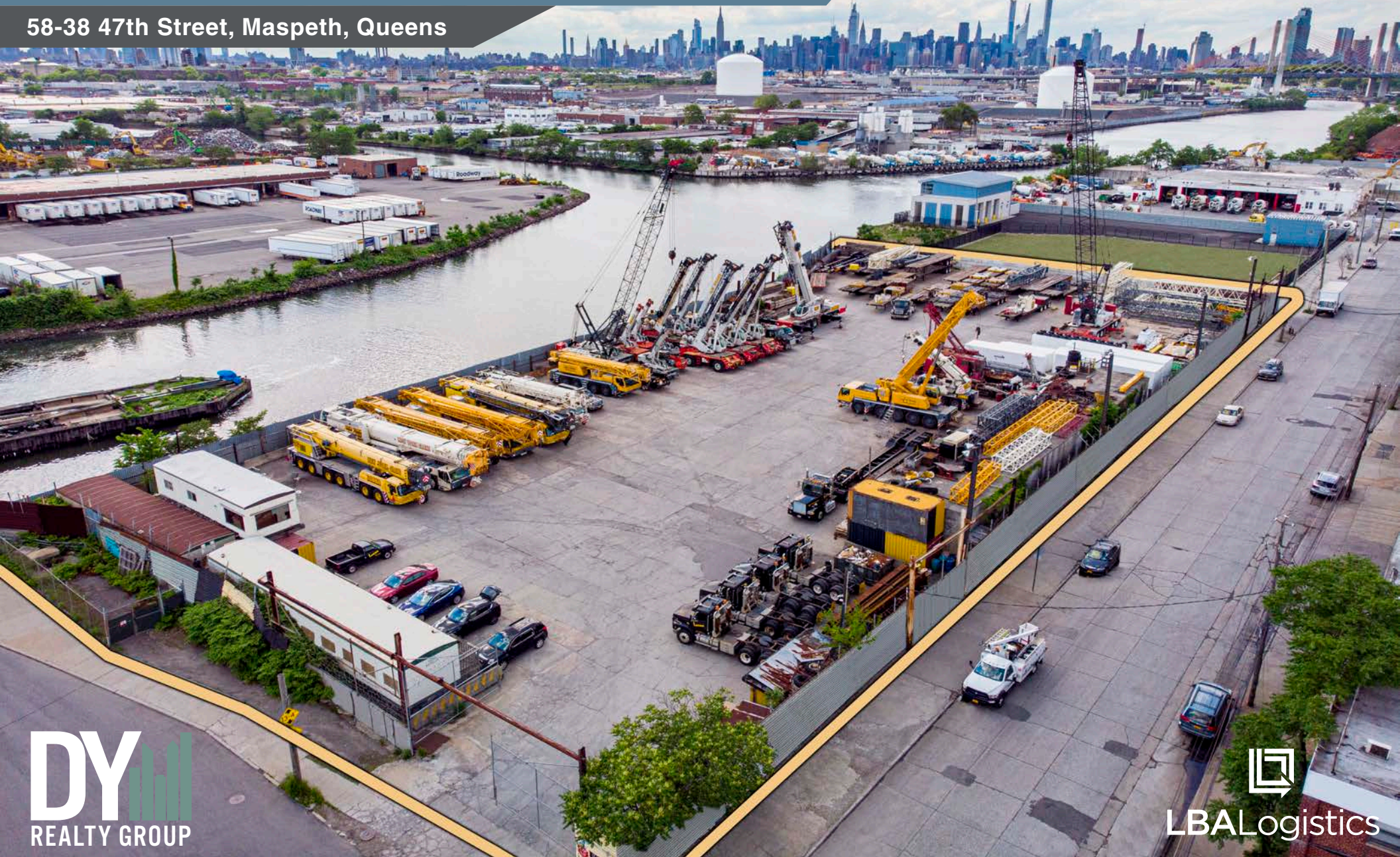


# Maspeth Landing

±2 Acre NYC Parking & Industrial Outdoor Storage

58-38 47th Street, Maspeth, Queens



ALL INFORMATION IS FROM SOURCES DEEMED RELIABLE, BUT SUBJECT TO: ERRORS, CHANGES WITHOUT NOTICE, PRIOR SALE OR LEASE, WITHDRAWAL WITHOUT NOTICE. ALL MEASUREMENTS ARE APPROXIMATE.

36-36 33RD STREET, SUITE 503 • LONG ISLAND CITY, NY 11106 • 718.729.7474 • WWW.DYREALTY.COM

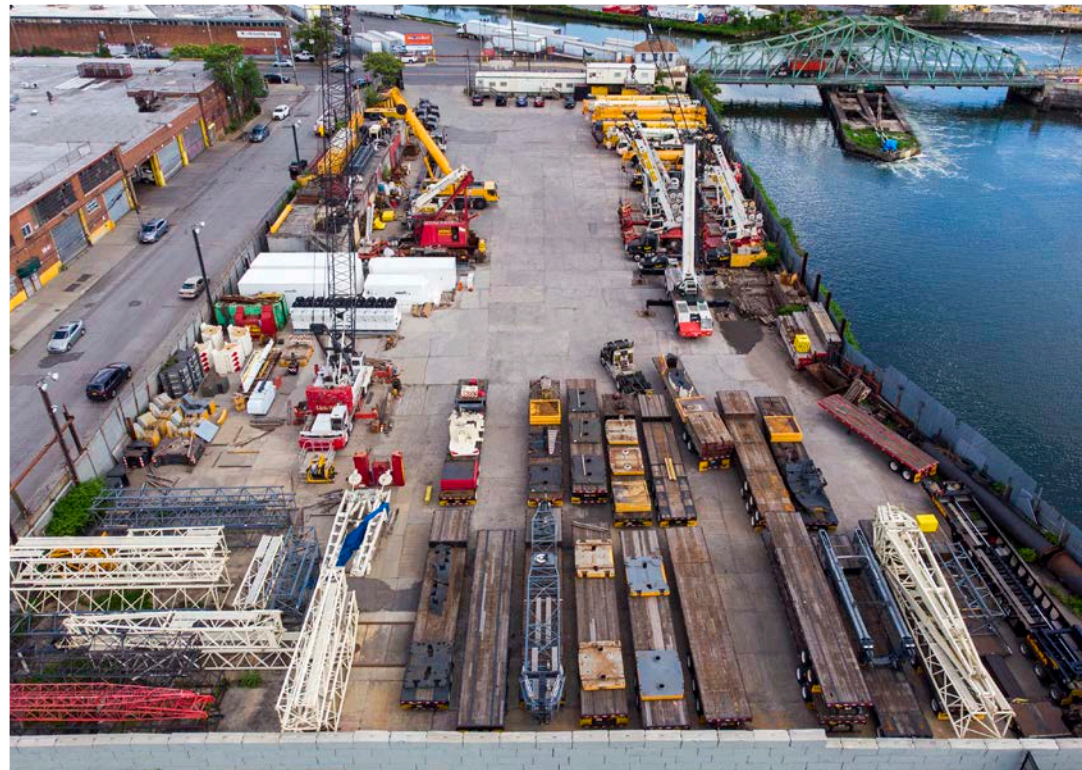
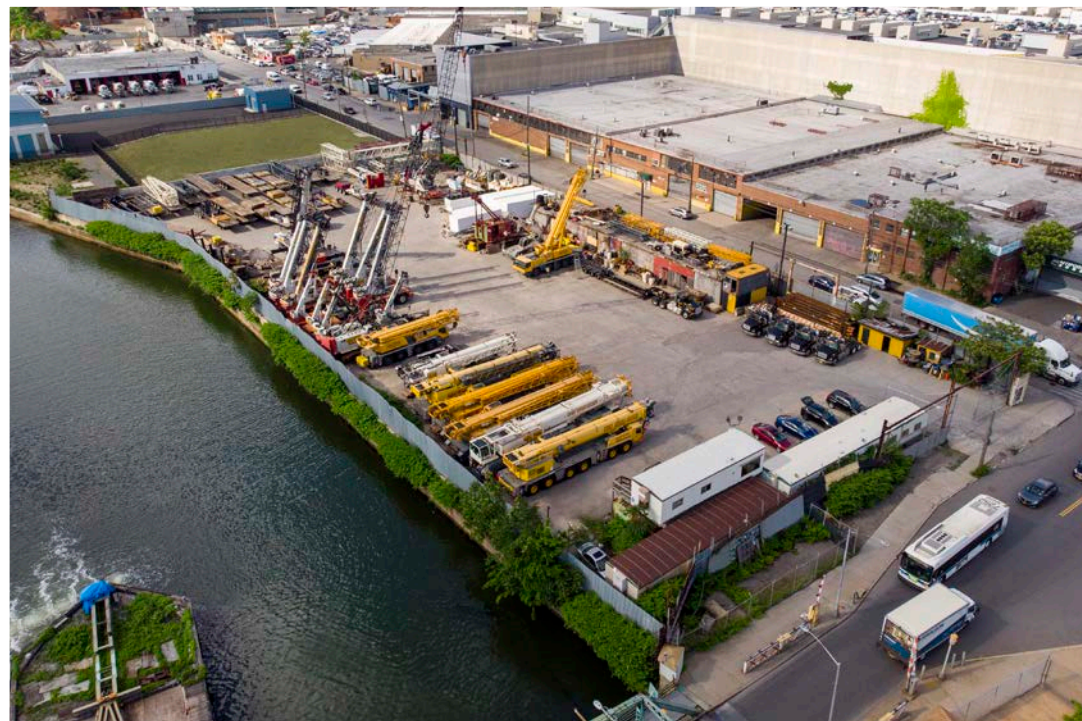
## Property Description

Located in the Maspeth section of Queens on the Brooklyn borderline, this 90,462 SF fenced and paved yard is available for short or long-term lease. The property is ideally located minutes from both the Long Island Expressway and Brooklyn-Queens Expressway. The Q59 bus stops directly outside the site.

The site can be used for car, truck, and trailer parking, as well as outdoor storage and all construction related uses, including heavy industrial uses due to the M3-1 zoning. Divisions of 45,000 SF and greater will be considered.

Contact the Exclusive Agent for more information or to schedule a tour.

<b>Block Lot</b>	2601 / 40
<b>Lot Size</b>	90,462 SF
<b>Divisions</b>	45,000 - 90,462 SF
<b>Zone</b>	M3-1
<b>Conditions</b>	Fenced, Paved, Lit, Electricity, Water, & Sewer
<b>Access</b>	Grand Avenue & 47th Street
<b>Transit</b>	Minutes to LIE, BQE Q59 Bus Stops Outside Site
<b>Lease Price</b>	<b><i>Call or E-mail</i></b>



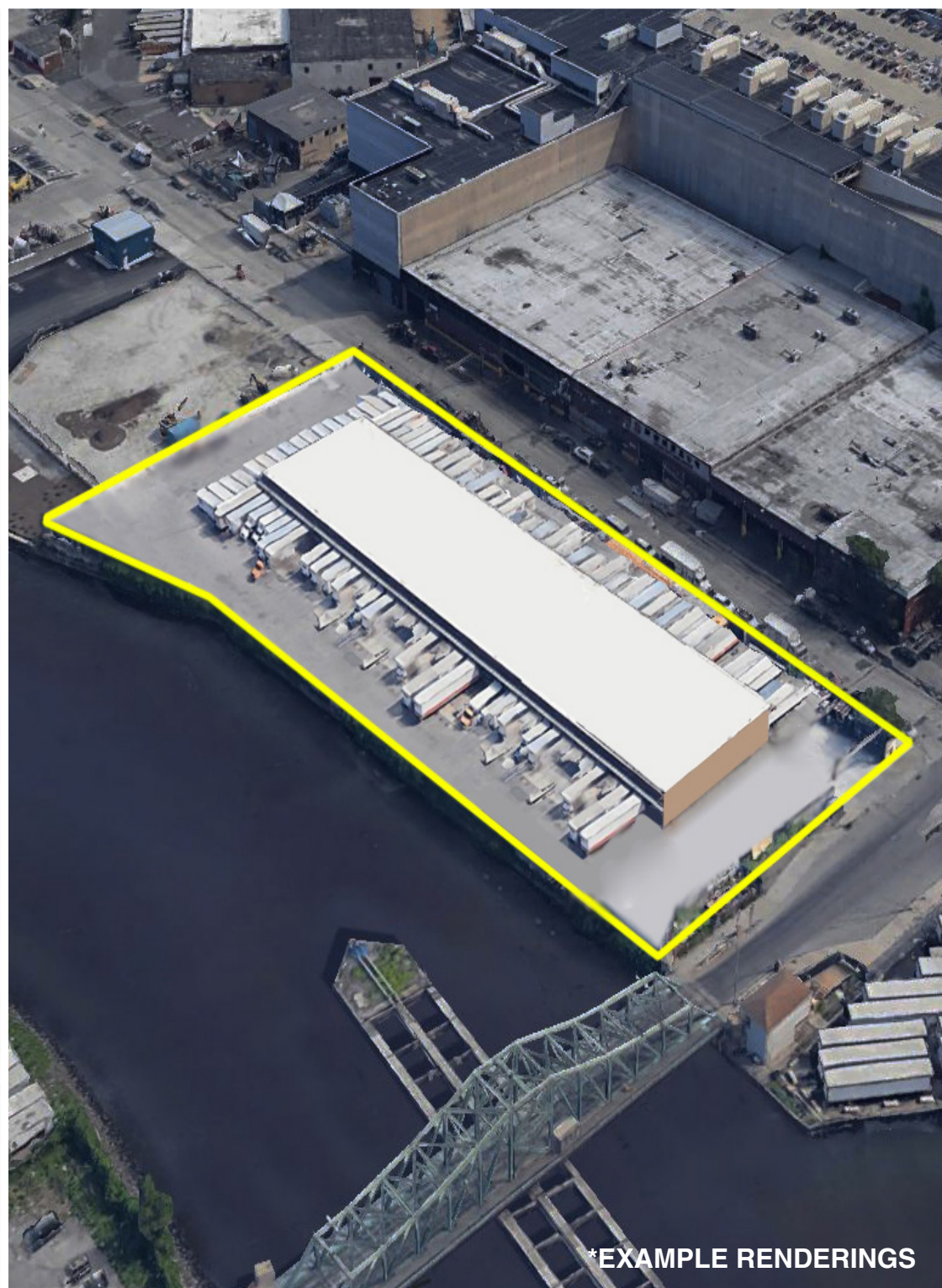
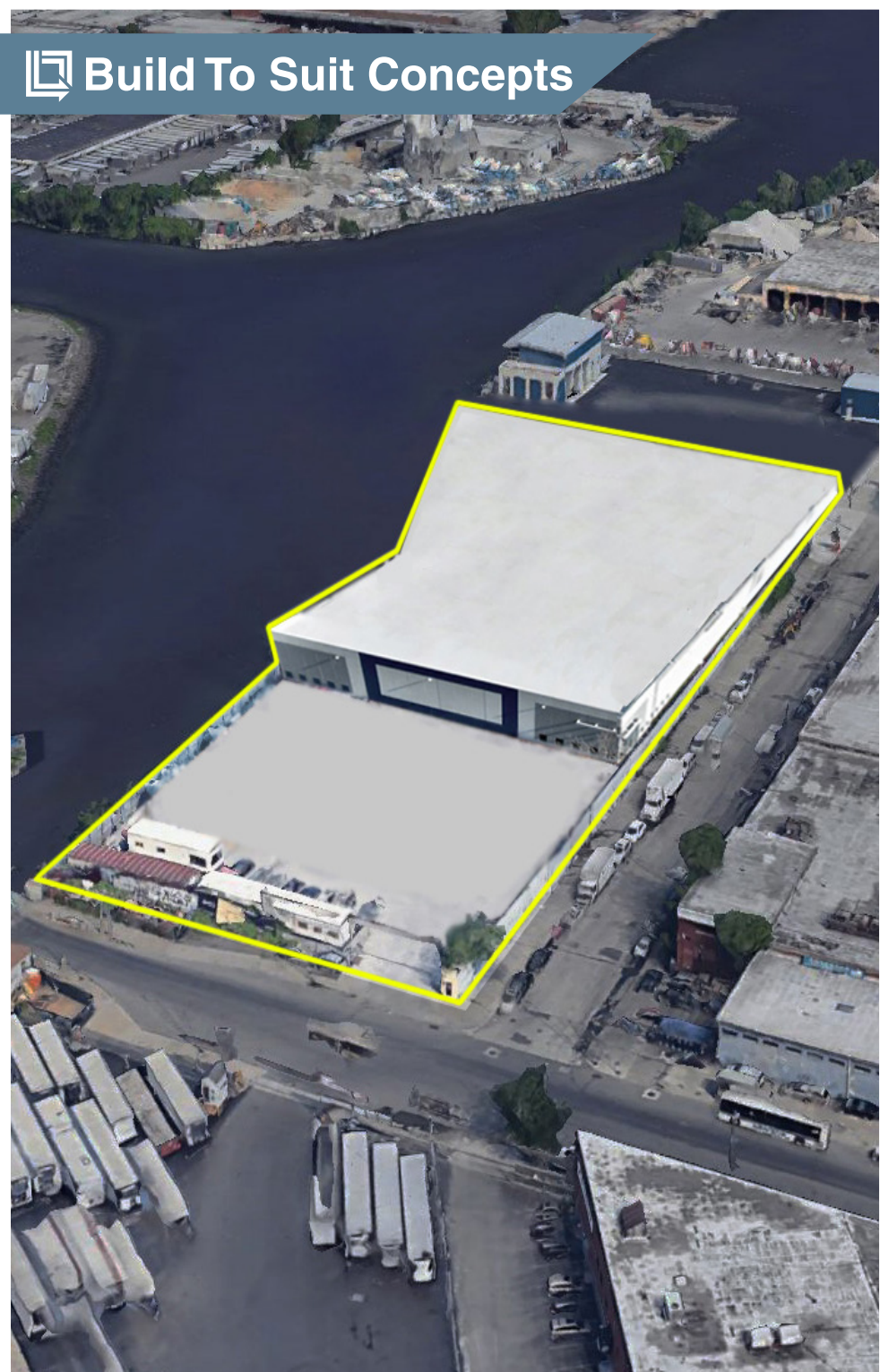
ALL INFORMATION IS FROM SOURCES DEEMED RELIABLE, BUT SUBJECT TO: ERRORS, CHANGES WITHOUT NOTICE, PRIOR SALE OR LEASE, WITHDRAWAL WITHOUT NOTICE. ALL MEASUREMENTS ARE APPROXIMATE.



ALL INFORMATION IS FROM SOURCES DEEMED RELIABLE, BUT SUBJECT TO: ERRORS, CHANGES WITHOUT NOTICE, PRIOR SALE OR LEASE, WITHDRAWAL WITHOUT NOTICE. ALL MEASUREMENTS ARE APPROXIMATE.

36-36 33RD STREET, SUITE 503 • LONG ISLAND CITY, NY 11106 • 718.729.7474 • WWW.DYREALTY.COM

# Build To Suit Concepts



**\*EXAMPLE RENDERINGS**

ALL INFORMATION IS FROM SOURCES DEEMED RELIABLE, BUT SUBJECT TO: ERRORS, CHANGES WITHOUT NOTICE, PRIOR SALE OR LEASE, WITHDRAWAL WITHOUT NOTICE. ALL MEASUREMENTS ARE APPROXIMATE.

36-36 33RD STREET, SUITE 503 • LONG ISLAND CITY, NY 11106 • 718.729.7474 • WWW.DYREALTY.COM

# Location Profile



Travel Distances	
LIE (I-495)	0.8 Miles
BQE (I-278)	1.2 Miles
Midtown NYC	4.5 Miles
LGA Airport	5.5 Miles
JFK Airport	11.2 Miles
Nassau County	14.1 Miles
The Bronx	10.2 Miles

Population	
1 Mile	45,567
3 Miles	963,031
5 Miles	2,839,402

## Unrivaled Access

- Minutes from NYC's primary freight arteries, including I-495 & I-278
- Seamless distribution across the five boroughs, Long Island, and NJ
- Situated in the geographical center of New York City

## Last Mile Capability

- Strong local demographics
- Dense labor pool
- High-demand for fleet parking, IOS, or Industrial Development

ALL INFORMATION IS FROM SOURCES DEEMED RELIABLE, BUT SUBJECT TO: ERRORS, CHANGES WITHOUT NOTICE, PRIOR SALE OR LEASE, WITHDRAWAL WITHOUT NOTICE. ALL MEASUREMENTS ARE APPROXIMATE.

# Maspeth Landing

58-38 47th Street, Maspeth, Queens

**Mathew Diana**

*Exclusive Agent*

718.729.7474 x134

MDiana@DYRealty.com

**Ranee Jaber**

*Exclusive Agent*

718.729.7474 x135

RJaber@DYRealty.com

**Paul J. Yuras**

*Exclusive Agent*

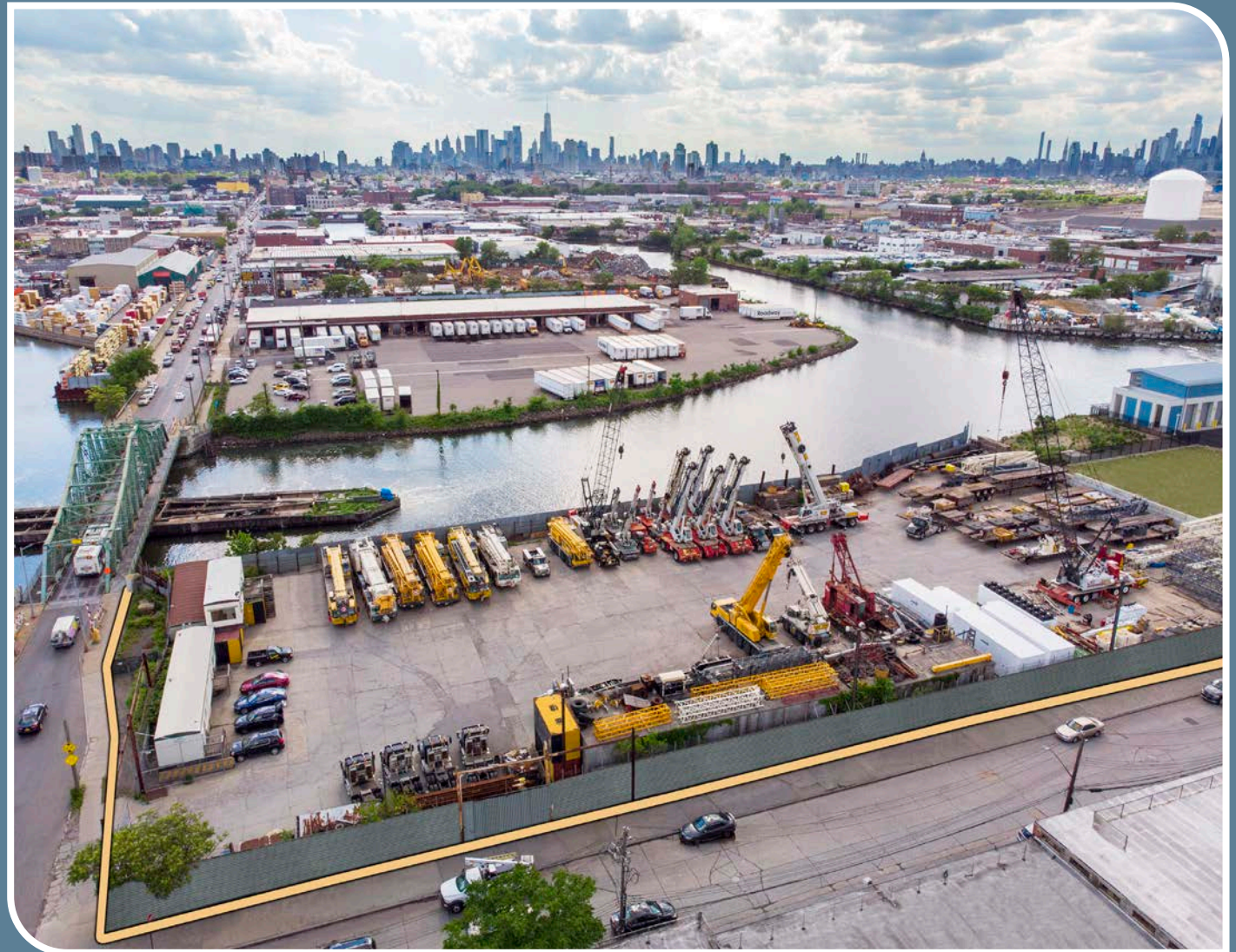
718.729.7474 x113

PYuras@DYRealty.com



LBA Logistics

**DY**  
REALTY GROUP



ALL INFORMATION IS FROM SOURCES DEEMED RELIABLE, BUT SUBJECT TO: ERRORS, CHANGES WITHOUT NOTICE, PRIOR SALE OR LEASE, WITHDRAWAL WITHOUT NOTICE. ALL MEASUREMENTS ARE APPROXIMATE.

36-36 33RD STREET, SUITE 503 • LONG ISLAND CITY, NY 11106 • 718.729.7474 • WWW.DYREALTY.COM