

Dupont Industrial Center

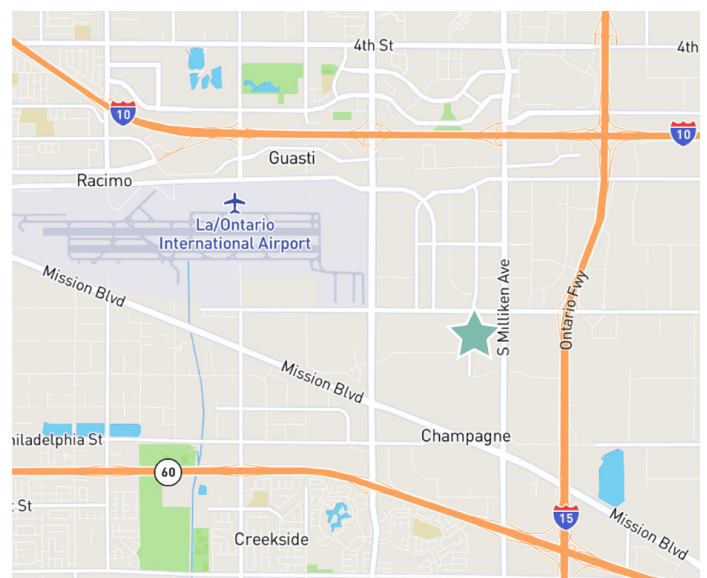
±6,960 SF
AVAILABLE

1505 S Dupont Ave Unit B | Ontario, CA 91761



Property Highlights

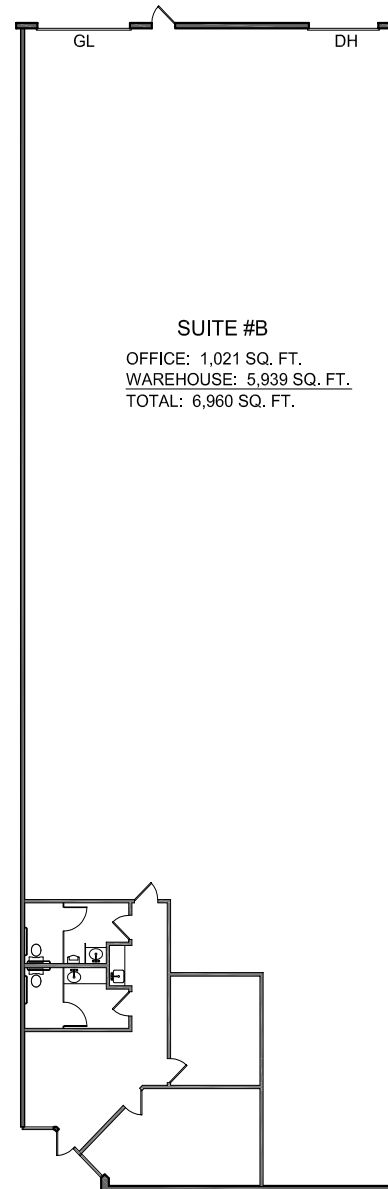
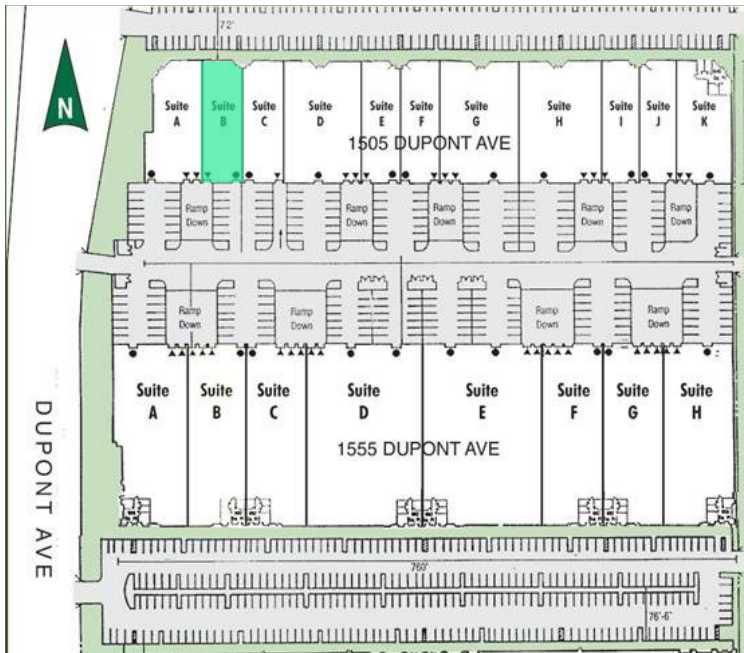
- + ± 6,960 SF Industrial Building
- + ± 1,021 SF of Office Space
- + 20' Minimum Clear Height
- + 0.33 GPM/3,000 SF Sprinkler System
- + 1 Dock High Doors
- + 1 Grade Level Doors
- + 200 Amps, 120/208 volts, 3 phase (Tenant to verify)
- + 48' x 48' Typical Bay Spacing
- + Secured Concrete Truck Court
- + Part of Dupont Industrial Center
- + 188' Reciprocal Trucking Court and Staging Area



±6,960 SF AVAILABLE

1505 S Dupont Ave Unit B | Ontario, CA 91761

For Lease



Contact Us

Len Santoro

Senior Vice President
+1 909 418 2158
len.santoro@cbre.com
Lic. 00758706

Wes Jones

Executive Vice President
+1 909 418 2070
wes.jones@cbre.com
Lic. 01783489

James Toomarian

First Vice President
+1 909 418 2083
james.toomarian@cbre.com
Lic. 02030414

Andrew Chaffee

Associate
+1 909 418 2098
andrew.chaffee@cbre.com
Lic. 02168894

© 2025 CBRE, Inc. All rights reserved. This information has been obtained from sources believed reliable, but has not been verified for accuracy or completeness. You should conduct a careful, independent investigation of the property and verify all information. Any reliance on this information is solely at your own risk. CBRE and the CBRE logo are service marks of CBRE, Inc. All other marks displayed on this document are the property of their respective owners, and the use of such logos does not imply any affiliation with or endorsement of CBRE. Photos herein are the property of their respective owners. Use of these images without the express written consent of the owner is prohibited.

Dupont Industrial Center

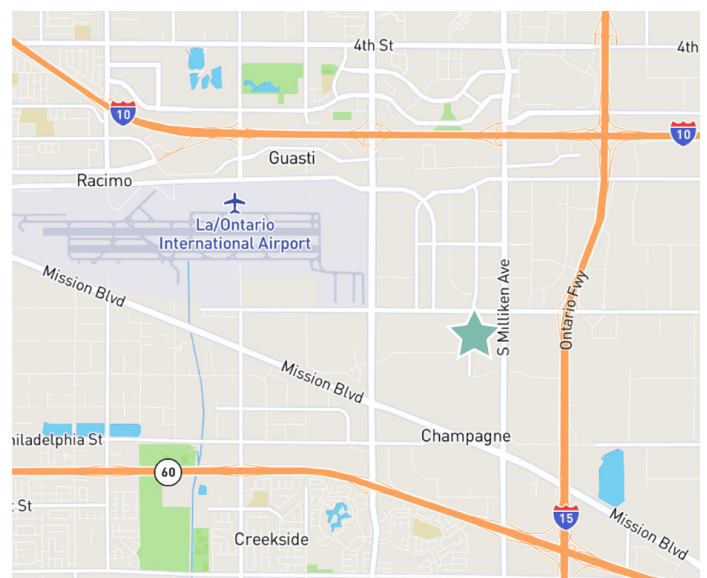
±6,960 SF
AVAILABLE

1505 S Dupont Ave Unit C | Ontario, CA 91761



Property Highlights

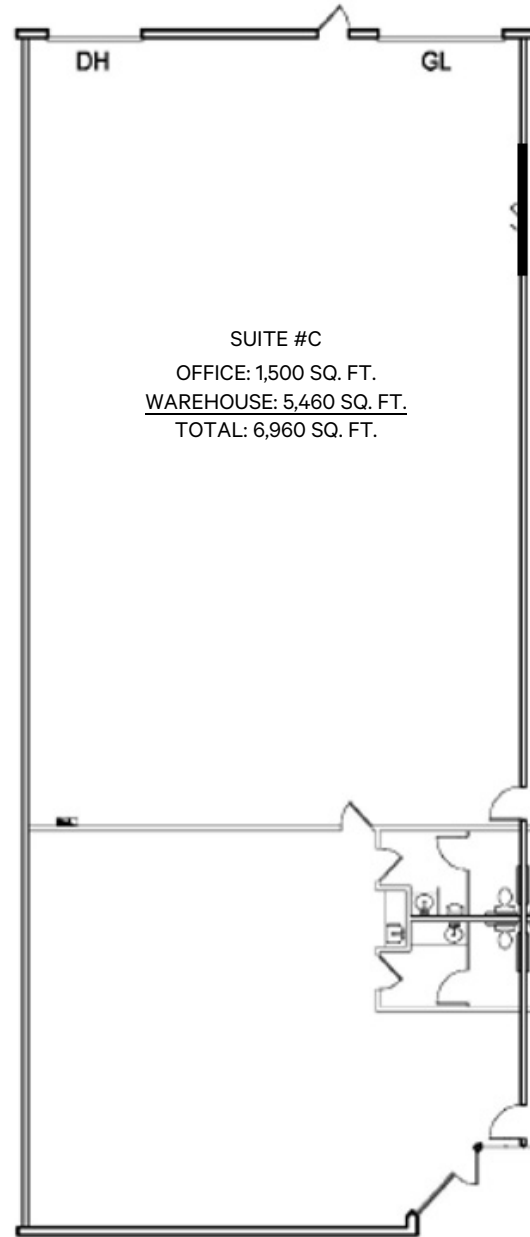
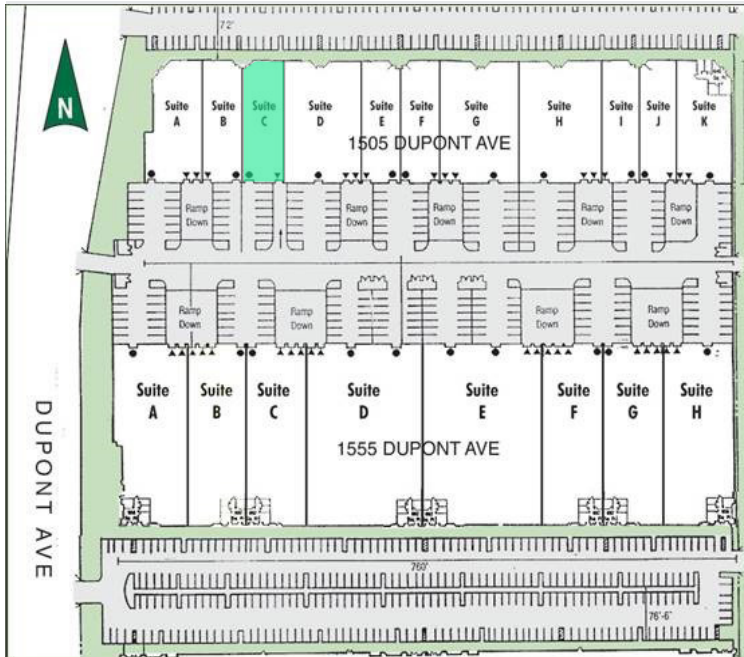
- + ± 6,960 SF Industrial Building
- + ± 1,500 SF of Office Space
- + 20' Minimum Clear Height
- + 0.33 GPM/3,000 SF Sprinkler System
- + 1 Dock High Doors
- + 1 Grade Level Doors
- + 200 Amps, 120/208 volts, 3 phase (Tenant to verify)
- + 48' x 48' Typical Bay Spacing
- + Secured Concrete Truck Court
- + Part of Dupont Industrial Center
- + 188' Reciprocal Trucking Court and Staging Area



±6,960 SF AVAILABLE

1505 S Dupont Ave Unit C | Ontario, CA 91761

For Lease



SUITE #C
OFFICE: 1,500 SQ. FT.
WAREHOUSE: 5,460 SQ. FT.
TOTAL: 6,960 SQ. FT.

Contact Us

Len Santoro

Senior Vice President
+1 909 418 2158
len.santoro@cbre.com
Lic. 00758706

Wes Jones

Executive Vice President
+1 909 418 2070
wes.jones@cbre.com
Lic. 01783489

James Toomarian

First Vice President
+1 909 418 2083
james.toomarian@cbre.com
Lic. 02030414

Andrew Chaffee

Associate
+1 909 418 2098
andrew.chaffee@cbre.com
Lic. 02168894

© 2025 CBRE, Inc. All rights reserved. This information has been obtained from sources believed reliable, but has not been verified for accuracy or completeness. You should conduct a careful, independent investigation of the property and verify all information. Any reliance on this information is solely at your own risk. CBRE and the CBRE logo are service marks of CBRE, Inc. All other marks displayed on this document are the property of their respective owners, and the use of such logos does not imply any affiliation with or endorsement of CBRE. Photos herein are the property of their respective owners. Use of these images without the express written consent of the owner is prohibited.

Dupont Industrial Center

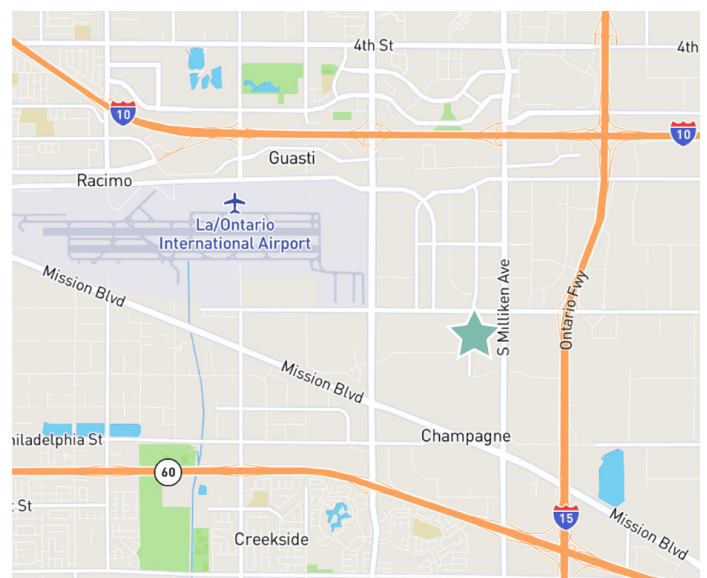
±15,696 SF
AVAILABLE

1555 S Dupont Ave Unit B | Ontario, CA 91761



Property Highlights

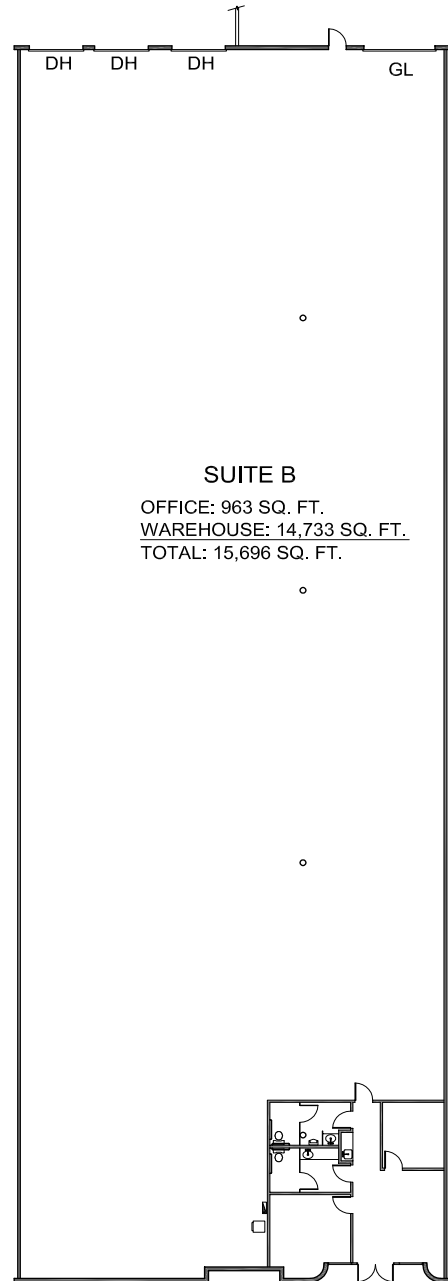
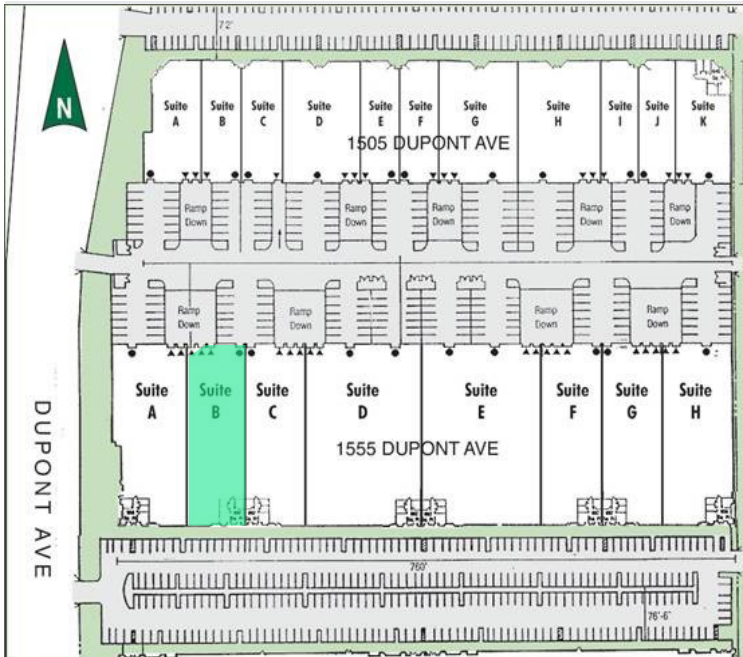
- + ± 15,696 SF Industrial Building
- + ± 963 SF of Office Space
- + 24' Minimum Clear Height
- + 0.45 GPM/3,000 SF Sprinkler System
- + 3 Dock High Doors
- + 1 Grade Level Door
- + 200 Amps, 277/480 volts, 3 phase (Tenant to verify)
- + 48' x 48' Typical Bay Spacing
- + Secured Concrete Truck Court
- + Part of Dupont Industrial Center - Located in FTZ 50-1
- + 188' Reciprocal Trucking Court and Staging Area



±15,696 SF AVAILABLE

1555 S Dupont Ave Unit B | Ontario, CA 91761

For Lease



Contact Us

Len Santoro

Senior Vice President
+1 909 418 2158
len.santoro@cbre.com
Lic. 00758706

Wes Jones

Executive Vice President
+1 909 418 2070
wes.jones@cbre.com
Lic. 01783489

James Toomarian

First Vice President
+1 909 418 2083
james.toomarian@cbre.com
Lic. 02030414

Andrew Chaffee

Associate
+1 909 418 2098
andrew.chaffee@cbre.com
Lic. 02168894

© 2025 CBRE, Inc. All rights reserved. This information has been obtained from sources believed reliable, but has not been verified for accuracy or completeness. You should conduct a careful, independent investigation of the property and verify all information. Any reliance on this information is solely at your own risk. CBRE and the CBRE logo are service marks of CBRE, Inc. All other marks displayed on this document are the property of their respective owners, and the use of such logos does not imply any affiliation with or endorsement of CBRE. Photos herein are the property of their respective owners. Use of these images without the express written consent of the owner is prohibited.