



AVAILABLE

67,019 SF
Free-Standing
Food Processing
Building on
3.97 Acres

**12805-12809
Busch Place**

SANTA FE SPRINGS, CA

12805-12809 Busch Place

Property Highlights



67,019 SF

Building Size



4,000 Amps, 227/480 Volt

Power

Upon tenant verification



3.97 Acres

Property Size



6

Dock High Doors



7,044 SF

Office



2

Ground Level Loading Doors



3,303 SF

Mezzanine

(Lunch Room)



22'-24'

Clear Height



2

Private Fenced &
Secured Yards



Calculated
Sprinkler System

Food Improvements

Freezer - 7,845 SF

Blast Freezer (-10) - 3,356 SF

Ice Cream - 4,596 SF

Cooler - 1,869 SF

Process Cooler - 1,250 SF

Bakery - 3,213 SF

Pan Wash - 1,045 SF

Pan Storage - 2,262 SF

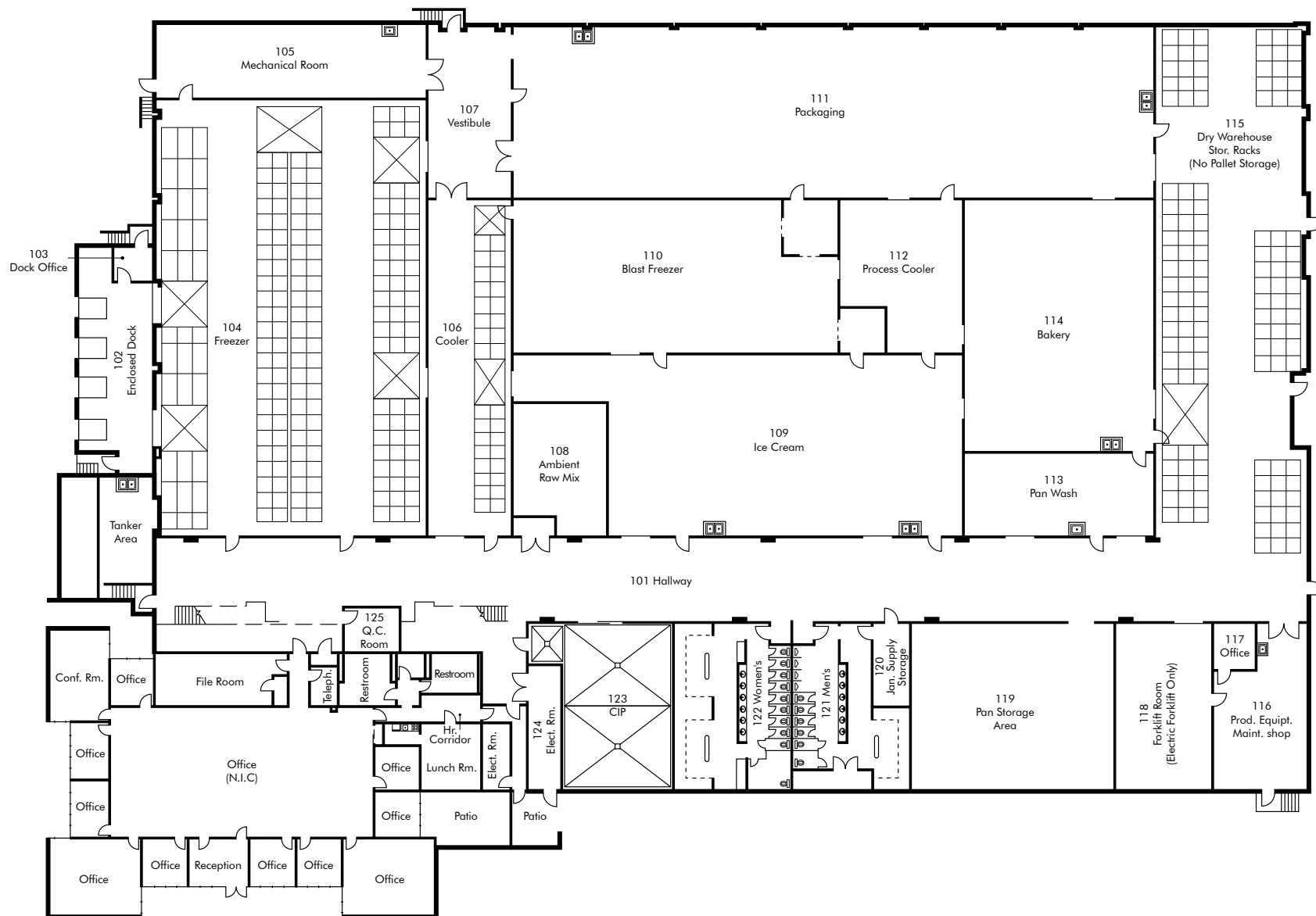
Packaging - 7,400 SF

Floor Drains

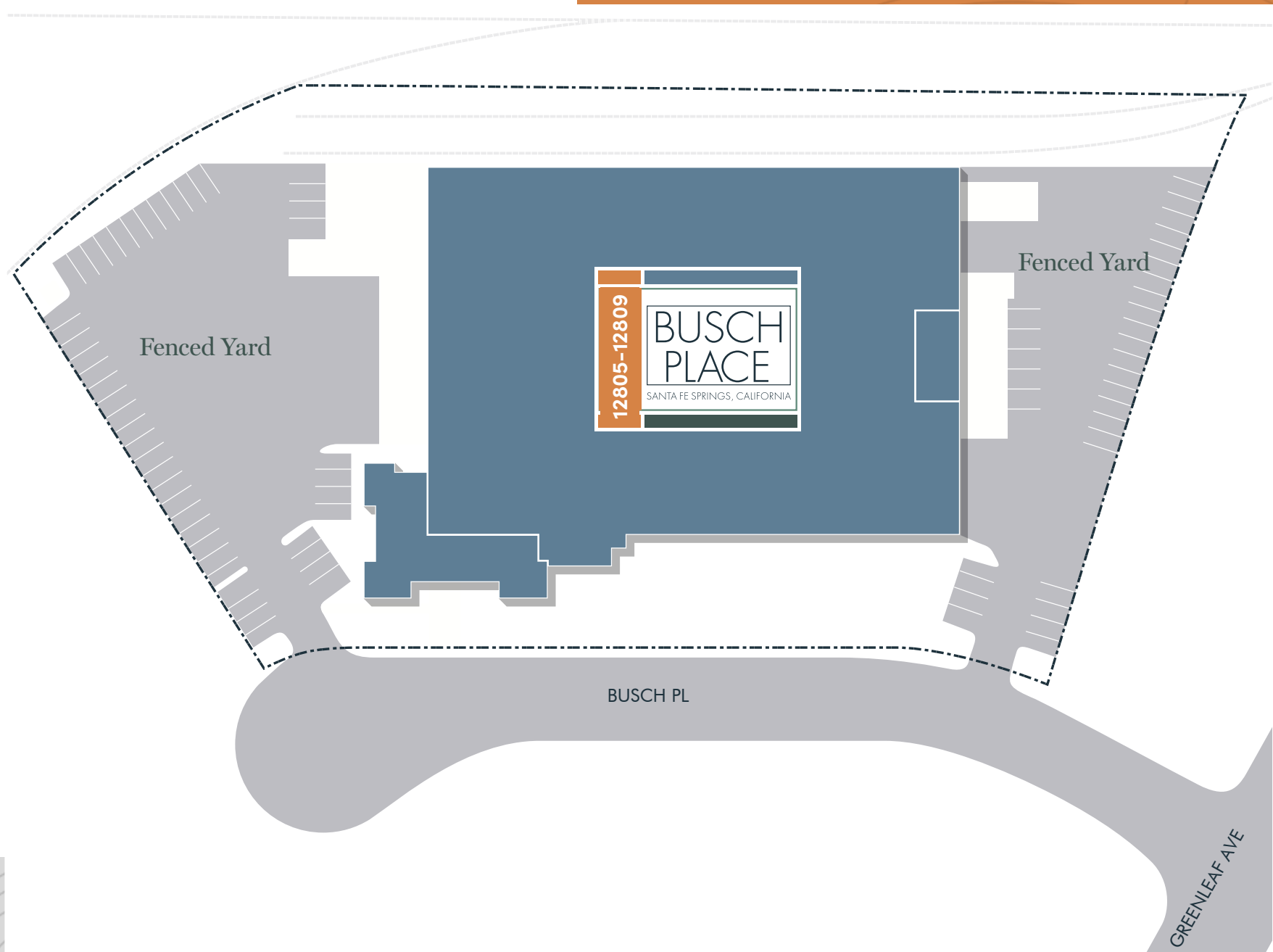


12805-12809 Busch Place

Floor Plan



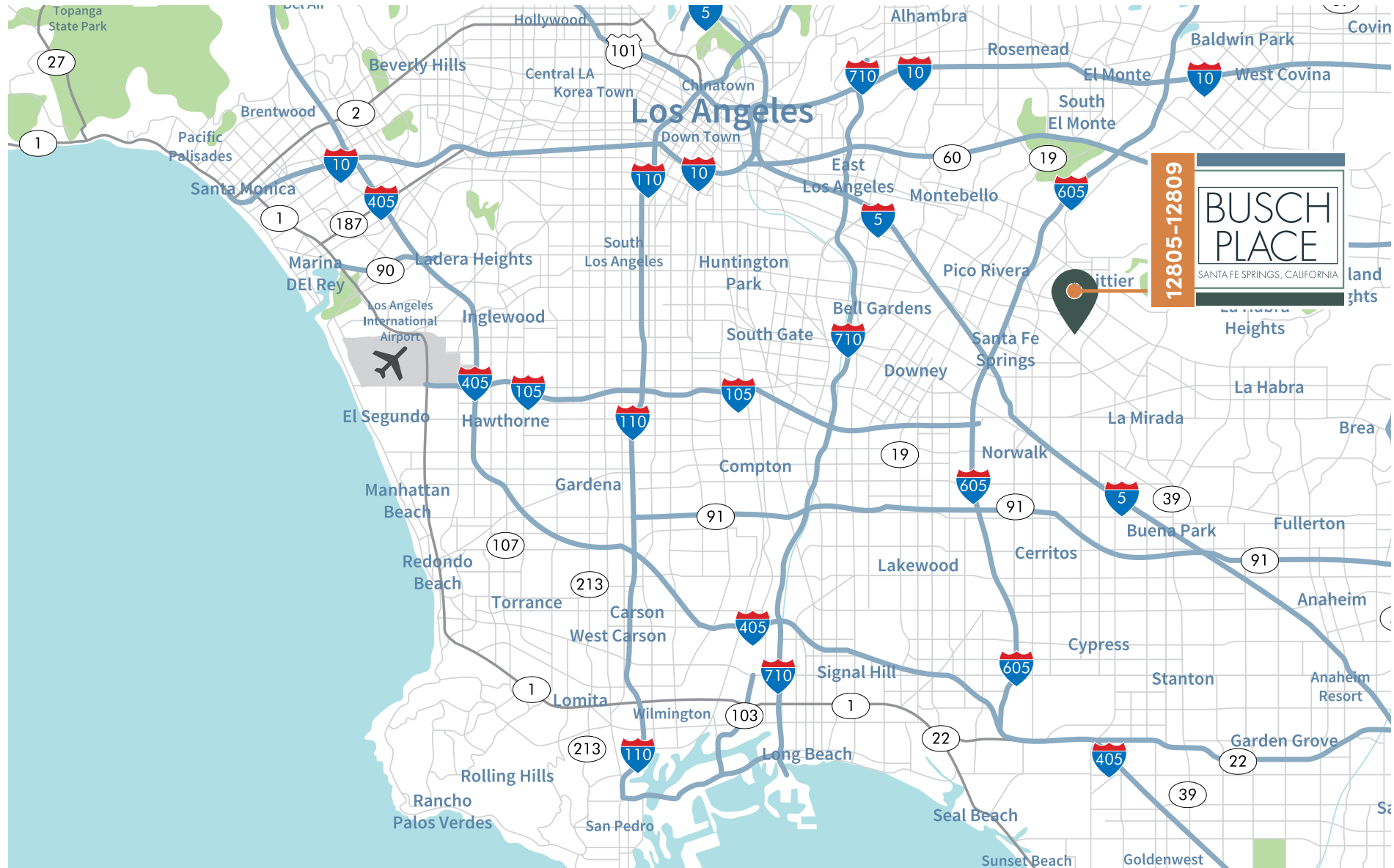
Site Plan



12805-12809 Busch Place

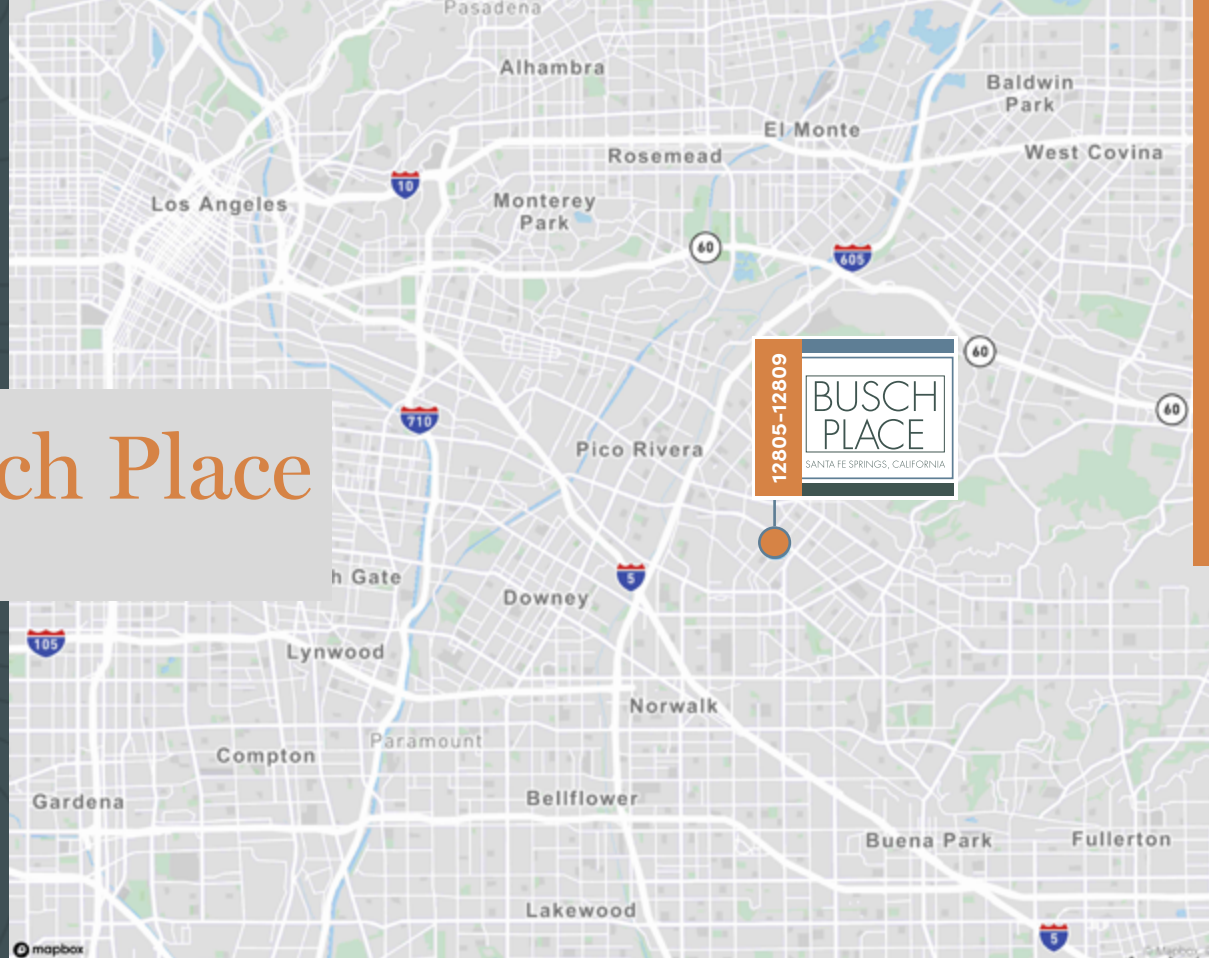


Locator Map



12805-12809 Busch Place

SANTA FE SPRINGS, CA



CONTACTS

RICK MCGEAGH

+1 310 363 4878

rick.mcgeagh@cbre.com

Lic. 00912627

JOSH BONWELL

+1 714 371 9207

josh.bonwell@cbre.com

Lic. 01324803

TRENT PETERSON

+1 714 371 9341

trent.peterson@cbre.com

Lic. 01986333

ART RASMUSSEN

+1 310 550 2564

arts.rasmussen@cbre.com

Lic. 00918691

© 2025 CBRE, Inc. All rights reserved. This information has been obtained from sources believed reliable but has not been verified for accuracy or completeness. CBRE, Inc. makes no guarantee, representation or warranty and accepts no responsibility or liability as to the accuracy, completeness, or reliability of the information contained herein. You should conduct a careful, independent investigation of the property and verify all information. Any reliance on this information is solely at your own risk. CBRE and the CBRE logo are service marks of CBRE, Inc. All other marks displayed on this document are the property of their respective owners, and the use of such marks does not imply any affiliation with or endorsement of CBRE. Photos herein are the property of their respective owners. Use of these images without the express written consent of the owner is prohibited.

LBALogistics 

CBRE